

Obstetrics/Gynecology

Chart 1 - New Patient Office Visits (all claims)

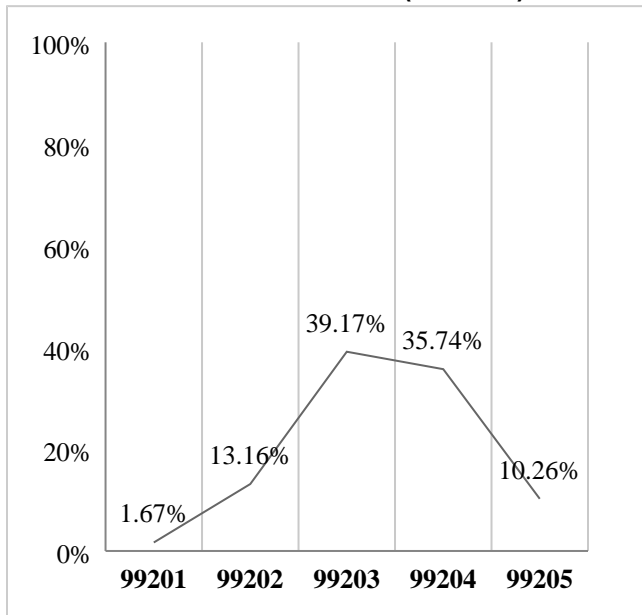


Chart 2 - Established Patient Office Visits (all claims)

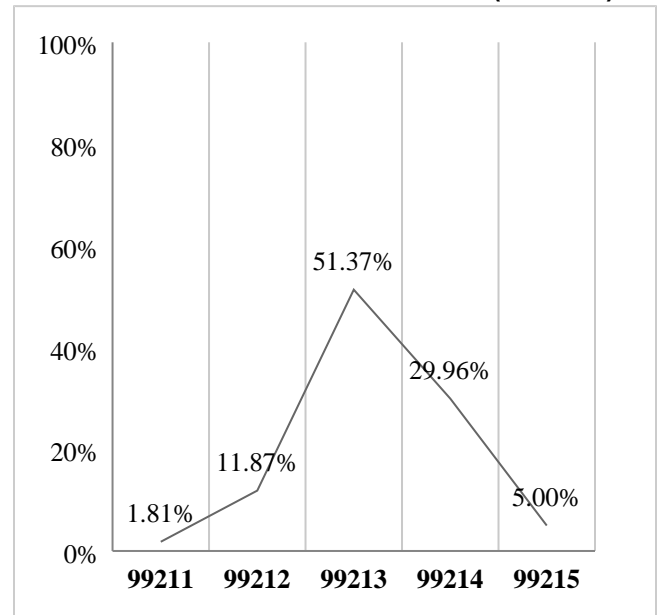


Table 1 - New Patient Office Visits

Code	All Claims	Office	Outpatient	Emergency Department
99201	1.67%	1.53%	2.89%	4.81%
99202	13.16%	12.95%	15.49%	27.88%
99203	39.17%	39.26%	35.70%	42.79%
99204	35.74%	36.22%	33.14%	20.19%
99205	10.26%	10.04%	12.78%	4.33%
Total	100%	100%	100%	100%

Table 2 - Established Patient Office Visits

Code	All Claims	Office	Outpatient	Emergency Department
99211	1.81%	1.87%	1.17%	0.90%
99212	11.87%	11.53%	15.96%	16.29%
99213	51.37%	51.47%	52.14%	47.06%
99214	29.96%	30.45%	25.72%	30.77%
99215	5.00%	4.69%	5.01%	4.98%
Total	100%	100%	100%	100%