

57155

57155 Insertion of uterine tandem and/or vaginal ovoids for clinical brachytherapy
 (For placement of needles or catheters into pelvic organs and/or genitalia [except prostate] for interstitial radioelement application, use 55920)
 (For insertion of radioelement sources or ribbons, see 77761-77763, 77770, 77771, 77772)

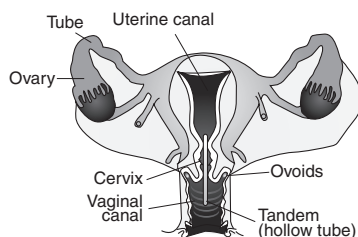
AMA Coding Notes Surgical Procedures on the Female Genital System

- (For pelvic laparotomy, use 49000)
- (For excision or destruction of endometriomas, open method, see 49203-49205, 58957, 58958)
- (For paracentesis, see 49082, 49083, 49084)
- (For secondary closure of abdominal wall evisceration or disruption, use 49900)
- (For fulguration or excision of lesions, laparoscopic approach, use 58662)
- (For chemotherapy, see 96401-96549)

Plain English Description

A uterine tandem and/or vaginal ovoids are inserted for separately reportable delivery of clinical brachytherapy. Uterine tandem and vaginal ovoids are empty radiation applicator devices that are loaded with a radiation source after being placed by the surgeon. Intracavitary radiation of the uterus or vagina using a tandem or ovoids delivers high dose radiation to a malignant neoplasm while limiting the volume of tissue affected by the radiation. A uterine tandem is used for treatment of neoplasms of the lower uterus and uterine cervix. Vaginal ovoids are used primarily for vaginal cuff neoplasms and neoplasms in the upper third of the vagina. Often both a uterine tandem and vaginal ovoids are placed simultaneously. The physician determines the appropriate number and location of the tandem and/or ovoids to be placed in the lower uterus and/or vagina. The tandem is inserted at the site of a tumor in the lower uterus or uterine cervix. The vaginal ovoids are placed laterally on each side of the fornix. Once the empty radiation applicator shells are placed, separately reportable afterloading of the radiation source is performed.

Insertion of uterine tandems/ vaginal ovoids



A curved tube or cylinder is used to insert radioactive material in the vagina.

ICD-10-CM Diagnostic Codes

- C52 Malignant neoplasm of vagina ♀
- C53.0 Malignant neoplasm of endocervix ♀
- C53.1 Malignant neoplasm of exocervix ♀
- C53.8 Malignant neoplasm of overlapping sites of cervix uteri ♀
- C54.0 Malignant neoplasm of isthmus uteri ♀
- C54.1 Malignant neoplasm of endometrium ♀
- C54.2 Malignant neoplasm of myometrium ♀
- C54.3 Malignant neoplasm of fundus uteri ♀
- C54.8 Malignant neoplasm of overlapping sites of corpus uteri ♀
- C55 Malignant neoplasm of uterus, part unspecified ♀
- C57.01 Malignant neoplasm of right fallopian tube ♀
- C57.02 Malignant neoplasm of left fallopian tube ♀
- C57.7 Malignant neoplasm of other specified female genital organs ♀
- C57.8 Malignant neoplasm of overlapping sites of female genital organs ♀
- C79.82 Secondary malignant neoplasm of genital organs
- D06.0 Carcinoma in situ of endocervix ♀
- D06.1 Carcinoma in situ of exocervix ♀
- D06.7 Carcinoma in situ of other parts of cervix ♀
- D07.0 Carcinoma in situ of endometrium ♀
- D07.2 Carcinoma in situ of vagina ♀
- D07.39 Carcinoma in situ of other female genital organs ♀
- D39.0 Neoplasm of uncertain behavior of uterus ♀
- D39.8 Neoplasm of uncertain behavior of other specified female genital organs ♀
- N89.0 Mild vaginal dysplasia ♀
- N89.1 Moderate vaginal dysplasia ♀
- R87.624 Cytologic evidence of malignancy on smear of vagina ♀
- Z85.41 Personal history of malignant neoplasm of cervix uteri ♀
- Z85.42 Personal history of malignant neoplasm of other parts of uterus ♀
- Z85.44 Personal history of malignant neoplasm of other female genital organs ♀

CCI Edits

Refer to Appendix A for CCI edits.

AMA CPT Assistant

57155: Apr 09: 3, Feb 02: 8

Facility RVUs

Global: 000

Code	Work	PE Facility	MP	Total Facility
57155	5.40	2.43	0.48	8.31

Non-facility RVUs

Code	Work	PE Non-Facility	MP	Total Non-Facility
57155	5.40	6.36	0.48	12.24

Modifiers (PAR)

Code	Mod 50	Mod 51	Mod 62	Mod 66	Mod 80
57155	0	2	2	0	1