

33530

+ 33530 Reoperation, coronary artery bypass procedure or valve procedure, more than 1 month after original operation (List separately in addition to code for primary procedure)

(Use 33530 in conjunction with 33400-33496; 33510-33536, 33863)

AMA Coding Guideline

Combined Arterial-Venous Grafting for Coronary Bypass

The following codes are used to report coronary artery bypass procedures using venous grafts and arterial grafts during the same procedure. These codes may NOT be used alone.

To report combined arterial-venous grafts it is necessary to report two codes: (1) the appropriate combined arterial-venous graft code (33517-33523); and (2) the appropriate arterial graft code (33533-33536).

Procurement of the saphenous vein graft is included in the description of the work for 33517-33523 and should not be reported as a separate service or co-surgery. Procurement of the artery for grafting is included in the description of the work for 33533-33536 and should not be reported as a separate service or co-surgery, except when an upper extremity artery (eg, radial artery) is procured. To report harvesting of an upper extremity artery, use 35600 in addition to the bypass procedure. To report harvesting of an upper extremity vein, use 35500 in addition to the bypass procedure. To report harvesting of a femoropopliteal vein segment, report 35572 in addition to the bypass procedure. When surgical assistant performs arterial and/or venous graft procurement, add modifier 80 to 33517-33523, 33533-33536, as appropriate. For percutaneous ventricular assist device insertion, removal, repositioning, see 33990-33993.

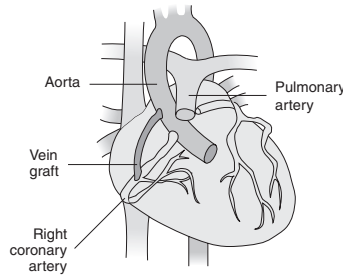
Please see the Surgical Guidelines section for the following guidelines:

- *Surgical Procedures on the Cardiovascular System*

Plain English Description

The heart is accessed by reopening the sternum. Special care must be taken because of scar tissues that may have formed from the previous surgery. Cardiopulmonary bypass is initiated to maintain heart function and the reoperation for coronary artery bypass or valve procedure is completed. Cardiopulmonary bypass is discontinued and the chest is closed. Report when the operation is done more than one month after the original procedure.

Reoperation, coronary artery bypass procedure or valve procedure



A previous coronary bypass procedure or valve operation is redone after a month has passed

ICD-10-CM Diagnostic Codes

See Primary Procedure code for crosswalks.

CCI Edits

Refer to Appendix A for CCI edits.

AMA CPT Assistant

33530: Apr 01: 7, Fall 91: 5, Feb 05: 13, 14, Feb 11: 8, Jan 07: 7, Jul 01: 11, Winter 90: 6, Winter 92: 13

Facility RVUs

Global: ZZZ

Code	Work	PE Facility	MP	Total Facility
33530	10.13	2.94	2.15	15.22

Non-facility RVUs

Code	Work	PE Non-Facility	MP	Total Non-Facility
33530	10.13	2.94	2.15	15.22

Modifiers (PAR)

Code	Mod 50	Mod 51	Mod 62	Mod 66	Mod 80
33530	0	0	0	0	2