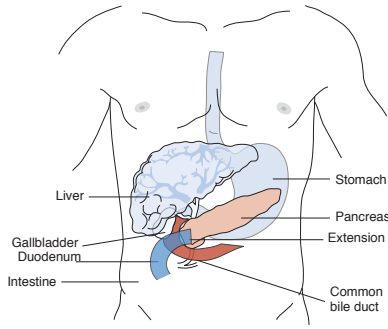


48552 Backbench reconstruction of cadaver donor pancreas allograft prior to transplantation, venous anastomosis, each C

RVU			Global Days		Modifiers			
Mod	Non-Fac Total	Fac Total	50	51	62	80		
	6.90	6.90	XXX	0	2	1	2	

Pub 100-4, 3, 90.5-90.5.1

Backbench reconstruction of cadaver donor pancreas allograft prior to transplantation



A donor pancreas from a cadaver is prepared for transplant

48554 Transplantation of pancreatic allograft C PQR

RVU			Global Days		Modifiers			
Mod	Non-Fac Total	Fac Total	50	51	62	80		
	74.59	74.59	090	0	2	2	2	

Pub 100-3, 1, 260.3; 100-4, 3, 90.5-90.5.1

48556 Removal of transplanted pancreatic allograft C PQR

RVU			Global Days		Modifiers			
Mod	Non-Fac Total	Fac Total	50	51	62	80		
	37.10	37.10	090	0	2	2	2	

Pub 100-4, 3, 90.5-90.5.1

Other Pancreas Procedures

48999 Unlisted procedure, pancreas I X

RVU			Global Days		Modifiers			
Mod	Non-Fac Total	Fac Total	50	51	62	80		
	0.00	0.00	YYY	0	2	1	2	

AMA: Dec 2007:12

Abdominal/Peritoneum/Omentum Procedures

Incisional Abdominal/Peritoneum/Omentum Procedures

Coding Guidance

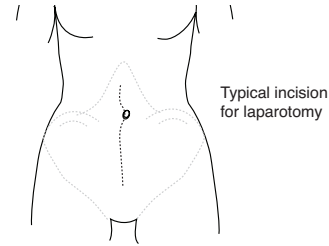
Exploratory laparotomy is not reported with an open abdominal procedure. Surgical field exploration to identify anatomical structures and anomalies is routine with open surgery. If abnormalities identified during open surgery through routine exploration require an enlarged surgical field and make the procedure unusual, then the appropriate modifier for an unusual service provided may be appended.

49000 Exploratory laparotomy, exploratory celiotomy with or without biopsy(s) (separate procedure) C PQR

RVU			Global Days		Modifiers			
Mod	Non-Fac Total	Fac Total	50	51	62	80		
	22.51	22.51	090	0	2	1	2	

AMA: Fall 1992:23, Mar 2001:10, Nov 2008:7

Exploratory laparotomy, exploratory celiotomy with or without biopsy(s)



Typical incision for laparotomy

An access incision is made into the abdominal cavity for exploratory purposes. Biopsy samples may be collected during the surgical session.

49002 Reopening of recent laparotomy C PQR

RVU			Global Days		Modifiers			
Mod	Non-Fac Total	Fac Total	50	51	62	80		
	30.43	30.43	090	0	2	1	2	

AMA: Fall 1992:23, Nov 2008:7

49010 Exploration, retroperitoneal area with or without biopsy(s) (separate procedure) C PQR

RVU			Global Days		Modifiers			
Mod	Non-Fac Total	Fac Total	50	51	62	80		
	27.59	27.59	090	0	2	1	2	

49020 Drainage of peritoneal abscess or localized peritonitis, exclusive of appendiceal abscess; open C PQR

RVU			Global Days		Modifiers			
Mod	Non-Fac Total	Fac Total	50	51	62	80		
	46.39	46.39	090	0	2	0	2	

49021 Drainage of peritoneal abscess or localized peritonitis, exclusive of appendiceal abscess; percutaneous I

Coding Tip: Radiological guidance for percutaneous drainage - 75989

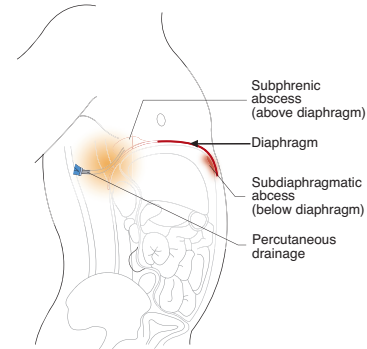
RVU			Global Days		Modifiers			
Mod	Non-Fac Total	Fac Total	50	51	62	80		
	26.47	4.94	000	0	2	0	1	

49040 Drainage of subdiaphragmatic or subphrenic abscess; open C PQR

RVU			Global Days		Modifiers			
Mod	Non-Fac Total	Fac Total	50	51	62	80		
	29.27	29.27	090	0	2	1	2	

AMA: Nov 1997:18

Drainage of subdiaphragmatic or subphrenic abscess



Open (49040); percutaneous (49041)