

Procedural Coding Expert

The Ultimate Guide to CPT® Coding



2011

Contents

| | | | |
|---|------------|--|-----------|
| Preface | ii | Time | 4 |
| Sources and Contributors | ii | Evaluation and Management Services | 4 |
| Introduction | iii | Office or Other Outpatient Services | 4 |
| CPT (HCPCS Level I) Codes | iii | Determining New or Established Patient | 4 |
| Locating a CPT Code | iii | Office/Outpatient Visits | 4 |
| CPT Symbols | iii | Hospital Observation Services | 6 |
| Add-on Codes | iv | Hospital Observation Discharge Services | 6 |
| Modifiers | iv | Initial Observation Visits | 6 |
| Unlisted Procedure or Service | iv | Subsequent Outpatient Care | 7 |
| Surgical Package | iv | Hospital Inpatient Services | 8 |
| Category II Codes | iv | Subsequent Hospital Care | 9 |
| Category III Codes | iv | Hospital Discharge Services | 10 |
| Using the Procedural Coding Expert | iv | Consultation Visits | 10 |
| Procedural Coding Expert Conventions | 1 | Inpatient Consultation Visits | 12 |
| Punctuation | 1 | Emergency Department Visits | 13 |
| Text Formatting | 1 | Critical Care | 14 |
| Symbols | 1 | Nursing Facility Visits | 16 |
| Additional Code Level Indicators | 3 | Domiciliary, Rest Home (e.g., Boarding Home), or Custodial Care Services | 18 |
| Code Level Enhancements | 3 | Domiciliary, Rest Home (e.g., Assisted Living Facility), or Home Care Plan Oversight Services | 19 |
| Modifier Rules | 3 | Home Services | 20 |
| CPT Modifiers | 5 | Prolonged Services | 22 |
| Modifiers and Coding Tips | 5 | Case Management Services | 23 |
| Coding Reference Information | 10 | Medical Team Conferences | 23 |
| Root Words | 10 | Preventive Medicine Services | 25 |
| Prefixes | 11 | Counseling Risk Factor Reduction and Behavior Change Intervention | 27 |
| Suffixes | 11 | Non-Face-to-Face Physician Services | 28 |
| Abbreviations | 12 | Special Evaluation and Management Services | 29 |
| Coding Terms Glossary | 17 | Newborn Care Services | 29 |
| The Physician Quality Reporting System | 28 | Inpatient Neonatal Intensive Care Services and Pediatric and Neonatal Critical Care Services | 30 |
| List of Nerves with Added Specificity | 31 | Inpatient Neonatal and Pediatric Critical Care | 30 |
| Anatomical Color Plates | 33 | Initial and Continuing Intensive Care Services | 31 |
| Alphabetical Index | 1 | Anesthesia Services | 33 |
| Tabular List | 1 | Anesthesia Coding Guidance | 33 |
| Evaluation and Management Services | 1 | Anesthesia Services | 35 |
| Evaluation and Management Services Documentation | 1 | Head Anesthesia Procedures | 35 |
| 1995 Federal Guidance | 2 | Neck Anesthesia Procedures | 36 |
| 1997 Federal Guidance | 2 | Chest Wall, Thorax, Shoulder Anesthesia Procedures | 37 |
| Counseling | 4 | Intrathorax Anesthesia Procedures | 37 |
| | | Spine/Spinal Cord Anesthesia Procedures | 39 |

| | | | |
|---|------------|---|------------|
| Abdominal Anesthesia Procedures | 40 | Chemistry Testing | 502 |
| Perineal Anesthesia Procedures | 42 | Hematology/Coagulation Testing | 525 |
| Pelvic Anesthesia Procedure | 44 | Immunological Testing..... | 530 |
| Upper Leg Anesthesia Procedures..... | 44 | Tissue Type Testing | 538 |
| Knee/Knee Region Anesthesia Procedures..... | 45 | Transfusion Testing | 538 |
| Lower Leg/Ankle/Foot Anesthesia Procedures | 46 | Microbiology Testing | 543 |
| Shoulder/Axilla Anesthesia Procedures..... | 47 | Anatomical Pathology (Necropsy)..... | 553 |
| Upper Arm/Elbow Anesthesia Procedures | 48 | Cytopathology Testing..... | 554 |
| Forearm/Wrist/Hand Anesthesia Procedures..... | 49 | Cytogenic Testing..... | 557 |
| Radiological Anesthesia Procedures..... | 49 | Surgical Pathology Specimen Testing..... | 559 |
| Burn Excision/Debridement Anesthesia Procedures.. | 50 | Other Laboratory/Pathology Procedures | 565 |
| Obstetrical Anesthesia Procedures | 50 | Reproductive Medicine Procedures/Testing..... | 565 |
| Other Anesthesia Procedures | 51 | Medicine Procedures/Services..... | 568 |
| Surgical Procedures | 53 | Immune Globulin Administration | 568 |
| Fine Needle Aspiration..... | 55 | Vaccine/Toxic Administration | 569 |
| Skin Procedures | 55 | Vaccine/Toxoid Supply..... | 570 |
| Breast Procedures | 88 | Psychiatry | 575 |
| Musculoskeletal Procedures..... | 93 | Gastroenterology Procedures | 582 |
| Respiratory Procedures | 194 | Ophthalmology Services/Procedures..... | 583 |
| Cardiovascular Procedures | 211 | Otorhinolaryngological Services | 588 |
| Hemic/Lymphatic Procedures..... | 254 | Cardiovascular Services/Procedures | 593 |
| Digestive System Procedures..... | 260 | Vascular Diagnostic Services (Noninvasive)..... | 610 |
| Urinary Procedures | 318 | Pulmonary Services/Procedures..... | 613 |
| Male Genital Procedures | 340 | Allergy/Immunology Services/Procedures..... | 617 |
| Reproductive System Procedures | 350 | Endocrinology Services | 619 |
| Female Genital System..... | 350 | Neurology/Neuromuscular Services/Procedures ... | 620 |
| Maternity Care/Delivery Procedures..... | 366 | Medical Genetics/Genetic Counseling | 628 |
| Endocrine System Procedures..... | 372 | Central Nervous System Cognitive Assessment/ Testing | 628 |
| Nervous System Procedures..... | 374 | Health and Behavior Assessment/Intervention Services | 630 |
| Eye/Ocular Procedures..... | 406 | Chemotherapy Administration Services | 631 |
| Auditory System Procedures | 424 | Photodynamic Therapy Procedures | 633 |
| Surgical Operating Microscope..... | 430 | Dermatological Procedures | 633 |
| Radiological Procedures | 431 | Physical Medicine/Rehabilitation Therapy Services | 634 |
| Diagnostic Radiology Procedures | 431 | Medical Nutrition Therapy Services..... | 638 |
| Diagnostic Ultrasound Procedures | 467 | Acupuncture Procedures..... | 638 |
| Radiological Guidance | 474 | Osteopathic Manipulation | 638 |
| Mammographies | 475 | Chiropractic Manipulation | 638 |
| Bone/Joint Studies..... | 476 | Patient Self-Management Education and Training | 639 |
| Radiation Oncology Services..... | 477 | Non-Face to Face Nonphysician Practitioner Services | 639 |
| Nuclear Medicine Procedures | 483 | Special Services/Procedures/Reports..... | 640 |
| Laboratory/Pathology Services | 497 | Anesthesia Qualifying Circumstances | 641 |
| Organ/Disease Panel Studies..... | 497 | Conscious Sedation..... | 641 |
| Clinical Pathology Consultations | 501 | | |
| Urinalysis/Urine Tests | 502 | | |

Titration, Titrant – Adjusting the concentration of a solution (such as an injectable drug) so that the smallest possible amount (or lowest concentration) of the active ingredient is used that will achieve the desired effect.

Tomography – From the Greek words “to cut or section” (tomos) and “to write” (graphein), in nuclear medicine, it is a method of separating interference from the area of interest by imaging a cut section of the object.

Total Parenteral Nutrition (TPN) – Intravenous administration of solution that provides the infant with necessary nutrients—protein, sugar, fat, minerals, and vitamins.

Total Urine Protein – Kidney function test determined by a 12 or 24 hour urine collection.

Tourette’s Syndrome – An abnormal condition characterized by tics and other movements like eye blinks or facial twitches that cannot be controlled.

Toxic Goiter – An enlarged thyroid gland that produces too much thyroid hormone.

Trachea – The windpipe. It should be in the middle of the neck but can be pushed to the side by a large goiter, especially a substernal goiter.

Transesophageal Echocardiography (TEE) – A diagnostic test that analyzes sound waves bounced off the heart. The sound waves are sent through a tube-like device inserted in the mouth and passed down the esophagus (food pipe), which ends near the heart. This technique is useful in studying patients whose heart and vessels, for various reasons, are difficult to assess with standard echocardiography.

Trans Fat – Created when hydrogen is forced through an ordinary vegetable oil (hydrogenation), converting some polyunsaturates to monounsaturates, and some monounsaturates to saturates. Trans fat, like saturated fat, tends to raise LDL cholesterol levels and, unlike saturated fat, trans fat also lowers HDL cholesterol level at the same time.

Transfusion – A treatment for anemia in which red blood cells are added directly to the baby’s blood supply through an IV.

Transient Ischemic Attack (TIA) – A temporary, stroke-like event that lasts for only a short time and is caused by a temporarily blocked blood vessel.

Transplantation – Replacing a defective organ with one from a donor.

TRH Test – A very sensitive test for abnormal thyroid function.

Tricuspid Valve – The structure that controls blood flow from the heart’s right atrium (upper chamber) into the right ventricle (lower chamber).

Triglycerides – The most common fatty substances found in the blood; normally stored as an energy source in fat tissue. High triglyceride levels tend to accompany high cholesterol levels and other risk factors for heart disease such as obesity.

Triiodothyronine (T3) – The second hormone produced by the thyroid gland. It is more potent than thyroxine (T4).

Tumor – Any swelling or tumefaction.

Tunnel Vision – A reduced visual field in which the eyes only see straight ahead (no peripheral vision). It may be due to certain eye diseases, such as glaucoma.

Tympanometry – A test that allows for air and sound to be directed into the middle ear.

Ultrasound – High-frequency sound waves. Ultrasound waves can be bounced off of tissues using special devices. The echoes are then converted into a picture called a sonogram. Ultrasound imaging, referred to as ultrasonography, allows physicians and patients to get an inside view of soft tissues and body cavities, without using invasive techniques.

Unilateral – Having, or relating to, one side. Unilateral is as opposed, for example, to bilateral (which means having, or relating to, two sides).

Upper GI Series – An x-ray exam of the upper part of the digestive tract.

Urethritis – An infection limited to the urethra.

Urokinase – An enzyme derived from human urine that dissolves blood clots.

Urticaria – A skin condition commonly known as hives.

Uvea – Part of the eye, the uvea collectively refers to the iris, the choroid of the eye, and the ciliary body.

Valvular Regurgitation – Regurgitation of blood (blood moving the wrong way) in the heart. Caused by a heart valve malfunction.

Valvuloplasty – The reshaping of a heart valve with surgical or catheter techniques.

Varicose Vein – Any vein that is abnormally dilated, usually from long-standing pressure within it.

Vascular – Pertaining to the blood vessels.

Vasodilators – Any medications that dilate (widen) the arteries.

Vasopressors – Any medications that elevate blood pressure.

Veins – Any of a series of blood vessels of the vascular system that carry blood from various parts of the body back to the heart. Veins return oxygen-depleted blood to the heart.

Ventricles (Right and Left) – The two lower chambers of the heart.

Ventricular Fibrillation – A condition in which the ventricles contract in a rapid, unsynchronized fashion. When fibrillation occurs, the ventricles cannot pump blood throughout the body.

Ventricular Tachycardia – An arrhythmia (abnormal heartbeat) in the ventricle, characterized by a very fast heartbeat

Vertebra – One of the 33 bones of the spinal column. A cervical, thoracic, or lumbar vertebra has a cylindrically-shaped bony anteriorly and a neural arch posteriorly (composed primarily of the laminae and pedicles as well as the other structures in the posterior aspect of the vertebra) that protects the spinal cord. The plural of vertebra is vertebrae.

Vertigo – A feeling of dizziness or spinning.

Visual Acuity – The clarity or clearness of the vision, a measure of how well a person sees. The ability to distinguish details and shapes of objects; also called central vision.

Vitreous Humor – The vitreous humor is a clear, jelly-like substance that fills the middle of the eye.

Wolff-Parkinson-White Syndrome – A condition in which an extra electrical pathway connects the atria (two upper chambers) and the ventricles (two lower chambers). It may cause a rapid heartbeat.

X-ray – A form of radiation used to create a picture of internal body structures on film.

The Physician Quality Reporting System

Background

The Physician Quality Reporting System, previously called the Physician Quality Reporting Initiative (PQRI), is a voluntary program that provides a financial incentive to physicians and all eligible professionals (EPs) who successfully report data on quality measures for covered services provided to Medicare beneficiaries under the Medicare Physician Fee Schedule (PFS). Section 1848 (k) of the Social Security Act, as added by Division B, Title 1, Section 101, of the Tax Relief and Health Care Act of 2006 (TRHCA), mandates the establishment of a physician quality reporting system along with an incentive payment. Participation in PQRI gives EPs an opportunity to improve the care of patients using established clinical guidelines for evidence-based measures. In addition, participation includes a financial incentive to EPs calculated as a percentage of total allowed charges for covered services.

The PQRI program was established in 2007 and initially measured data on 74 clinical quality measures between July and December 2007. For each program year, CMS implements PQRI through an annual rulemaking process published in the *Federal Register*.

In the 2008 PQRI, there were a total of 119 measures that EPs could select from: 117 clinical quality measures, and 2 structural measures (use of electronic health records and electronic prescribing). The 2009 PQRI consisted of 153 quality measures and 7 measures groups. In 2010, CMS identified 179 quality measures consisting of 175 individual quality measures and 4 measures in the back pain measures group. For 2011, there are 194 quality measures.

On December 29, 2007 the Medicare, Medicaid, and SCHIP Extension Act of 2007 (MMSEA) was signed, authorizing the continuation of the PQRI for 2008 and 2009. MMSEA provisions required the establishment of alternative reporting periods and alternative criteria for satisfactorily reporting measures groups and for reporting measures data through medical registries. MMSEA also removed the cap on incentive payments.

The Medicare Improvements for Patients and Providers Act of 2008 (MIPPA) made the PQRI program permanent, but only authorized incentive payments through 2010. EPs who met the criteria for satisfactory submission of quality measures data for services furnished during the 2009 or 2010 reporting period qualified to earn an incentive payment of 2.0% of their total estimated allowed charges for Medicare Part B PFS covered professional services furnished during that same period.

The Affordable Care Act of 2009 made a number of changes to the Physician Quality Reporting System, including authorizing incentive payments through 2014 and requiring a penalty, beginning in 2015, for EPs who do not satisfactorily report quality measures. EPs who meet the criteria for satisfactory submission of quality measures data for services furnished during the 2011 reporting period will qualify to earn an incentive payment of 1.0 percent of their total estimated allowed charges for Medicare Part B PFS covered professional services furnished during that same period. For 2012 through 2014, EPs may earn an incentive payment of 0.5 percent of their total estimated allowed charges for Medicare Part B PFS covered professional services furnished during the respective reporting periods.

Beginning in 2015, EPs who do not satisfactorily report Physician Quality Reporting System measures may be subject to a payment adjustment, or penalty. Specifically, if an EP does not satisfactorily report for the reporting period for the year, the PFS amount for covered professional services furnished by such professional during the year shall be less than the PFS amount that would otherwise apply by 1.5 percent for 2015 and 2.0 percent for 2016 and each subsequent year.

2011 Physician Quality Reporting System Participation

To participate in the 2011 Physician Quality Reporting System, EPs may participate under the individual or group practice reporting options.

Individual Reporting Option

For reporting purposes an individual EP is identified by their assigned National Provider Identifier (NPI). Individual EPs in single provider or group practices may elect to report information on individual measures or measures groups. Individual EPs may use one of three methods to report measures data:

- To CMS on Medicare Part B claims
- To a qualified registry
- To CMS via a qualified electronic health record (EHR) product

EPs who successfully report quality data to CMS will earn an incentive payment of 1.0 percent of their total estimated allowed charges for Medicare Part B PFS covered professional services provided during the reporting period.

Individual Measure Reporting for 2011

As in previous years, EPs must successfully report at least 3 quality measures or 1-2 measures if less than 3 measures apply to the EP on 80% of the Medicare Part B FFS patients to whom the measure applies during the designated reporting period. Detailed information on the 2011 measures, reporting periods, and reporting options are available on the CMS web site at http://www.cms.gov/PQRI/15_MeasuresCodes.asp#TopOfPage

Measures Groups Reporting for 2011

Measures groups reporting is an alternative reporting method that involves reporting on a group of clinically-related measures identified by CMS for use in the Physician Quality Reporting System rather than reporting on individual measures. Measures groups may be reported through claims-based and/or registry-based submission. Fourteen (14) measures groups have been established for 2011 Physician Quality Reporting and these are:

- Diabetes Mellitus
- Chronic Kidney Disease (CKD)
- Preventive Care
- Coronary Artery Bypass Graft (CABG)
- Rheumatoid Arthritis (RA)
- Perioperative Care
- Back Pain
- Hepatitis C
- Heart Failure (HF)
- Coronary Artery Disease (CAD)
- Ischemic Vascular Disease (IVD)

Narcosynthesis, 90865

Nasal

antrostomy, 31256-31267
 biopsy, 31050-31051
 bleeding, 30901-30906, 31238
 destruction, 31080-31085
 endoscopy, 31231-31297
 epistaxis, 30901-30906, 31238
 excision
 ethmoid, 31200-31205
 endoscopy, 31254-31255
 maxillary, 31225-31230
 polyp, 30110-30115
 exploration
 frontal, 31070-31075, 31276
 maxillary, 31020-31032, 31233
 sphenoid, 31050-31051, 31235
 fracture
 treatment, 21310-21337, 21343-21344
 turbinate, 30930
 function study, 92512
 graft
 bone, 21210
 incision, 31090
 drainage, 30000-30020
 frontal, 31070-31087
 maxillary, 31020-31032, 31256-31267
 sphenoid, 31287-31288
 injection, 20500-20501
 irrigation, 31000-31002
 prosthesis, 21087
 repair
 deformity, 40700-40761
 perforation, 30630
 resection, 30520
 sinusotomy, 31233-31297
 sinusotomy, 31090
 frontal, 31070-31087
 maxillary, 31020-31032
 sphenoid, 31050-31051
 smear, 89190
 surgery, 61581
 x-ray, 70160, 70210-70220
Nasoethmoid
 fracture treatment, 21338-21340
 reconstruction, 21182-21184
Nasogastric tube, 43752
Nasolacrimal duct
 probing, 68810-68816
 x-ray, 70170
Nasomaxillary
 fracture treatment, 21345-21348
Nasopharyngoscopy, 92511
Nasopharynx
 biopsy, 42804-42806
 endoscopy, 92511
 hemorrhage, 42970-42972
Natriuretic peptide, 83880
Natural
 killer (NK) cell, 86357
 ostium, 31000-31002
Navicular
 arthroplasty, 25443
 fracture treatment, 25622-25628
 nonunion, repair, 25440
Navigation, 20985
 stereotactic, 61781-61783
Neck
 angiography, 70498, 70547-70549
 biopsy, 21550
 computed tomography (CT) scan, 70490-70492, 70498
 dissection, radical, 31365-31368, 31390-31395
 with thyroidectomy, 60254
 excision
 tumor, 21555-21557
 exploration
 blood vessel, 35800
 lymph node, 38542
 penetrating wound, 20100
 graft
 blood vessel, 35231, 35261
 bypass, 35901

Neck — continued

graft — *continued*
 nerve, 64885-64886
 incision and drainage, 21501-21502
 ligation, 37615
 lipectomy, 15876
 magnetic resonance angiography (MRA), 70547-70549
 magnetic resonance imaging (MRI), 70540-70543
 muscle division, 21700-21705, 21720-21725
 repair
 blood vessel, 35201, 35231, 35261
 revision, 15819
 surgery, 21899
 ultrasound, 76536
 vessels, 00350-00352
 x-ray, 70360
Necropsy exam
 coroner, 88045
 forensic, 88040
 gross, 88000-88016
 and micro, 88020-88029
 organ, 88037
 regional, 88036
Needle
 biopsy
 abdomen, 49180
 bone, 20220-20225
 marrow, 38221
 breast, 19100
 localization
 guidance, 77021
 placement, 19290-19291
 with lesion excision, 19125-19126
 colon, 45392
 sigmoid, 45342
 computed tomography (CT) scan, 77012
 esophagus, 20950, 43232
 floroscopy, 77002
 gastrointestinal, 43238, 43242
 kidney, 50200
 liver, 47000-47001
 lung, 32405
 lymph node, 38505
 mediastinum, 32405
 muscle, 30206
 orbit, 67415
 pancreas, 48102
 pleura, 32400-32402
 prostate, 55700
 retroperitoneal, 49180
 salivary gland, 42400
 spine, 62269
 testis, 54500
 thyroid gland, 60100
 transbronchial, 31629, 31633
 trachea, 31730
Neer procedure, 23470
Neisseria
 gonorrhoea, 87590-87592, 87850
 meningitis, 86741
Neobladder, 51596
Neoplasm
 ankle, 27615
 back, 21935
 brain, 61600-61608, 61615-61616
 elbow, 24077
 flank, 21935
 foot, 28046
 hand, 26117
 head, 21015
 hip, 27049
 leg, 27615
 neck, 21557
 pelvis, 27049
 shoulder, 23077
Neoplasm
 spinal, 63275-63290
 thigh, 27329
 thorax, 21557
 wrist, 25077

Nephelometry, 83883

Nephrectomy

donor, 50300-50320, 50547
 laparoscopic
 donor, 50547
 partial, 50543
 radical, 50545
 with partial ureterectomy, 50546
 with total ureterectomy, 50548
 partial, 50240, 50543
 radical, 50230, 50545
 ureterectomy
 partial, 50220-50230, 50546
 total, 50234-50236, 50548
Nephrolithotomy, 50060-50075
Nephropathy, 3066F
Nephropexy, 50400-50405
Nephroplasty
 blood vessels, 50100
 fistula, 50520-50526
 horseshoe, 50540
 pelvis, 50400-50405
 wound, 50500
Nephrorrhaphy, 50500
Nephroscopy, 50551-50580
Nephrostogram, 50394
Nephrostolithotomy, 50080-50081
Nephrostomy, 50040
 endoscopic, 50562-50570
 percutaneous, 52334
 tract, 50395
 tube, 50398
 x-ray, 74485
Nephrotomogram, 74415
Nephrotomy, 50040-50045
Nerve(s)
 accessory, 63191
 anastomosis, 64866-64870
 avulsion, 64732-64772
 biopsy, 64795
 block, 01991-01992
 conduction
 motor, 95900-95903
 sensory, 95904
 cranial
 anastomosis
 facial, 64866-64870
 hypoglossal, 64868
 avulsion, 64732-64760, 64771
 facial, 64742
 vagus, 6452, 64755, 64760
 decompression, 61458, 64716
 facial, 61590, 61596, 69720, 69725, 69740, 69745, 69955
 optic, 31294, 67570
 destruction
 trigeminal, 64600-64610
 implantation
 electrode, 64553, 64568, 64575-64581
 incision, 64732-64752, 64760, 65771
 accessory, 63191
 facial, 64742
 vagus, 43640-43641, 64752, 64755, 64760
 injection, 64400-64408, 64412, 64600-64610
 facial, 64402
 vagus, 64408
 mobilization
 facial, 61590
 neuroplasty, 64716
 paralysis
 facial, 15840-15845
 repair, 64864-64865
 facial, 69740, 69745
 section, 61460
 suture
 facial, 69740, 69742, 69745
 study
 facial, 92516
 transection, 64732-64760, 64771

Nerve(s) — continued

cranial — *continued*
 transection — *continued*
 vagus, 43640-43641, 43651-43652, 64752, 64755, 6476
 transposition, 64716
 decompression
 plantar digital, 64726
 root, 63020-63048, 63055-63103
 unspecified, 64722
 destruction, 64600-64681
 laryngeal, 31595
 plantar, 64632
 excision
 foot, 28055
 lesion, 64774-64792
 neurofibroma/neurolemmoma, 64788-64792
 neuroma, 64774-64786
 electrode
 insertion, 64553-64581
 removal, 64585
 facial
 anastomosis, 64866, 64868, 64870
 avulsion, 64742
 decompression, 61590, 61596, 69720-69725, 69740-69745, 69955
 function studies, 92516
 graft, 15840-15845
 incision, 64742
 injection, 64402
 mobilization, 61590
 paralysis, 15840-15845
 suture, 64864-64865, 69740-69745
 transection, 64742
 foot, 58035, 28055
 graft, 64885-64911
 hypoglossal, 64868
 implant, 64787
 incision, 43640-43641, 64732-64772
 spinal accessory, 63191
 injection, 64455
 intercostal, 64620
 injection, 64420-64421, 64620
 lingual, 64740
 median, 64721
 compression, 64721
 repair, 64835
 microdissection, 69990
 neurolytic, 64632, 64727
 obturators, 01180-01190, 64763-64766
 optic, 31294, 67570
 peripheral, 64856-64859
 phrenic
 anastomosis, 64870
 avulsion, 64746
 incision, 64746
 injection, 64410
 transection, 64746
 root
 decompression, 63020-63048, 63055-63103
 incision, 63185-63190
 sciatic
 decompression, 64712
 excision
 lesion, 64786
 neuroma, 64786
 graft, 64897-64901
 injection, 64445-64446
 neuroplasty, 64712
 neurorrhaphy, 64858
 release, 64712
 repair, 64858
 suture, 64858
 spinal, 64772
 suture, 64831-64876
 sympathectomy, 64802-64818
 teasing, 88362
 tibial, 64840

Nerve(s) – continued

transection, 64732-64772
 vagotomy, 43640-43641
 transposition, 64718-64721
 trigeminal
 destruction, 64600-64610
 injection, 64400, 64600-64610
 ulnar
 decompression, 64719
 neuroplasty, 64718-64719
 reconstruction, 64718-64719
 release, 64718-64719
 repair, 64836
 suture, motor, 64838
 transposition, 64718-64719
 vagus
 avulsion, 64752-64760
 incision, 43640-43641, 64752-64760
 injection, 64408
 transection, 43640-43641, 43651-43652, 64752-64760
 vestibular, 69915, 69950
Nesidioblast, 0141T-0143T, 86341
Neural
 conduction, 95900-95904
 ganglion, 20612, 25111-25112, 61450, 64505, 64510
Neurectomy
 foot, 28055
 leg, 27325-27326
 tympanic, 69676
Neurobehavioral status, 96116
Neuroendoscopy, 62160-62165
Neurofibroma/neurolomoma, 64788-64792
 cutaneous nerve, 64788
 major peripheral nerve, 64790
 extensive, 64792
Neurofunctional test, 96020
Neurology procedures
 central motor, 95928-95929
 cerebral
 function testing
 aphasia, 96105
 cognitive, 96116
 developmental, 96110-96111
 neuropsychological, 96118-96120
 mapping, 96020
 performance, 96125
 stimulation
 electrode, 95961-95962
 diagnostic
 autonomic function, 95921-95923
 sphincter, 51785
 electrocorticogram, 95829
 electroencephalogram (EEG), 95816, 95965-95967
 24-hour, 95950-95953, 95956
 all night, 95827
 cerebral death, 95824
 coma, 95822
 digital analysis, 95957
 electrode insertion, 95830
 functional mapping, 95961-95962
 intraoperative, 95955
 monitoring, 95812-95813, 95950-95953, 95956
 pharmacological activation, 95954
 sleep, 95822, 95827
 standard, 95819
 WADA test, 95958
 electromyography
 dynamic, 96002-96004
 ischemic limb, 95875
 needle, 51785, 95860-95872, 95874
 stimulation guidance, 95873-95874
 evoked potentials
 central motor, 95928-95929
 short latency, 95925-95927

Neurology procedures – continued

evoked potentials – **continued**
 visual, 95930
 magnetoencephalogram (MEG), 95965-95967
 mapping, functional brain, 96020
 motion analysis, 96000, 96004
 range, 95851-95852
 muscle test, 95831-95831
 neuromuscular, 95937
 nerve conduction
 motor, 95900-95903
 sensory, 95904
 neurophysiologic, 95920
 polysomnography, 95808-95811
 reflex testing, 95933-95934
 sleep study, 95807-95810
 somatosensory testing, 95925-95927
 tensilon test, 95857
 urethral sphincter, 51785
Neurolysis, 64704-64708, 64727
Neuroma excision
 cutaneous, 64774
 digital, 64776-64778
 foot, 28080, 64782-64783
 hand, 64782-64783
 interdigital, 28080
 peripheral, 64784
 sciatic, 64786
 somatic nerve
 cutaneous, 64774
 digital, 64776-64778
 hand/foot, except digital, 64782-64783
 peripheral, except sciatic, 64784
 sciatic, 64786
Neuromuscular
 junction test, 95937
 pedicle, 31590
 reduction, 97112
Neurophysiologic testing
 autonomic, 95921-95923
 intraoperative, 95920
Neuroplasty
 cranial, 64716
 digital, 64702-64704
 peripheral, 64708-64714, 64718-64721
Neuropsychology testing, 96118-96125
Neurorrhaphy
 graft
 arm/leg, 64892-64893, 64897-64898
 hand/foot, 64890-64891, 64895-64896
 head/neck, 64885-64886
 multiple strand, 64895-64898, 64902
 pedicle transfer, 64905-64907
 peripheral, 64885-64911
 single strand, 64890-64893, 64901
 synthetic, 64910-64911
 vein, 64910-64911
 suture, 64831-64876
 brachial plexus, 64861
 digital nerve, 64831-64832
 facial, 64864-64870
 hand, foot, 64831-64837
 lumbar plexus, 64862
 major peripheral, except sciatic, 64856-64857, 64859
 sciatic, 64858
 synthetic conduit, 64910-64911
 vein allograft, 64910-64911
Neurostimulators
 application, 64550, 64566
 electronic analysis
 brain/cranial nerve, 95970, 95974-95975, 95978-95979
 gastric, 95980-95982
 spinal cord, 95970-95973
 implantation, electrode
 autonomic, 64560, 64577
 cortical, 61850-61860, 61870
 cerebellar, 61870-61875

Neurostimulators – continued

implantation, electrode – **continued**
 cerebral, 61860
 cranial, 64553, 64568
 epidural, 2044F, 63650-63655
 gastric, 0155T, 0157T, 43647, 43881
 neuromuscular, 64565, 64580
 peripheral, except sacral, 64555, 64575
 sacral, 64561, 64581
 subcortical, 61863-61868, 61875
 insertion, pulse generator/receiver
 cranial, 61885-61886
 gastric, 64590
 peripheral, 64590
 spinal, 63685
 removal
 electrodes, 0156T, 0158T, 43648, 43882, 61880, 63660, 64570, 64585
 pulse generator/receiver, 61888, 63688, 64595
 replacement
 electrodes, 0155T, 0157T, 43647, 43881
 pulse generator/receiver, 61885-61886, 63685, 64590
 revision
 electrodes, 0156T, 0158T, 43648, 43882, 61880, 63660, 64569, 64585
 pulse generator/receiver, 61888, 63688, 64595
Neurotomy, 61450
Neurovascular flap, 15750
Neutralization test, 86382
 phospholipid, 85597-85598
New patient care
 activity, 1002F-1003F
 consultation
 inpatient, 99251-99255
 office/outpatient, 99241-99245
 emergency, 99281-99288
 evaluation, 1119F-1121F
 home, 99341-99345
 rest/domiciliary, 99324-99328
 hospital, 99217-99239
 hydration, 2018F, 2030F-2031F
 oral, 4056F
 mental status, 2014F
 office
 consultations, 99241-99245
 initial visit, 99201-99205
 prenatal, 0500F-0503F
 risk, 1008F
 symptoms, 1004F-1007F, 1015F-1019F
 alarm, 1070F-1071F
 tobacco use, 1000F, 1043F-1036F
 visit, 0525F-0526F
 vital signs, 2000F, 2010F
 weight, 2001F
Newborn care, 99360, 99502
 catheterization, 36660
 circumcision, 54150, 54160
 evaluation and management, 99460-99463
 laryngoscopy, 31520
 prepuce, 54000
 transfusion, 36450
Nickel, 83885
Nicolas Durand Favre disease, 86729
Nicotine, 83887
Nissen procedure, 43280, 43325
Nitric oxide, 95012
Nitroblue tetrazolium test, 83684
Nitrogen, blood urea (BUN), 84520-84525
No man's land, 26356-26358
Nocardia, 86744
Nocturnal penile testing, 54250

Node

lymph
 biopsy, 38500-38530, 58943
 injection, 38792
 laparoscopic, 38570-38572
 needle, 38505
 open, 38500, 38510-38530
 prostate, 55812-55815, 55842-55845, 55862
 cannulation, 38794
 dissection, 38542, 38724
 drainage
 abscess, 38300-38305
 cyst, 49062, 49323
 excision, 19305-19307, 38500-38530
 hygroma, 38550-38555
 open, 38500, 38510-38530
 injection, 38790-38792
 lymphadenectomy
 abdominal, 38747
 axillary, 19302, 38740-38745
 cervical, 38720-38724
 gastric, 38747
 inguofemoral
 bilateral, 54130, 56632, 56637
 complete, 56631, 56640
 superficial, 38760-38765
 unilateral, 56631, 56634
 mediastinal, 19272, 21632
 para-aortic, 58951, 58954, 58958-58960
 pelvic, 38770, 58954, 58958-58960
 bilateral, 51575, 54135, 55815, 55845, 55865
 complete, 51585, 51595, 56640
 laparoscopy, 38571-38572
 limited, 38562, 55812, 55842, 55862, 58951
 total, 57109, 57112, 57531, 58210, 58548
 portal, 38747
 regional, 50230
 retroperitoneal, 38564, 38780
 sentinel node, 38792
 suprahyoid, 38700
 thoracic, 38746
 lymphadenitis, 38300-38305
 lymphangioma, 38308
 lymphoblast, 86353
 lymphocyte, 86805-86806, 86821-86822
 choriomeningitis, 86727
 thymus dependent, 86359-86361
 lymphocytotoxicity, 86805-86806
 lymphogranuloma venereum, 86729
 lymphoma virus, 86663-86665
 nuclear medicine, 78195
 sampling, 38570, 38572, 58200
Non-invasive vascular imaging
 extracranial, 93875-93882
 extremity, 93922-93926
 fetal, 76820-76821
 intracranial, 93886-93890
Non-stress fetal testing, 59025
Nonunion treatment
 femur, 27470-27472
 metatarsal, 28322
 tarsal, 28320
Noradrenalin, 82383-82384
Norchlorimipramine, 80174

Reconstruction

abdomen, 49905
 acetabulum, 27120-27122
 anus
 absence, 46730-46740
 fistula, 46742
 graft, 46753
 implant, 46762
 sphincter, 46750-46751, 46760-46762
 ankle, 27700-27703
 atrium, 33254-33259, 33265-33266
 auditory canal, 69310-69320
 bile duct, 47800
 bladder, 50800-50820, 51960
 breast, 19316-19396
 bronchi, 31770-31775, 32501
 cardiac anomaly, 38622
 carpal bone, 25394, 25430, 25443
 cheek bone, 21270
 chest wall, 32504, 32820
 cleft palate, 42200-42225
 conjunctiva, 68320-68399
 cranium, 21181-21184
 ear
 external, 69300-69320, 69399
 middle, 69604-69661
 elbow, 24630-24363
 epispadias, 54380-54390
 esophagus, 43300-43425
 eye, 65780-65782
 lid, 67930-67999
 fallopian tube, 58760
 femur, 27465-27468
 fibula, 27715
 finger
 macroductyly, 26590
 polyductyly, 26587
 syndactyly, 26560-26562
 foot, 28360
 forehead, 21172-21184
 glenoid fossa, 21255
 gums, 41872-41874
 hammertoe, 28285-28586
 hand, 26390, 26500-26502, 26551-26556
 heart
 aortic conduit, 33404
 atria, 33254-33259
 septum, 33735-33737
 graft insertion, 33330-33335
 shunt, 33924
 suture, 33300-33305, 33320-33322
 tissue ablation, 33254-33259
 valve, 33400-33417
 mitral, 33425-33430
 tricuspid, 33463-33468
 pulmonary, 33475, 33475
 vena cava, 34502
 hip, 27130-27138
 joint, 27125
 hypospadias, 54300-54352
 interphalangeal joint, 26535-26536
 intestines, 43845, 44130
 joint
 ankle, 27700-27703
 elbow, 24630-24363
 hip, 27125
 interphalangeal, 26535-26536
 knee, 27437-27447
 metacarpophalangeal, 26530-26531
 shoulder, 23470-23472
 knee, 27437-27447
 cap, 27420-27424
 larynx, 31545-31546, 31580-31588
 lip, 40525-40527, 40761
 lunate, 25444
 macroductyly
 finger, 26590
 toe, 28340-28341
 malar, 21210, 21270
 mandible, 21244-21249
 rami, 21193-21196
 maxilla, 21245-21249

Reconstruction – continued

metacarpophalangeal joint, 26530-26531
 mouth, 40840-40845
 nail bed, 11762
 nasoethmoid complex, 21182-21184
 navicular, 25443
 nose, 30400-30465
 choanal atresia, 30540-30545
 fistula, 30580-30600
 septum, 30520, 30620-30630
 omentum, 49905
 orbit, 21256, 21275
 rim, 21172-21184
 oviduct, 58760
 palate, 42200-42227
 parotid duct, 42507-42510
 penis
 angulation, 54360
 chordee, 54300
 epispadias, 54380-54390
 hypospadias, 54300-54352
 pharynx, 42950
 polyductyly
 finger, 26587
 toe, 28344
 pyloric sphincter, 43800
 radius, 24365-24633, 25390-25393, 25441
 shoulder joint, 23470-23472
 skull, 21172-21180, 62140-62141, 62145-62147
 spine, 63051, 63295
 sternum, 21740-21743
 stomach
 duodenum, 43810, 43850-43855, 43865
 jejunum, 43820-43825, 43860
 obesity, 43644-43645, 43845-43848
 Roux-en-Y, 43644, 43846
 symplepharon, 68335
 temporomandibular joint, 21240-21243
 throat, 42950
 thumb, 26490-26496, 26550
 tibia, 27418, 27715
 toe
 angulation, 28313
 hammertoe, 28285-28286
 macroductyly, 28340-28341
 polyductyly, 28344
 syndactyly, 28345
 webbed, 28345
 tongue, 41520
 trachea, 31750-31766
 trapezium, 25445
 tympanic membrane, 69610-69646
 ulna, 25390-25393, 25442
 with radius, 25337
 ureter, 50700, 50840
 urethra, 53400-53431, 53450-53460, 53502-53520
 hypospadias, 54300-54352
 uterus, 58540
 vena cava, 34502, 37799
 wound, 13100-13160
 wrist, 25320-25335
 zygoma, 21255
Rectal, 00902
 bleeding, 45317
 prolapse, 45130-45135, 45900
 sphincter, 45910
 tumor, 0184T
Rectocele, 45560
Rectopexy
 laparoscopic, 45400-45402
 open, 45540-45550
Rectoplasty, 45500-45505
Rectorrhaphy
 fistula, 45800-45825
 prolapse, 45540-45541
Rectovaginal fistula, 57300-57308
Rectum
 biopsy, 45100
 bleeding, 45317

Rectum – continued

destruction, 45190, 45320, 46937-46938
 dilation, 45303, 45910
 excision
 colon, 45121
 lesion, 45108
 partial, 45111, 45113-45116, 45123
 prolapse, 45130-45135
 total, 45110, 45112, 45119-45120
 tumor, 45160-45170
 exploration
 endoscopic, 45300
 surgical, 45990
 fecal impaction
 removal, 45915
 foreign body
 removal, 45307, 45915
 hemorrhage, 45317
 injection, sclerosing agent, 45520
 laparoscopy, 45499
 manometry, 91122
 prolapse
 excision, 45130-45135
 suture, 45540-45541
 repair
 fistula, 0170T, 45800-45825
 prolapse, 45505, 45540-45550, 45900
 rectocele, 45560
 stenosis, 45500-45505
 suture
 fistula, 45800-45825
 prolapse, 45540-45550
 tone, 91120
Red blood cell(s)
 antibody, 86850-86870
 pretreatment, 86970-86972
 count, 85032-85041
 fragility, 85547, 85555-85557
 hematocrit, 85014
 morphology, 85007
 platelet estimation, 85007
 sedimentation rate, 85651-85652
 sequestration, 78140
 sickling, 85660
 survival test, 78130-78135
 volume determination, 78120-78121
Reductase
 glutathione, 82979
 lactic dehydrogenase, 83615-83625
Reduction
 breast, 19318
 facial bones, 21209
 forehead, 21137-21139
 lung, 32491
 mammoplasty, 19318
 masseter, 21295-21296
 multifetal pregnancy, 59866
 skull
 enlarged cranium, 62115-62117
 facial bone, 21209
Reflex test, 95933-95936
Reflux study, 78262
 gastroesophageal, 91034-91038
Refraction, 92015
Rehabilitation
 auditory, 92630-92633
 status evaluation, 92626-92627
 cardiac, 93797-93798
 peripheral artery disease, 93668
Reimplantation
 artery, 35691-35697
 carotid-subclavian, 35695
 pulmonary, 33788
 subclavian-carotid, 35694
 vertebral-carotid, 35691
 vertebral-subclavian, 35693
 visceral, 35697
 kidney, 50380
 ovary, 58825
 ureter, 50780-50785, 51565
Reinnervation, 31590

Reinsch test, 83015**Reinsertion**

contraceptive capsules, 11977
 device
 drug delivery implant, 11983
 spinal fixation, 22849

Relative density, 84315**Release**

carpal tunnel, 64721
 contraction
 elbow, 24149
 hip flexor muscle, 27036
 knee muscle, 27422
 hormone, 84307
 nerve, 64702-64727
 retinal material, 67115
 spinal cord, 63200
 stapes, 69650
 tarsal tunnel, 28035
 tendon, 24332, 25295

Removal

balloon assist device
 intra-aortic, 33968, 33971, 33974
 blood component, 36511-36516
 plasma, 36514
 reinfusion, 36515-36516
 platelets, 36513
 red blood cell, 36512
 white blood cell, 36411
 breast, 19300-19307
 bronchial valve, 0251T-0252T
 calculus
 bile duct, 43264, 47420-47425, 47554, 47630
 bladder, 51050, 52310-52318, 52352
 gallbladder, 47480
 hepatic duct, 47400
 kidney, 50060-50081, 50130, 50561, 50580, 52352
 lacrimal, 68530
 pancreas, 48020
 pancreatic duct, 43264
 salivary gland, 42330-42340
 ureter, 50610-50630, 50961, 50980, 51060-51065, 52320-52330, 52352
 urethra, 52310-52315, 52352
 cast, 29700-29715
 cataract, 66982-66984
 catheter
 central venous, 36589
 fractured, 75961
 peritoneal, 49422
 spinal, 62355
 cervical cerclage, 59871
 cerumen, 69210
 contraceptive capsules, 11976-11977
 cranial tongs, 20665
 dacryolith, 68530
 defibrillator, 33241-33244
 drug delivery implant, 11982-11983
 ear wax, 69210
 electrode
 brain, 61535, 61880
 heart, 33238
 nerve, 64585
 spinal, 63660
 stomach, 0156T, 0158T, 43648, 43882
 device
 cardiac event recorder, 33284
 central venous catheter, 36589
 contraceptive capsules, 11976-11977
 cranial tongs, 20665
 defibrillator, 33241-33244
 drug delivery implant, 11982-11983
 electrodes, neurostimulator, 0156T, 0158T, 43648, 43882, 61880, 63660, 64585
 external fixation, 20694
 fixation, 20670-20680
 fractured catheter, 75961
 gastric restriction, 43772-43774

Removal – continued

device — **continued**
 halo, 20665
 hearing aid, 69711
 infusion pump, 36262, 36590, 62365
 intervertebral disc, artificial, 0095T, 22864
 intra-aortic balloon assist, 33968, 33971, 33974
 peritoneal catheter, 49422
 ocular implant, 65175
 pacemaker, 33233-33237
 pulse generator/receiver, 61888, 63688, 64595
 sling, 53442, 57287
 spinal catheter, 62355
 spinal instrumentation, 22850, 22852-22855
 stent, 43269, 50382-50387, 52310-52315
 subcutaneous port, 43887-43888
 tube, 50389, 69424
 venous access device, 36590
 ventricular assist, 33977-33978, 33980
 eye, 65091-65114
 implant, 65175
 foreign body, 65205-65265
 fallopian tube
 bilateral, 58700-58720, 58950-58956
 ectopic pregnancy, 59120
 partial/total, 58661, 58700-58720
 with radical hysterectomy, 58210, 58548
 with supracervical hysterectomy, 58180, 58542, 58544
 with total hysterectomy, 58150-58152, 58200, 58240, 58571, 58573
 with vaginal hysterectomy, 58262-58263, 58291-58292, 58552, 58554
 fat, 15876-15879
 fecal impaction, 45915
 fibrin deposit, 32150
 foreign body
 anus, 46608
 ankle, 27610, 27620
 arm, 24200-24201, 25248
 ear canal, 69200-69205
 bile duct, 43269
 bladder, 52310-52315
 brain, 61570, 62163
 bronchi, 31635
 colon, 44025, 44390, 45332, 45379
 conjunctivus, 65210
 cornea, 65220-65222
 duodenum, 44010
 elbow, 24000, 24101, 24200-24201
 esophagus, 43020, 43045, 43215, 74235
 eye, 65205-65265
 eyelid, 67938
 finger, 26075-26080
 foot, 28190-28193
 gastrointestinal, 43247
 gums, 41805
 hand, 26070
 hip, 27033, 27086-27087
 intertarsal joint, 28020
 intestines, 44020, 44363
 kidney, 50561, 50580
 knee, 27310, 27331, 27372
 lacrimal, 68530
 larynx, 31511, 31530-31531, 31577
 leg, 27372
 lung, 32151
 mandible, 41806
 mediastinum, 39000-39010
 metatarsophalangeal joint, 28022
 mouth, 40804-40805
 muscle, 20520-20525
 nose, 30300-30320

Removal – continued

foreign body — **continued**
 orbit, 61334, 67413, 67430
 pancreatic duct, 43269
 pelvis, 27086-27087
 penis, 54115
 pericardium, 32658, 33020
 peritoneum, 49402
 pharynx, 42809
 pleura, 32150-32151, 32653
 rectum, 45307, 45915
 scrotum, 55120
 shoulder, 23040-23044, 23330-23332
 skin, 11010-11012
 stomach, 43500
 subcutaneous tissue, 10120-10121, 11010-11012
 tarsometatarsal joint, 28020
 tendon sheath, 20520-20525
 toe, 28022-28024
 ureter, 50961, 50980
 urethra, 52310-52315
 uterus, 58562
 vagina, 57415
 wrist, 25040, 25101, 25248
 gastric restriction device, 43772-43774
 graft
 intestine, 44137
 hair, 17380
 halo, 20665
 hearing aid, 69711
 hematoma, brain, 61312-61315
 anesthesia, 00211
 implant
 mammary, 19328-19330
 ocular, 65175, 65920
 orbital, 67560
 infusion pump
 intra-arterial, 36262
 intravenous, 36590
 spinal cord, 62365
 intervertebral disc, artificial
 cervical, 0095T, 22864
 lumbar, 22865, 0164T
 intra-aortic balloon, 33968, 33971, 33974
 intestine
 allograft, 44137
 lacrimal
 calculus, 68530
 gland, 68500-68505
 sac, 68520
 laryngocele, 31300
 leiomyomata, 58561
 intramural, 58545-58546
 lens, 66840-66852, 66920-66940
 loose body, joint
 ankle, 27620
 carpometacarpal, 26070
 elbow, 24101
 interphalangeal, 28024
 intertarsal, 28020
 knee, 27331
 metatarsophalangeal, 28022
 tarsometatarsal, 28020
 wrist, 25101
 lung
 apical tumor, 32503-32504
 cyst, 32140
 extrapleural, 32445
 one lobe, 32480
 one segment, 32484
 sleeve lobectomy, 32486
 sleeve pneumonectomy, 32488
 total pneumonectomy, 32440-32445
 two lobes, 32482
 volume reduction, 32491
 wedge, 32500
 lymph nodes
 abdominal, 38747
 inguinofemoral, 38760-38765
 pelvic, 38770
 retroperitoneal, 38746, 38780
 mastoid cell, 69670
 mesh, 11008
 nails, 11750-11752

Removal – continued

neurostimulator
 electrodes, 0156T, 0158T, 43648, 43882, 61880, 63660, 64585
 pulse generator/receiver, 61888, 63688, 64595
 ovary(ies)
 bilateral/unilateral, 58940-58943, 58950-58956
 ectopic pregnancy, 59120
 laparoscopic, 58542, 58544, 58548, 58552, 58554, 58571, 58573
 partial/total, 58661, 58940-58940
 radical hysterectomy, 58210, 58548
 supracervical hysterectomy, 58180, 58542, 58544
 total hysterectomy, 58150-58152, 58200, 58240, 58571, 58573
 vaginal hysterectomy, 58262-58263, 58291-58292, 58552, 58554
 pacemaker, 33233-33237
 polyp
 anal, 46610-46612
 colon, 44392, 45333, 45385
 esophagus, 43217, 43250
 gastrointestinal, 43250-43251
 rectum, 45315
 sphenoid sinus, 31051
 prosthesis
 abdominal, 11008, 49606
 hip, 27090-27091
 knee, 27488
 penis, 54406, 54410-54417
 perineal, 53442
 skull, 62142
 urethral sphincter, 53446-53447
 wrist, 25250-25251
 pulse generator/receiver
 cranial, 61888
 gastric, 64595
 peripheral, 64595
 spinal, 63688
 shunt
 brain, 62256-62258
 heart, 33924
 peritoneum, 49429
 spinal, 63746
 skin tags, 11200-11201
 sling
 urethral, 53442
 vaginal, 57287
 spinal instrumentation, 22850, 22852-22855
 stent
 biliary/pancreatic, 43269
 ureteral, 50382-50387
 urethral, 52310-52315
 subcutaneous port, 43887-43888
 tube
 ear, 69424
 hand, 26392, 26416
 nephrostomy, 50389
 varicose veins, 37765-37766
 venous access device, 36590
 obstruction, 75901-75902
 ventricular assist device, 33977-33978, 33980
 vitreous, 67005-67010
 wire, 46754
Renal
 ablation, 50541
 artery
 aneurysm, 35121-35122
 angiography, 75722-75724
 angioplasty, 35450
 atherectomy, 0234T-0235T
 bypass, 35535-35536, 35560, 35631-35636
 embolectomy, 34151
 thromboendarterectomy, 35341
 aspiration, 50390
 autotransplantation, 50380
 biopsy
 brush, 52007

Renal – continued

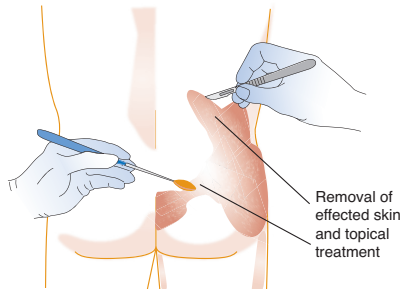
calculus, 50060-50081, 50130, 50561, 50580, 52352
 dialysis, 90938-90938, 90963-90970
 end-stage, 90951-90962
 excision
 cyst, 50280-50290
 graft
 bypass, 35535-35536, 35560, 35631-35636
 incision and drainage, 50020-50021
 injection, 50390
 removal
 autograft, 50370
 calculus, 50060-50081, 50130, 50561, 50580, 52352
 risk factor, 1008F
 transplantation
 allograft prep, 50323-50329
 donor nephrectomy, 50300-50320, 50547
 implant, 50360
 recipient nephrectomy, 50340, 50365
 removal autograft, 50370
 x-ray, 74470
Renin, 80408, 80416-80417, 84244
 converting enzyme, 82164
Reoperation
 bypass
 coronary artery, 33530
 distal vessel, 35700
 thromboendarterectomy, 35390
Repair
 abdomen
 hernia
 epigastric, 49570-49572
 femoral, 49550-49557
 incisional, 49560-49566
 mesh, 49568, 49654-49657
 inguinal, 49491-49525
 laproscopic, 49650-49651
 lumbar, 49540
 spigelian, 49590
 umbilical, 49580-49587, 49652-49653
 ventral, 49560-49566
 mesh, 49568
 omphalocele, 49600-49611
 suture, 49900
 wall, 15830, 15847
 anal
 cloacal anomaly, 46744-46748
 fistula, 0170T, 46288, 46706
 anoperineal, 46715-46716
 ileoanal pouch fistula/sinus, 46710-46712
 rectourethral, 46740
 graft, 46753
 imperforate anus, 46715-46742
 sphincteroplasty, 46750-46751, 46760-46762
 stricture, 46700-46705
 ankle
 dislocation, 27846-27848
 ligament, 27695-27698
 tendon, 27650-27654, 27680-27687
 lengthening, 27612, 27685-27686
 ligament, 27695-27698
 tenolysis, 27680-27681
 union, 27722-27726
 aorta, 33320-33322
 abdominal, 0078T-0081T, 35081-35103
 aneurysm, 0078T-0081T
 infrarenal, 34800-34805, 34825-34832
 thoracic, 33877
 arch, 33852-33853
 artery, 35452, 35472
 coarctation, 33851

11000 Debridement of extensive eczematous or infected skin; up to 10% of body surface P 3 I

| RVU | | Global Days | | | Modifiers | | | | |
|---------------|-----------|-------------|----|----|-----------|---|--|--|--|
| Non-Fac Total | Fac Total | 50 | 51 | 62 | 80 | | | | |
| 1.53 | 0.87 | 000 | 0 | 2 | 0 | 1 | | | |

AMA: May 1999:10

Debridement of extensive eczematous or infected skin



Up to 10% of body surface (11000); each additional 10% of the body surface (11001)

+ 11001 Debridement of extensive eczematous or infected skin; each additional 10% of the body surface, or part thereof (List separately in addition to code for primary procedure) P 3 I

| RVU | | Global Days | | | Modifiers | | | | |
|---------------|-----------|-------------|----|----|-----------|---|--|--|--|
| Non-Fac Total | Fac Total | 50 | 51 | 62 | 80 | | | | |
| 0.62 | 0.44 | ZZZ | 0 | 0 | 0 | 1 | | | |

AMA: May 1999:10

11004 Debridement of skin, subcutaneous tissue, muscle and fascia for necrotizing soft tissue infection; external genitalia and perineum C

| RVU | | Global Days | | | Modifiers | | | | |
|---------------|-----------|-------------|----|----|-----------|---|--|--|--|
| Non-Fac Total | Fac Total | 50 | 51 | 62 | 80 | | | | |
| 17.24 | 17.24 | 000 | 0 | 2 | 0 | 1 | | | |

11005 Debridement of skin, subcutaneous tissue, muscle and fascia for necrotizing soft tissue infection; abdominal wall, with or without fascial closure C

| RVU | | Global Days | | | Modifiers | | | | |
|---------------|-----------|-------------|----|----|-----------|---|--|--|--|
| Non-Fac Total | Fac Total | 50 | 51 | 62 | 80 | | | | |
| 23.09 | 23.09 | 000 | 0 | 0 | 0 | 0 | | | |

11006 Debridement of skin, subcutaneous tissue, muscle and fascia for necrotizing soft tissue infection; external genitalia, perineum and abdominal wall, with or without fascial closure C

| RVU | | Global Days | | | Modifiers | | | | |
|---------------|-----------|-------------|----|----|-----------|---|--|--|--|
| Non-Fac Total | Fac Total | 50 | 51 | 62 | 80 | | | | |
| 21.03 | 21.03 | 000 | 0 | 2 | 0 | 1 | | | |

+ 11008 Removal of prosthetic material or mesh, abdominal wall for infection (eg, for chronic or recurrent mesh infection or necrotizing soft tissue infection) (List separately in addition to code for primary procedure) C

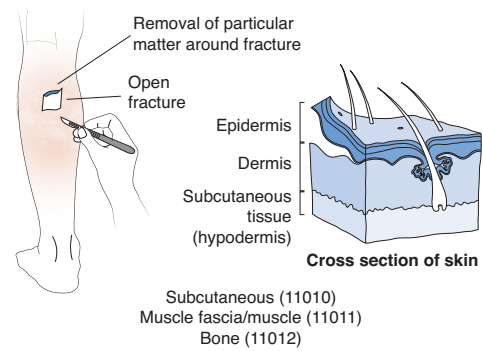
| RVU | | Global Days | | | Modifiers | | | | |
|---------------|-----------|-------------|----|----|-----------|---|--|--|--|
| Non-Fac Total | Fac Total | 50 | 51 | 62 | 80 | | | | |
| 8.12 | 8.12 | ZZZ | 0 | 0 | 0 | 0 | | | |

▲ 11010 Debridement including removal of foreign material at the site of an open fracture and/or an open dislocation (eg, excisional debridement); skin and subcutaneous tissues A 2 I

| RVU | | Global Days | | | Modifiers | | | | |
|---------------|-----------|-------------|----|----|-----------|---|--|--|--|
| Non-Fac Total | Fac Total | 50 | 51 | 62 | 80 | | | | |
| 13.89 | 8.23 | 010 | 2 | 2 | 0 | 1 | | | |

AMA: Mar 1997:2, Apr 1997:10, Aug 1997:6, Oct 2003:10

Debridement including removal of foreign material associated with open fracture(s)/dislocation(s)



▲ 11011 Debridement including removal of foreign material at the site of an open fracture and/or an open dislocation (eg, excisional debridement); skin, subcutaneous tissue, muscle fascia, and muscle A 2 I

| RVU | | Global Days | | | Modifiers | | | | |
|---------------|-----------|-------------|----|----|-----------|---|--|--|--|
| Non-Fac Total | Fac Total | 50 | 51 | 62 | 80 | | | | |
| 15.25 | 8.84 | 000 | 2 | 2 | 0 | 1 | | | |

AMA: Mar 1997:2, Apr 1997:10, Aug 1997:6

▲ 11012 Debridement including removal of foreign material at the site of an open fracture and/or an open dislocation (eg, excisional debridement); skin, subcutaneous tissue, muscle fascia, muscle, and bone A 2 I

| RVU | | Global Days | | | Modifiers | | | | |
|---------------|-----------|-------------|----|----|-----------|---|--|--|--|
| Non-Fac Total | Fac Total | 50 | 51 | 62 | 80 | | | | |
| 20.45 | 12.63 | 000 | 2 | 2 | 0 | 1 | | | |

AMA: Mar 1997:2, Apr 1997:10, Aug 1997:6, Oct 2003:10

× 11040 Debridement, skin, partial thickness

× 11041 Debridement, skin, full thickness

▲ 11042 Debridement, subcutaneous tissue (includes epidermis and dermis, if performed); first 20 sq cm or less A 2 I PQR

Coding Tip

Do not report together with 53448, 54411, 54417, 97602

| RVU | | Global Days | | | Modifiers | | | | |
|---------------|-----------|-------------|----|----|-----------|---|--|--|--|
| Non-Fac Total | Fac Total | 50 | 51 | 62 | 80 | | | | |
| 2.56 | 1.40 | 000 | 0 | 2 | 0 | 1 | | | |

AMA: Winter 1992:10, May 1996:6, Feb 1997:7, Aug 1997:6, Jun 2005:1, 10, Oct 2007:15

- ▲ 11043 Debridement, muscle and/or fascia (includes epidermis, dermis, and subcutaneous tissue, if performed); first 20 sq cm or less A2 T PQR

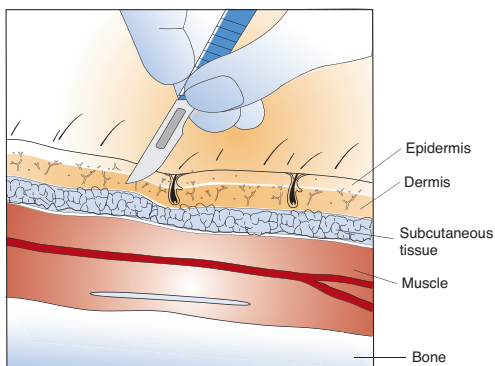
Coding Tip

Do not report together with 53448, 54411, 54417, 97602

| RVU | | Global Days | | | | Modifiers | | | |
|---------------|-----------|-------------|----|----|----|-----------|----|----|----|
| Non-Fac Total | Fac Total | 50 | 51 | 62 | 80 | 50 | 51 | 62 | 80 |
| 5.63 | 3.61 | 000 | 0 | 2 | 0 | 1 | | | |

AMA: May 1996:6, Feb 1997:7, Apr 1997:11, Aug 1997:6, Dec 99:10, Jun 2005:1, 10, Oct 2007:15

Debridement



Subcutaneous tissue (11042, 11045); subcutaneous tissue, muscle and/or fascia (11043, 11046); subcutaneous tissue, muscle and/or fascia, bone (11044, 11047)

- ▲ 11044 Debridement, bone (includes epidermis, dermis, subcutaneous tissue, muscle and/or fascia, if performed); first 20 sq cm or less A2 T PQR

| RVU | | Global Days | | | | Modifiers | | | |
|---------------|-----------|-------------|----|----|----|-----------|----|----|----|
| Non-Fac Total | Fac Total | 50 | 51 | 62 | 80 | 50 | 51 | 62 | 80 |
| 8.56 | 6.25 | 000 | 0 | 2 | 0 | 1 | | | |

AMA: Fall 1993:21, Mar 1996:10, May 1995:6, Feb 1997:7, Apr 1997:11, Aug 1997:6, Jun 2005:1, 10, Oct 2007:15

- + 11045 Debridement, subcutaneous tissue (includes epidermis and dermis, if performed); each additional 20 sq cm, or part thereof (List separately in addition to code for primary procedure) G2 T

| RVU | | Global Days | | | | Modifiers | | | |
|---------------|-----------|-------------|----|----|----|-----------|----|----|----|
| Non-Fac Total | Fac Total | 50 | 51 | 62 | 80 | 50 | 51 | 62 | 80 |
| 0.91 | 0.53 | ZZZ | 0 | 0 | 0 | 0 | | | |

- + 11046 Debridement, muscle and/or fascia (includes epidermis, dermis, and subcutaneous tissue, if performed); each additional 20 sq cm, or part thereof (List separately in addition to code for primary procedure) G2 T

| RVU | | Global Days | | | | Modifiers | | | |
|---------------|-----------|-------------|----|----|----|-----------|----|----|----|
| Non-Fac Total | Fac Total | 50 | 51 | 62 | 80 | 50 | 51 | 62 | 80 |
| 1.59 | 1.13 | ZZZ | 0 | 0 | 0 | 0 | | | |

- + 11047 Debridement, bone (includes epidermis, dermis, subcutaneous tissue, muscle and/or fascia, if performed); each additional 20 sq cm, or part thereof (List separately in addition to code for primary procedure) G2 T

| RVU | | Global Days | | | | Modifiers | | | |
|---------------|-----------|-------------|----|----|----|-----------|----|----|----|
| Non-Fac Total | Fac Total | 50 | 51 | 62 | 80 | 50 | 51 | 62 | 80 |
| 2.61 | 1.96 | ZZZ | 0 | 0 | 0 | 0 | | | |

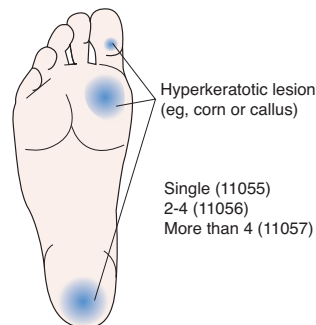
Paring/Cutting Procedures

- 11055 Paring or cutting of benign hyperkeratotic lesion (eg, corn or callus); single lesion P3 T PQR

| RVU | | Global Days | | | | Modifiers | | | |
|---------------|-----------|-------------|----|----|----|-----------|----|----|----|
| Non-Fac Total | Fac Total | 50 | 51 | 62 | 80 | 50 | 51 | 62 | 80 |
| 1.41 | 0.60 | 000 | 0 | 2 | 0 | 1 | | | |

AMA: Nov 1997:11, Jan 1999:11

Paring or cutting of benign hyperkeratotic lesion (eg, corn or callus); single lesion



A benign skin lesion is sliced away.

- 11056 Paring or cutting of benign hyperkeratotic lesion (eg, corn or callus); 2 to 4 lesions P3 T PQR

| RVU | | Global Days | | | | Modifiers | | | |
|---------------|-----------|-------------|----|----|----|-----------|----|----|----|
| Non-Fac Total | Fac Total | 50 | 51 | 62 | 80 | 50 | 51 | 62 | 80 |
| 1.69 | 0.85 | 000 | 0 | 2 | 0 | 1 | | | |

AMA: Nov 1997:11, Jan 1999:11

- 11057 Paring or cutting of benign hyperkeratotic lesion (eg, corn or callus); more than 4 lesions P3 T PQR

| RVU | | Global Days | | | | Modifiers | | | |
|---------------|-----------|-------------|----|----|----|-----------|----|----|----|
| Non-Fac Total | Fac Total | 50 | 51 | 62 | 80 | 50 | 51 | 62 | 80 |
| 2.01 | 1.10 | 000 | 0 | 2 | 0 | 1 | | | |

AMA: Nov 1997:11, Jan 1999:11, May 1999:10

Biopsy Procedures

- 11100 Biopsy of skin, subcutaneous tissue and/or mucous membrane (including simple closure), unless otherwise listed; single lesion P3 T

| RVU | | Global Days | | | | Modifiers | | | |
|---------------|-----------|-------------|----|----|----|-----------|----|----|----|
| Non-Fac Total | Fac Total | 50 | 51 | 62 | 80 | 50 | 51 | 62 | 80 |
| 3.02 | 1.46 | 000 | 0 | 2 | 0 | 1 | | | |

AMA: Fall 1994:20, Jun 1997:12, Apr 2000:7, Nov 2002:6, Jul 2004:5, Oct 2004:4, Nov 02:6, Feb 08:1

- + 11101 Biopsy of skin, subcutaneous tissue and/or mucous membrane (including simple closure), unless otherwise listed; each separate/additional lesion (List separately in addition to code for primary procedure) P3 T

| RVU | | Global Days | | | | Modifiers | | | |
|---------------|-----------|-------------|----|----|----|-----------|----|----|----|
| Non-Fac Total | Fac Total | 50 | 51 | 62 | 80 | 50 | 51 | 62 | 80 |
| 0.96 | 0.74 | ZZZ | 0 | 0 | 0 | 1 | | | |

AMA: Fall 1994:20, Jun 1997:12, Apr 2000:7, Nov 2002:6, Jul 2004:5, Oct 2004:4, Nov 02:6, Feb 08:1

32906 Thoracoplasty, Schede type or extrapleural (all stages); with closure of bronchopleural fistula C PQR

| RVU | | Global Days | Modifiers | | | |
|---------------|-----------|-------------|-----------|----|----|----|
| Non-Fac Total | Fac Total | | 50 | 51 | 62 | 80 |
| 50.36 | 50.36 | 090 | 0 | 2 | 1 | 2 |

32940 Pneumonolysis, extraperiosteal, including filling or packing procedures C PQR

| RVU | | Global Days | Modifiers | | | |
|---------------|-----------|-------------|-----------|----|----|----|
| Non-Fac Total | Fac Total | | 50 | 51 | 62 | 80 |
| 37.47 | 37.47 | 090 | 0 | 2 | 1 | 2 |

32960 Pneumothorax, therapeutic, intrapleural injection of air G2 I

| RVU | | Global Days | Modifiers | | | |
|---------------|-----------|-------------|-----------|----|----|----|
| Non-Fac Total | Fac Total | | 50 | 51 | 62 | 80 |
| 4.18 | 3.12 | 000 | 0 | 2 | 0 | 1 |

Other Lung/Pleural Procedures

32997 Total lung lavage (unilateral) C

| RVU | | Global Days | Modifiers | | | |
|---------------|-----------|-------------|-----------|----|----|----|
| Non-Fac Total | Fac Total | | 50 | 51 | 62 | 80 |
| 10.58 | 10.58 | 000 | 0 | 2 | 0 | 1 |

AMA: Nov 1998:13, Nov 1999:14

32998 Ablation therapy for reduction or eradication of 1 or more pulmonary tumor(s) including pleura or chest wall when involved by tumor extension, percutaneous, radiofrequency, unilateral G2 I

| RVU | | Global Days | Modifiers | | | |
|---------------|-----------|-------------|-----------|----|----|----|
| Non-Fac Total | Fac Total | | 50 | 51 | 62 | 80 |
| 85.32 | 8.83 | 000 | 0 | 2 | 0 | 2 |

32999 Unlisted procedure, lungs and pleura I X

| RVU | | Global Days | Modifiers | | | |
|---------------|-----------|-------------|-----------|----|----|----|
| Non-Fac Total | Fac Total | | 50 | 51 | 62 | 80 |
| 0.00 | 0.00 | YYY | 0 | 2 | 1 | 1 |

AMA: Jan 2002:11, Feb 2002:11, Jul 2008:10, Apr 2010:10

Cardiovascular Procedures

Heart/Pericardial Procedures

Pericardial Procedures

○ 33010 Pericardiocentesis; initial A2 I

| RVU | | Global Days | Modifiers | | | |
|---------------|-----------|-------------|-----------|----|----|----|
| Non-Fac Total | Fac Total | | 50 | 51 | 62 | 80 |
| 3.72 | 3.72 | 000 | 0 | 2 | 0 | 1 |

○ 33011 Pericardiocentesis; subsequent A2 I

| RVU | | Global Days | Modifiers | | | |
|---------------|-----------|-------------|-----------|----|----|----|
| Non-Fac Total | Fac Total | | 50 | 51 | 62 | 80 |
| 3.73 | 3.73 | 000 | 0 | 2 | 0 | 0 |

33015 Tube pericardiostomy C

| RVU | | Global Days | Modifiers | | | |
|---------------|-----------|-------------|-----------|----|----|----|
| Non-Fac Total | Fac Total | | 50 | 51 | 62 | 80 |
| 15.83 | 15.83 | 090 | 0 | 2 | 0 | 1 |

33020 Pericardiotomy for removal of clot or foreign body (primary procedure) C PQR

| RVU | | Global Days | Modifiers | | | |
|---------------|-----------|-------------|-----------|----|----|----|
| Non-Fac Total | Fac Total | | 50 | 51 | 62 | 80 |
| 26.73 | 26.73 | 090 | 0 | 2 | 1 | 2 |

33025 Creation of pericardial window or partial resection for drainage C PQR

| RVU | | Global Days | Modifiers | | | |
|---------------|-----------|-------------|-----------|----|----|----|
| Non-Fac Total | Fac Total | | 50 | 51 | 62 | 80 |
| 24.47 | 24.47 | 090 | 0 | 2 | 1 | 2 |

33030 Pericardiectomy, subtotal or complete; without cardiopulmonary bypass C PQR

| RVU | | Global Days | Modifiers | | | |
|---------------|-----------|-------------|-----------|----|----|----|
| Non-Fac Total | Fac Total | | 50 | 51 | 62 | 80 |
| 39.41 | 39.41 | 090 | 0 | 2 | 1 | 2 |

33031 Pericardiectomy, subtotal or complete; with cardiopulmonary bypass C PQR

| RVU | | Global Days | Modifiers | | | |
|---------------|-----------|-------------|-----------|----|----|----|
| Non-Fac Total | Fac Total | | 50 | 51 | 62 | 80 |
| 43.88 | 43.88 | 090 | 0 | 2 | 1 | 2 |

33050 Excision of pericardial cyst or tumor C PQR

| RVU | | Global Days | Modifiers | | | |
|---------------|-----------|-------------|-----------|----|----|----|
| Non-Fac Total | Fac Total | | 50 | 51 | 62 | 80 |
| 30.58 | 30.58 | 090 | 0 | 2 | 1 | 2 |

33120 Excision of intracardiac tumor, resection with cardiopulmonary bypass C PQR

| RVU | | Global Days | Modifiers | | | |
|---------------|-----------|-------------|-----------|----|----|----|
| Non-Fac Total | Fac Total | | 50 | 51 | 62 | 80 |
| 47.69 | 47.69 | 090 | 0 | 2 | 1 | 2 |

AMA: Mar 2007:1

33130 Resection of external cardiac tumor C PQR

| RVU | | Global Days | Modifiers | | | |
|---------------|-----------|-------------|-----------|----|----|----|
| Non-Fac Total | Fac Total | | 50 | 51 | 62 | 80 |
| 42.47 | 42.47 | 090 | 0 | 2 | 1 | 2 |

AMA: Mar 2007:1

Transmyocardial Laser Revascularization

33140 Transmyocardial laser revascularization, by thoracotomy; (separate procedure) C PQR

| RVU | | Global Days | Modifiers | | | |
|---------------|-----------|-------------|-----------|----|----|----|
| Non-Fac Total | Fac Total | | 50 | 51 | 62 | 80 |
| 48.85 | 48.85 | 090 | 0 | 2 | 0 | 2 |

AMA: Nov 1999:14, Nov 2000:5, Apr 2001:7

Pub 100-3, 1, 140.5; 100-3, 1, 20.6

+ 33141 Transmyocardial laser revascularization, by thoracotomy; performed at the time of other open cardiac procedure(s) (List separately in addition to code for primary procedure) C PQR

| RVU | | Global Days | Modifiers | | | |
|---------------|-----------|-------------|-----------|----|----|----|
| Non-Fac Total | Fac Total | | 50 | 51 | 62 | 80 |
| 4.24 | 4.24 | ZZZ | 0 | 0 | 1 | 2 |

AMA: Apr 2001:7

Pub 100-3, 1, 140.5; 100-3, 1, 20.6

Pacemaker/Cardioverter-Defibrillator Insertion/Revision/Removal

Coding Guidance

Placing catheters intravascularly into coronary vessels or chambers of the heart is often necessary for pacemaker/pacing cardioverter defibrillator procedures. Cardiac or selective catheterization codes should not be reported with these procedures. A separately reported cardiac catheterization code may be used when it is medically needed and performed as a distinct service on the same day or different patient encounter. Fluoroscopy and ultrasound are not reportable with the procedures described in 33202-33249.

33202 Insertion of epicardial electrode(s); open incision (eg, thoracotomy, median sternotomy, subxiphoid approach) C PQR

| RVU | | Global Days | | Modifiers | | | |
|---------------|-----------|-------------|--|-----------|----|----|----|
| Non-Fac Total | Fac Total | | | 50 | 51 | 62 | 80 |
| 23.78 | 23.78 | 090 | | 0 | 2 | 0 | 1 |

Pub 100-3, 1, 20.8

33203 Insertion of epicardial electrode(s); endoscopic approach (eg, thoracoscopy, pericardioscopy) C PQR

| RVU | | Global Days | | Modifiers | | | |
|---------------|-----------|-------------|--|-----------|----|----|----|
| Non-Fac Total | Fac Total | | | 50 | 51 | 62 | 80 |
| 24.95 | 24.95 | 090 | | 0 | 2 | 0 | 1 |

Pub 100-3, 1, 20.8

○ **33206** Insertion or replacement of permanent pacemaker with transvenous electrode(s); atrial J 8 T PQR

| RVU | | Global Days | | Modifiers | | | |
|---------------|-----------|-------------|--|-----------|----|----|----|
| Non-Fac Total | Fac Total | | | 50 | 51 | 62 | 80 |
| 14.23 | 14.23 | 090 | | 0 | 2 | 2 | 1 |

AMA: Summer 1994:10,17, Oct 1996:9, Nov 1999:15, Jun 2008:14

Pub 100-3, 1, 20.8

○ **33207** Insertion or replacement of permanent pacemaker with transvenous electrode(s); ventricular J 8 T PQR

| RVU | | Global Days | | Modifiers | | | |
|---------------|-----------|-------------|--|-----------|----|----|----|
| Non-Fac Total | Fac Total | | | 50 | 51 | 62 | 80 |
| 15.16 | 15.16 | 090 | | 0 | 2 | 2 | 1 |

AMA: Summer 1994:10,17, Oct 1996:9, Nov 1999:15, Jun 2008:14

Pub 100-3, 1, 20.8

○ **33208** Insertion or replacement of permanent pacemaker with transvenous electrode(s); atrial and ventricular J 8 T PQR

| RVU | | Global Days | | Modifiers | | | |
|---------------|-----------|-------------|--|-----------|----|----|----|
| Non-Fac Total | Fac Total | | | 50 | 51 | 62 | 80 |
| 16.37 | 16.37 | 090 | | 0 | 2 | 2 | 1 |

AMA: Summer 1994:10,17, Jul 1996:10, Nov 1999:15, Jun 2008:14

Pub 100-3, 1, 20.8

○ **33210** Insertion or replacement of temporary transvenous single chamber cardiac electrode or pacemaker catheter (separate procedure) G2 T

| RVU | | Global Days | | Modifiers | | | |
|---------------|-----------|-------------|--|-----------|----|----|----|
| Non-Fac Total | Fac Total | | | 50 | 51 | 62 | 80 |
| 5.62 | 5.62 | 000 | | 0 | 2 | 0 | 1 |

AMA: Summer 1994:10,17, Mar 2007:1

Pub 100-3, 1, 20.8

○ **33211** Insertion or replacement of temporary transvenous dual chamber pacing electrodes (separate procedure) G2 T

| RVU | | Global Days | | Modifiers | | | |
|---------------|-----------|-------------|--|-----------|----|----|----|
| Non-Fac Total | Fac Total | | | 50 | 51 | 62 | 80 |
| 5.70 | 5.70 | 000 | | 0 | 2 | 0 | 1 |

AMA: Summer 1994:10,17, Mar 2007:1

Pub 100-3, 1, 20.8

○ **33212** Insertion or replacement of pacemaker pulse generator only; single chamber, atrial or ventricular H 8 T PQR

| RVU | | Global Days | | Modifiers | | | |
|---------------|-----------|-------------|--|-----------|----|----|----|
| Non-Fac Total | Fac Total | | | 50 | 51 | 62 | 80 |
| 10.54 | 10.54 | 090 | | 0 | 2 | 0 | 1 |

AMA: Summer 1994:10,18, Fall 1994:24, May 2004:15, Jun 2008:14

Pub 100-3, 1, 20.8

○ **33213** Insertion or replacement of pacemaker pulse generator only; dual chamber H 8 T PQR

| RVU | | Global Days | | Modifiers | | | |
|---------------|-----------|-------------|--|-----------|----|----|----|
| Non-Fac Total | Fac Total | | | 50 | 51 | 62 | 80 |
| 12.03 | 12.03 | 090 | | 0 | 2 | 0 | 1 |

AMA: Summer 1994:10,18, Oct 1996:10, Feb 1998:11

Pub 100-3, 1, 20.8

○ **33214** Upgrade of implanted pacemaker system, conversion of single chamber system to dual chamber system (includes removal of previously placed pulse generator, testing of existing lead, insertion of new lead, insertion of new pulse generator) J 8 T PQR

| RVU | | Global Days | | Modifiers | | | |
|---------------|-----------|-------------|--|-----------|----|----|----|
| Non-Fac Total | Fac Total | | | 50 | 51 | 62 | 80 |
| 15.02 | 15.02 | 090 | | 0 | 2 | 2 | 0 |

AMA: Summer 1994:10,18, Fall 1994:24, Jun 2008:14

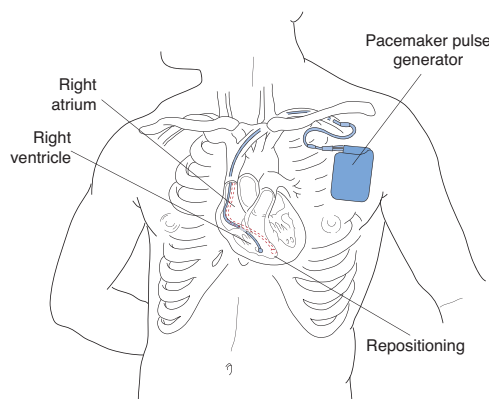
Pub 100-3, 1, 20.8

33215 Repositioning of previously implanted transvenous pacemaker or pacing cardioverter-defibrillator (right atrial or right ventricular) electrode G2 T PQR

| RVU | | Global Days | | Modifiers | | | |
|---------------|-----------|-------------|--|-----------|----|----|----|
| Non-Fac Total | Fac Total | | | 50 | 51 | 62 | 80 |
| 9.51 | 9.51 | 090 | | 0 | 2 | 0 | 1 |

Pub 100-3, 1, 20.8

Repositioning of implanted transvenous pacemaker/defibrillator electrode



An already existing wire of a permanent pacemaker or internal defibrillator is repositioned in the right atrium or the right ventricle.

○ **33216** Insertion of a single transvenous electrode, permanent pacemaker or cardioverter-defibrillator G2 T PQR

| RVU | | Global Days | | Modifiers | | | |
|---------------|-----------|-------------|--|-----------|----|----|----|
| Non-Fac Total | Fac Total | | | 50 | 51 | 62 | 80 |
| 11.76 | 11.76 | 090 | | 0 | 2 | 0 | 1 |

AMA: Summer 1994:10, 18, Jul 1996:10, Nov 1999:15-16

Pub 100-3, 1, 20.8

45113 Proctectomy, partial, with rectal mucosectomy, ileoanal anastomosis, creation of ileal reservoir (S or J), with or without loop ileostomy C PQR

| RVU | | Global Days | | Modifiers | | | |
|---------------|-----------|-------------|----|-----------|----|---|--|
| Non-Fac Total | Fac Total | 50 | 51 | 62 | 80 | | |
| 57.36 | 57.36 | 090 | 0 | 2 | 1 | 2 | |

45114 Proctectomy, partial, with anastomosis; abdominal and transsacral approach C PQR

| RVU | | Global Days | | Modifiers | | | |
|---------------|-----------|-------------|----|-----------|----|---|--|
| Non-Fac Total | Fac Total | 50 | 51 | 62 | 80 | | |
| 52.44 | 52.44 | 090 | 0 | 2 | 1 | 2 | |

45116 Proctectomy, partial, with anastomosis; transsacral approach only (Kraske type) C PQR

| RVU | | Global Days | | Modifiers | | | |
|---------------|-----------|-------------|----|-----------|----|---|--|
| Non-Fac Total | Fac Total | 50 | 51 | 62 | 80 | | |
| 45.45 | 45.45 | 090 | 0 | 2 | 1 | 2 | |

45119 Proctectomy, combined abdominoperineal pull-through procedure (eg, colo-anal anastomosis), with creation of colonic reservoir (eg, J-pouch), with diverting enterostomy when performed C PQR

| RVU | | Global Days | | Modifiers | | | |
|---------------|-----------|-------------|----|-----------|----|---|--|
| Non-Fac Total | Fac Total | 50 | 51 | 62 | 80 | | |
| 56.50 | 56.50 | 090 | 0 | 2 | 1 | 2 | |

AMA: Nov 1997:18, Apr 2006:1

45120 Proctectomy, complete (for congenital megacolon), abdominal and perineal approach; with pull-through procedure and anastomosis (eg, Swenson, Duhamel, or Soave type operation) C PQR

| RVU | | Global Days | | Modifiers | | | |
|---------------|-----------|-------------|----|-----------|----|---|--|
| Non-Fac Total | Fac Total | 50 | 51 | 62 | 80 | | |
| 45.93 | 45.93 | 090 | 0 | 2 | 1 | 2 | |

45121 Proctectomy, complete (for congenital megacolon), abdominal and perineal approach; with subtotal or total colectomy, with multiple biopsies C PQR

| RVU | | Global Days | | Modifiers | | | |
|---------------|-----------|-------------|----|-----------|----|---|--|
| Non-Fac Total | Fac Total | 50 | 51 | 62 | 80 | | |
| 50.17 | 50.17 | 090 | 0 | 2 | 1 | 2 | |

45123 Proctectomy, partial, without anastomosis, perineal approach C PQR

| RVU | | Global Days | | Modifiers | | | |
|---------------|-----------|-------------|----|-----------|----|---|--|
| Non-Fac Total | Fac Total | 50 | 51 | 62 | 80 | | |
| 32.18 | 32.18 | 090 | 0 | 2 | 1 | 2 | |

45126 Pelvic exenteration for colorectal malignancy, with proctectomy (with or without colostomy), with removal of bladder and ureteral transplantations, and/or hysterectomy, or cervicectomy, with or without removal of tube(s), with or without removal of ovary(s), or any combination thereof C PQR

| RVU | | Global Days | | Modifiers | | | |
|---------------|-----------|-------------|----|-----------|----|---|--|
| Non-Fac Total | Fac Total | 50 | 51 | 62 | 80 | | |
| 84.50 | 84.50 | 090 | 0 | 2 | 1 | 2 | |

AMA: Nov 1998:16

45130 Excision of rectal procidentia, with anastomosis; perineal approach C PQR

| RVU | | Global Days | | Modifiers | | | |
|---------------|-----------|-------------|----|-----------|----|---|--|
| Non-Fac Total | Fac Total | 50 | 51 | 62 | 80 | | |
| 31.43 | 31.43 | 090 | 0 | 2 | 1 | 2 | |

45135 Excision of rectal procidentia, with anastomosis; abdominal and perineal approach C PQR

| RVU | | Global Days | | Modifiers | | | |
|---------------|-----------|-------------|----|-----------|----|---|--|
| Non-Fac Total | Fac Total | 50 | 51 | 62 | 80 | | |
| 39.46 | 39.46 | 090 | 0 | 2 | 1 | 2 | |

45136 Excision of ileoanal reservoir with ileostomy C PQR

| RVU | | Global Days | | Modifiers | | | |
|---------------|-----------|-------------|----|-----------|----|---|--|
| Non-Fac Total | Fac Total | 50 | 51 | 62 | 80 | | |
| 52.39 | 52.39 | 090 | 0 | 2 | 1 | 2 | |

45150 Division of stricture of rectum A2 T PQR

| RVU | | Global Days | | Modifiers | | | |
|---------------|-----------|-------------|----|-----------|----|---|--|
| Non-Fac Total | Fac Total | 50 | 51 | 62 | 80 | | |
| 11.42 | 11.42 | 090 | 0 | 2 | 0 | 0 | |

45160 Excision of rectal tumor by proctotomy, transsacral or transcoccygeal approach A2 T PQR

| RVU | | Global Days | | Modifiers | | | |
|---------------|-----------|-------------|----|-----------|----|---|--|
| Non-Fac Total | Fac Total | 50 | 51 | 62 | 80 | | |
| 29.17 | 29.17 | 090 | 0 | 2 | 1 | 2 | |

45171 Excision of rectal tumor, transanal approach; not including muscularis propria (ie, partial thickness) G2 T PQR

| RVU | | Global Days | | Modifiers | | | |
|---------------|-----------|-------------|----|-----------|----|---|--|
| Non-Fac Total | Fac Total | 50 | 51 | 62 | 80 | | |
| 17.70 | 17.70 | 090 | 0 | 2 | 1 | 2 | |

45172 Excision of rectal tumor, transanal approach; including muscularis propria (ie, full thickness) G2 T PQR

| RVU | | Global Days | | Modifiers | | | |
|---------------|-----------|-------------|----|-----------|----|---|--|
| Non-Fac Total | Fac Total | 50 | 51 | 62 | 80 | | |
| 24.16 | 24.16 | 090 | 0 | 2 | 1 | 2 | |

Rectal Destruction Procedures

45190 Destruction of rectal tumor (eg, electrodesiccation, electrosurgery, laser ablation, laser resection, cryosurgery) transanal approach A2 T PQR

Coding Tip

Report for any method used to accomplish destruction of the tumor
Do not code local anesthesia

| RVU | | Global Days | | Modifiers | | | |
|---------------|-----------|-------------|----|-----------|----|---|--|
| Non-Fac Total | Fac Total | 50 | 51 | 62 | 80 | | |
| 19.73 | 19.73 | 090 | 0 | 2 | 1 | 1 | |

Endoscopic Rectal Procedures

Coding Guidance

When a surgical endoscopy directly follows a diagnostic endoscopy, the diagnostic portion is included. When a diagnostic endoscopic service is provided in conjunction with therapeutic endoscopic services, report only the more comprehensive endoscopy code that describes the service. If different therapeutic endoscopic services performed are not adequately described by a comprehensive service code, the appropriate multiple GI endoscopy codes can be used. When an endoscopy is performed to confirm or establish anatomical landmarks as a scout endoscopy, the procedure is not reported separately. When an endoscopy is done as a diagnostic procedure for basing the decision to do a more extensive open surgical procedure, the endoscopy may be separately reported. Control of bleeding resulting from an endoscopy and performed at the time of the service is included. If it becomes necessary to repeat an endoscopy in order to control bleeding, then a procedure code for endoscopic control of bleeding may be reported with a modifier identifying a return to the operative room in the postoperative period.

45300 Proctosigmoidoscopy, rigid; diagnostic, with or without collection of specimen(s) by brushing or washing (separate procedure) P 3 I

Coding Tip

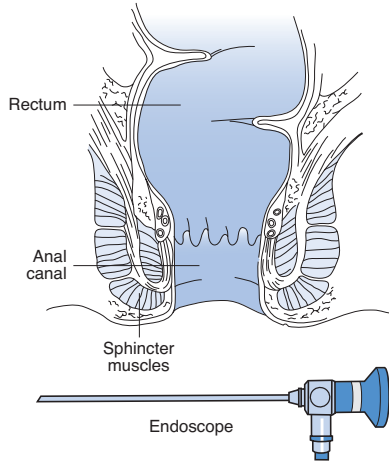
Report this procedure separately only when performed alone, or distinct from other procedures on the same day
Do not report with any surgical proctosigmoidoscopy

| RVU | | Global Days | | | | Modifiers | | | |
|---------------|-----------|-------------|----|----|----|-----------|--|--|--|
| Non-Fac Total | Fac Total | 50 | 51 | 62 | 80 | | | | |
| 3.35 | 1.52 | 000 | 0 | 2 | 0 | 1 | | | |

AMA: Spring 1994:8, Oct 1997:6, Apr 2006:1

Pub 100-3, 1, 100.2

Diagnostic proctosigmoidoscopy, rigid



The physician inserts an endoscope into the rectal cavity up to the sigmoid colon to visualize the mucosa and take cell samples.

45303 Proctosigmoidoscopy, rigid; with dilation (eg, balloon, guide wire, bougie) P 2 I

Coding Tip

Codes 99148-99150 may be reported when a second physician (other than the one performing the procedure) provides moderate sedation in a facility setting only

| RVU | | Global Days | | | | Modifiers | | | |
|---------------|-----------|-------------|----|----|----|-----------|--|--|--|
| Non-Fac Total | Fac Total | 50 | 51 | 62 | 80 | | | | |
| 25.95 | 2.62 | 000 | 0 | 3 | 0 | 1 | | | |

AMA: Spring 1994:8, Oct 1997:6, Apr 2006:1

Pub 100-3, 1, 100.2

45305 Proctosigmoidoscopy, rigid; with biopsy, single or multiple A 2 I

Coding Tip

Do not report more than once for all biopsy specimens taken
Do not report when the entire lesion/tumor/polyp is removed

| RVU | | Global Days | | | | Modifiers | | | |
|---------------|-----------|-------------|----|----|----|-----------|--|--|--|
| Non-Fac Total | Fac Total | 50 | 51 | 62 | 80 | | | | |
| 5.38 | 2.29 | 000 | 0 | 3 | 0 | 1 | | | |

AMA: Spring 1994:8, Oct 1997:6, Apr 2006:1

Pub 100-3, 1, 100.2

45307 Proctosigmoidoscopy, rigid; with removal of foreign body A 2 I

| RVU | | Global Days | | | | Modifiers | | | |
|---------------|-----------|-------------|----|----|----|-----------|--|--|--|
| Non-Fac Total | Fac Total | 50 | 51 | 62 | 80 | | | | |
| 6.04 | 2.96 | 000 | 0 | 3 | 0 | 0 | | | |

AMA: Spring 1994:8, Oct 1997:6, Apr 2006:1

Pub 100-3, 1, 100.2

45308 Proctosigmoidoscopy, rigid; with removal of single tumor, polyp, or other lesion by hot biopsy forceps or bipolar cautery A 2 I

Coding Tip

Ablation of tumors, polyps, or other lesions - 45320

| RVU | | Global Days | | | | Modifiers | | | |
|---------------|-----------|-------------|----|----|----|-----------|--|--|--|
| Non-Fac Total | Fac Total | 50 | 51 | 62 | 80 | | | | |
| 5.67 | 2.51 | 000 | 0 | 3 | 0 | 1 | | | |

AMA: Spring 1994:8, Oct 1997:6, Apr 2006:1

Pub 100-3, 1, 100.2

45309 Proctosigmoidoscopy, rigid; with removal of single tumor, polyp, or other lesion by snare technique A 2 I

| RVU | | Global Days | | | | Modifiers | | | |
|---------------|-----------|-------------|----|----|----|-----------|--|--|--|
| Non-Fac Total | Fac Total | 50 | 51 | 62 | 80 | | | | |
| 6.05 | 2.74 | 000 | 0 | 3 | 0 | 1 | | | |

AMA: Spring 1994:8, Oct 1997:6, Apr 2006:1

Pub 100-3, 1, 100.2

45315 Proctosigmoidoscopy, rigid; with removal of multiple tumors, polyps, or other lesions by hot biopsy forceps, bipolar cautery or snare technique A 2 I

| RVU | | Global Days | | | | Modifiers | | | |
|---------------|-----------|-------------|----|----|----|-----------|--|--|--|
| Non-Fac Total | Fac Total | 50 | 51 | 62 | 80 | | | | |
| 6.70 | 3.20 | 000 | 0 | 3 | 0 | 1 | | | |

AMA: Spring 1994:8, Oct 1997:6, Apr 2006:1

Pub 100-3, 1, 100.2

45317 Proctosigmoidoscopy, rigid; with control of bleeding (eg, injection, bipolar cautery, unipolar cautery, laser, heater probe, stapler, plasma coagulator) A 2 I

| RVU | | Global Days | | | | Modifiers | | | |
|---------------|-----------|-------------|----|----|----|-----------|--|--|--|
| Non-Fac Total | Fac Total | 50 | 51 | 62 | 80 | | | | |
| 6.46 | 3.41 | 000 | 0 | 3 | 0 | 1 | | | |

AMA: Spring 1994:8, Oct 1997:6, Apr 2006:1

Pub 100-3, 1, 100.2

45320 Proctosigmoidoscopy, rigid; with ablation of tumor(s), polyp(s), or other lesion(s) not amenable to removal by hot biopsy forceps, bipolar cautery or snare technique (eg, laser) A 2 I

Coding Tip

For removal of tumors, polyps, or lesions - 45308-45315

| RVU | | Global Days | | | | Modifiers | | | |
|---------------|-----------|-------------|----|----|----|-----------|--|--|--|
| Non-Fac Total | Fac Total | 50 | 51 | 62 | 80 | | | | |
| 6.28 | 3.17 | 000 | 0 | 3 | 0 | 1 | | | |

AMA: Spring 1994:8, Oct 1997:6, Apr 2006:1

Pub 100-3, 1, 100.2; Pub 100-3, 1, 140.5

45321 Proctosigmoidoscopy, rigid; with decompression of volvulus A 2 I

| RVU | | Global Days | | | | Modifiers | | | |
|---------------|-----------|-------------|----|----|----|-----------|--|--|--|
| Non-Fac Total | Fac Total | 50 | 51 | 62 | 80 | | | | |
| 3.15 | 3.15 | 000 | 0 | 3 | 0 | 1 | | | |

AMA: Spring 1994:8, Oct 1997:6, Apr 2006:1

Pub 100-3, 1, 100.2

69799 Unlisted procedure, middle ear I X

| RVU | | Global Days | | Modifiers | | | |
|---------------|-----------|-------------|----|-----------|----|---|--|
| Non-Fac Total | Fac Total | 50 | 51 | 62 | 80 | | |
| 0.00 | 0.00 | YYY | 1 | 2 | 1 | 0 | |

AMA: Oct 1999:10

Inner Ear Procedures

Incisional/Destruction Procedures

▲ 69801 Labyrinthotomy, with perfusion of vestibuloactive drugs; transcanal A2 I

| RVU | | Global Days | | Modifiers | | | |
|---------------|-----------|-------------|----|-----------|----|---|--|
| Non-Fac Total | Fac Total | 50 | 51 | 62 | 80 | | |
| 5.96 | 8.94 | 000 | 1 | 2 | 0 | 0 | |

AMA: Nov 1996:12

Coding Guidance

Mastoidectomy is included as part of the code descriptor for auditory procedure 69802. A separate mastoidectomy service code should not be reported.

▲ 69802 Labyrinthotomy, with perfusion of vestibuloactive drug(s); with mastoidectomy G2 I

| RVU | | Global Days | | Modifiers | | | |
|---------------|-----------|-------------|----|-----------|----|---|--|
| Non-Fac Total | Fac Total | 50 | 51 | 62 | 80 | | |
| 31.06 | 31.06 | 090 | 1 | 2 | 0 | 2 | |

69805 Endolymphatic sac operation; without shunt A2 I

| RVU | | Global Days | | Modifiers | | | |
|---------------|-----------|-------------|----|-----------|----|---|--|
| Non-Fac Total | Fac Total | 50 | 51 | 62 | 80 | | |
| 31.51 | 31.51 | 090 | 1 | 2 | 0 | 2 | |

69806 Endolymphatic sac operation; with shunt A2 I

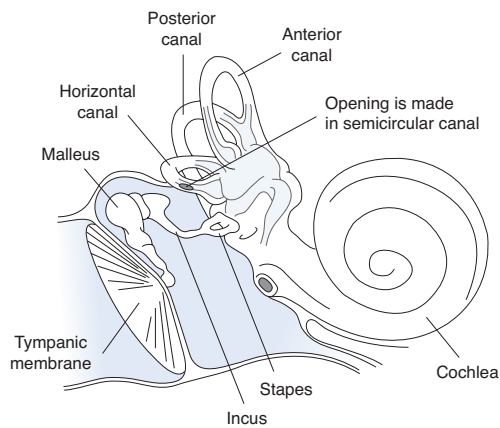
| RVU | | Global Days | | Modifiers | | | |
|---------------|-----------|-------------|----|-----------|----|---|--|
| Non-Fac Total | Fac Total | 50 | 51 | 62 | 80 | | |
| 28.24 | 28.24 | 090 | 1 | 2 | 0 | 1 | |

AMA: Nov 1996:12

69820 Fenestration semicircular canal A2 I

| RVU | | Global Days | | Modifiers | | | |
|---------------|-----------|-------------|----|-----------|----|---|--|
| Non-Fac Total | Fac Total | 50 | 51 | 62 | 80 | | |
| 25.66 | 25.66 | 090 | 1 | 2 | 0 | 2 | |

Semicircular canal fenestration



Primary fenestration (69820); fenestration revision (69840)

69840 Revision fenestration operation A2 I

| RVU | | Global Days | | Modifiers | | | |
|---------------|-----------|-------------|----|-----------|----|---|--|
| Non-Fac Total | Fac Total | 50 | 51 | 62 | 80 | | |
| 24.85 | 24.85 | 090 | 1 | 2 | 0 | 2 | |

Excisional Inner Ear Procedures

69905 Labyrinthectomy; transcanal A2 I

| RVU | | Global Days | | Modifiers | | | |
|---------------|-----------|-------------|----|-----------|----|---|--|
| Non-Fac Total | Fac Total | 50 | 51 | 62 | 80 | | |
| 27.42 | 27.42 | 090 | 1 | 2 | 0 | 1 | |

Coding Guidance

Mastoidectomy is included as part of the code descriptor for auditory procedure 69910. A separate mastoidectomy service code should not be reported.

69910 Labyrinthectomy; with mastoidectomy A2 I

| RVU | | Global Days | | Modifiers | | | |
|---------------|-----------|-------------|----|-----------|----|---|--|
| Non-Fac Total | Fac Total | 50 | 51 | 62 | 80 | | |
| 30.48 | 30.48 | 090 | 1 | 2 | 0 | 0 | |

69915 Vestibular nerve section, translabyrinthine approach A2 I

| RVU | | Global Days | | Modifiers | | | |
|---------------|-----------|-------------|----|-----------|----|---|--|
| Non-Fac Total | Fac Total | 50 | 51 | 62 | 80 | | |
| 46.09 | 46.09 | 090 | 1 | 2 | 1 | 2 | |

Inner Ear Introduction Procedures

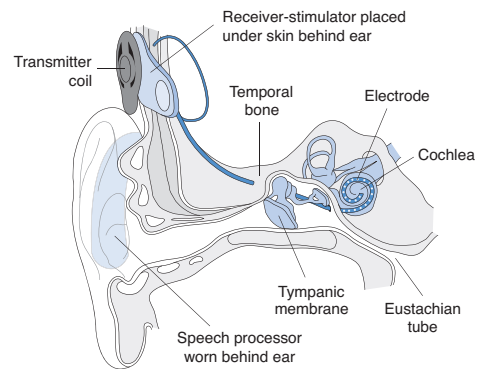
69930 Cochlear device implantation, with or without mastoidectomy H8 I PQR

| RVU | | Global Days | | Modifiers | | | |
|---------------|-----------|-------------|----|-----------|----|---|--|
| Non-Fac Total | Fac Total | 50 | 51 | 62 | 80 | | |
| 36.81 | 36.81 | 090 | 1 | 2 | 0 | 0 | |

Pub 100-3, 1, 50.3; 100-4, 32, 100-100.4

Cochlear device implantation

A device to aid hearing is inserted into the cochlea of the inner ear



Other Inner Ear Procedures

69949 Unlisted procedure, inner ear I X

| RVU | | Global Days | | Modifiers | | | |
|---------------|-----------|-------------|----|-----------|----|---|--|
| Non-Fac Total | Fac Total | 50 | 51 | 62 | 80 | | |
| 0.00 | 0.00 | YYY | 1 | 2 | 1 | 0 | |

Pub 100-4, 12, 30.3

Temporal Bone/Middle Fossa Approach Procedures

69950 Vestibular nerve section, transcranial approach C

| RVU | | Global Days | Modifiers | | | |
|---------------|-----------|-------------|-----------|----|----|----|
| Non-Fac Total | Fac Total | | 50 | 51 | 62 | 80 |
| 56.29 | 56.29 | 090 | 1 | 2 | 1 | 2 |

69955 Total facial nerve decompression and/or repair (may include graft) I PQR

| RVU | | Global Days | Modifiers | | | |
|---------------|-----------|-------------|-----------|----|----|----|
| Non-Fac Total | Fac Total | | 50 | 51 | 62 | 80 |
| 59.37 | 59.37 | 090 | 1 | 2 | 1 | 2 |

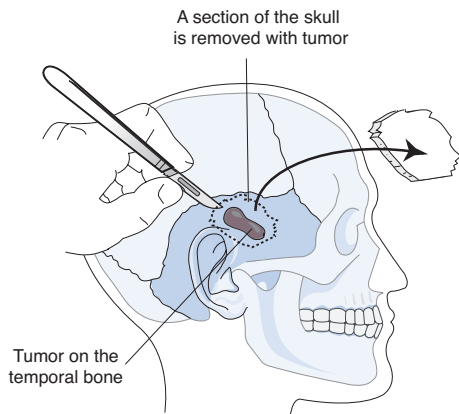
69960 Decompression internal auditory canal I PQR

| RVU | | Global Days | Modifiers | | | |
|---------------|-----------|-------------|-----------|----|----|----|
| Non-Fac Total | Fac Total | | 50 | 51 | 62 | 80 |
| 57.74 | 57.74 | 090 | 1 | 2 | 1 | 2 |

69970 Removal of tumor, temporal bone I PQR

| RVU | | Global Days | Modifiers | | | |
|---------------|-----------|-------------|-----------|----|----|----|
| Non-Fac Total | Fac Total | | 50 | 51 | 62 | 80 |
| 64.37 | 64.37 | 090 | 1 | 2 | 1 | 2 |

Removal of tumor, temporal bone



69979 Unlisted procedure, temporal bone, middle fossa approach I X

| RVU | | Global Days | Modifiers | | | |
|---------------|-----------|-------------|-----------|----|----|----|
| Non-Fac Total | Fac Total | | 50 | 51 | 62 | 80 |
| 0.00 | 0.00 | YYY | 1 | 2 | 1 | 0 |

AMA: Jan 2007:30

Surgical Operating Microscope

Coding Guidance

CMS guidelines for reporting and payment of CPT code 69990 are different from those instructions found in the CPT Manual concerning this code. CMS allows payment for the use of an operating microscope with a list of specified procedures only. These procedures are identified in the Medicare Claims Processing Manual, Internet-Only Manuals (IOM). CMS bundles code 69990 into all other surgical procedures, and it should not be reported, even if used. Most edits do not allow modifier use.

+ 69990 Microsurgical techniques, requiring use of operating microscope (List separately in addition to code for primary procedure) N I N

| RVU | | Global Days | Modifiers | | | |
|---------------|-----------|-------------|-----------|----|----|----|
| Non-Fac Total | Fac Total | | 50 | 51 | 62 | 80 |
| 6.48 | 6.48 | ZZZ | 0 | 0 | 0 | 2 |

AMA: Nov 1998:20, Apr 1999:11, Jun 1999:11, Jul 1999:11, Oct 1999:10, Oct 2000:3, Oct 2002:8, Jan 2004:28, Mar 2005:11, Jul 2005:14, Aug 2005:1, Nov 2007:4, Sep 2008:10, Mar 2009:10

Pub 100-4, 12, 20.4.5

88740 Hemoglobin, quantitative, transcutaneous, per day; carboxyhemoglobin **A**

| RVU | | Global Days | | Modifiers | | | |
|---------------|-----------|-------------|----|-----------|----|---|--|
| Non-Fac Total | Fac Total | 50 | 51 | 62 | 80 | | |
| 0.00 | 0.00 | XXX | 9 | 9 | 9 | 9 | |

88741 Hemoglobin, quantitative, transcutaneous, per day; methemoglobin **A**

| RVU | | Global Days | | Modifiers | | | |
|---------------|-----------|-------------|----|-----------|----|---|--|
| Non-Fac Total | Fac Total | 50 | 51 | 62 | 80 | | |
| 0.00 | 0.00 | XXX | 9 | 9 | 9 | 9 | |

● 88749 Unlisted in vivo (eg, transcutaneous) laboratory service **A**

| RVU | | Global Days | | Modifiers | | | |
|---------------|-----------|-------------|----|-----------|----|---|--|
| Non-Fac Total | Fac Total | 50 | 51 | 62 | 80 | | |
| 0.00 | 0.00 | XXX | 9 | 9 | 9 | 9 | |

Other Laboratory/Pathology Procedures

89049 Caffeine halothane contracture test (CHCT) for malignant hyperthermia susceptibility, including interpretation and report **X**

| RVU | | Global Days | | Modifiers | | | |
|---------------|-----------|-------------|----|-----------|----|---|--|
| Non-Fac Total | Fac Total | 50 | 51 | 62 | 80 | | |
| 7.52 | 1.96 | XXX | 0 | 0 | 0 | 0 | |

AMA: Mar 2006:6, May 2006:19
Pub 100-4, 16, 70.8-70.9

89050 Cell count, miscellaneous body fluids (eg, cerebrospinal fluid, joint fluid), except blood; **A**

| RVU | | Global Days | | Modifiers | | | |
|---------------|-----------|-------------|----|-----------|----|---|--|
| Non-Fac Total | Fac Total | 50 | 51 | 62 | 80 | | |
| 0.17 | 0.17 | XXX | 9 | 9 | 9 | 9 | |

AMA: Aug 2005:9

89051 Cell count, miscellaneous body fluids (eg, cerebrospinal fluid, joint fluid), except blood; with differential count **A**

| RVU | | Global Days | | Modifiers | | | |
|---------------|-----------|-------------|----|-----------|----|---|--|
| Non-Fac Total | Fac Total | 50 | 51 | 62 | 80 | | |
| 0.23 | 0.23 | XXX | 9 | 9 | 9 | 9 | |

89055 Leukocyte assessment, fecal, qualitative or semiquantitative **A**

| RVU | | Global Days | | Modifiers | | | |
|---------------|-----------|-------------|----|-----------|----|---|--|
| Non-Fac Total | Fac Total | 50 | 51 | 62 | 80 | | |
| 0.17 | 0.17 | XXX | 9 | 9 | 9 | 9 | |

AMA: Jul 2003:9

89060 Crystal identification by light microscopy with or without polarizing lens analysis, tissue or any body fluid (except urine) **A**

| RVU | | Global Days | | Modifiers | | | |
|---------------|-----------|-------------|-----|-----------|----|---|---|
| Non-Fac Total | Fac Total | 50 | 51 | 62 | 80 | | |
| 0.28 | 0.28 | XXX | 9 | 9 | 9 | 9 | |
| 26 | 0.57 | 0.57 | XXX | 0 | 0 | 0 | 0 |

x 89100 Duodenal intubation and aspiration; single specimen (eg, simple bile study or afferent loop culture) plus appropriate test procedure

x 89105 Duodenal intubation and aspiration; collection of multiple fractional specimens with pancreatic or gallbladder stimulation; single or double lumen tube

89125 Fat stain, feces, urine, or respiratory secretions **A**

| RVU | | Global Days | | Modifiers | | | |
|---------------|-----------|-------------|----|-----------|----|---|--|
| Non-Fac Total | Fac Total | 50 | 51 | 62 | 80 | | |
| 0.24 | 0.24 | XXX | 9 | 9 | 9 | 9 | |

x 89130 Gastric intubation and aspiration, diagnostic, each specimen, for chemical analyses or cytopathology

x 89132 Gastric intubation and aspiration, diagnostic, each specimen, for chemical analyses or cytopathology; after stimulation

x 89135 Gastric intubation, aspiration, and fractional collections (eg, gastric secretory study); 1 hour

x 89136 Gastric intubation, aspiration, and fractional collections (eg, gastric secretory study); 2 hours

x 89140 Gastric intubation, aspiration, and fractional collections (eg, gastric secretory study); 2 hours including gastric stimulation (eg, histalog, pentagastrin)

x 89141 Gastric intubation, aspiration, and fractional collections (eg, gastric secretory study); 3 hours, including gastric stimulation

89160 Meat fibers, feces **A**

| RVU | | Global Days | | Modifiers | | | |
|---------------|-----------|-------------|----|-----------|----|---|--|
| Non-Fac Total | Fac Total | 50 | 51 | 62 | 80 | | |
| 0.11 | 0.11 | XXX | 9 | 9 | 9 | 9 | |

89190 Nasal smear for eosinophils **A**

| RVU | | Global Days | | Modifiers | | | |
|---------------|-----------|-------------|----|-----------|----|---|--|
| Non-Fac Total | Fac Total | 50 | 51 | 62 | 80 | | |
| 0.17 | 0.17 | XXX | 9 | 9 | 9 | 9 | |

89220 Sputum, obtaining specimen, aerosol induced technique (separate procedure) **X**

| RVU | | Global Days | | Modifiers | | | |
|---------------|-----------|-------------|----|-----------|----|---|--|
| Non-Fac Total | Fac Total | 50 | 51 | 62 | 80 | | |
| 0.47 | 0.47 | XXX | 0 | 0 | 0 | 0 | |

AMA: Aug 2005:9
Pub 100-4, 16, 70.8-70.9

x 89225 Starch granules, feces

89230 Sweat collection by iontophoresis **X**

| RVU | | Global Days | | Modifiers | | | |
|---------------|-----------|-------------|----|-----------|----|---|--|
| Non-Fac Total | Fac Total | 50 | 51 | 62 | 80 | | |
| 0.09 | 0.09 | XXX | 0 | 0 | 0 | 0 | |

Pub 100-3, 1, 190.5

x 89235 Water load test

89240 Unlisted miscellaneous pathology test **X** **x**

| RVU | | Global Days | | Modifiers | | | |
|---------------|-----------|-------------|----|-----------|----|---|--|
| Non-Fac Total | Fac Total | 50 | 51 | 62 | 80 | | |
| 0.00 | 0.00 | XXX | 0 | 0 | 0 | 0 | |

AMA: Nov 2005:14, Jan 2007:30

Reproductive Medicine Procedures/Testing

89250 Culture of oocyte(s)/embryo(s), less than 4 days; ♀ **X**

| RVU | | Global Days | | Modifiers | | | |
|---------------|-----------|-------------|----|-----------|----|---|--|
| Non-Fac Total | Fac Total | 50 | 51 | 62 | 80 | | |
| 13.51 | 13.51 | XXX | 9 | 9 | 9 | 9 | |

AMA: Nov 1997:35,36, Jan 1998:6, Oct 1998:1, Apr 2004:2, May 2004:16, Jun 2004:9

Pub 100-4, 16, 70.8-70.9

89251 Culture of oocyte(s)/embryo(s), less than 4 days; with co-culture of oocyte(s)/embryos ♀ ✕

| RVU | | Global Days | | Modifiers | | | |
|---------------|-----------|-------------|----|-----------|----|----|--|
| Non-Fac Total | Fac Total | XXX | 50 | 51 | 62 | 80 | |
| 0.00 | 0.00 | XXX | 9 | 9 | 9 | 9 | |

AMA: Nov 1997:35,36, Jan 1998:6, Oct 1998:1, Apr 2004:2

Pub 100-4, 16, 70.8-70.9

89253 Assisted embryo hatching, microtechniques (any method) ♀ ✕

| RVU | | Global Days | | Modifiers | | | |
|---------------|-----------|-------------|----|-----------|----|----|--|
| Non-Fac Total | Fac Total | XXX | 50 | 51 | 62 | 80 | |
| 0.00 | 0.00 | XXX | 9 | 9 | 9 | 9 | |

AMA: Nov 1997:35,36, Jan 1998:6, Oct 1998:1, Apr 2004:2, May 2004:16, Jun 2004:9

Pub 100-4, 16, 70.8-70.9

89254 Oocyte identification from follicular fluid ♀ ✕

| RVU | | Global Days | | Modifiers | | | |
|---------------|-----------|-------------|----|-----------|----|----|--|
| Non-Fac Total | Fac Total | XXX | 50 | 51 | 62 | 80 | |
| 0.00 | 0.00 | XXX | 9 | 9 | 9 | 9 | |

AMA: Nov 1997:35,36, Jan 1998:6, Oct 1998:1, Apr 2004:2, May 2004:16, Jun 2004:9

Pub 100-4, 16, 70.8-70.9

89255 Preparation of embryo for transfer (any method) ♀ ✕

| RVU | | Global Days | | Modifiers | | | |
|---------------|-----------|-------------|----|-----------|----|----|--|
| Non-Fac Total | Fac Total | XXX | 50 | 51 | 62 | 80 | |
| 0.00 | 0.00 | XXX | 9 | 9 | 9 | 9 | |

AMA: Nov 1997:35-36, Jan 1998:6, Oct 1998:1, Apr 2004:2, May 2004:16, Jun 2004:9

Pub 100-4, 16, 70.8-70.9

89257 Sperm identification from aspiration (other than seminal fluid) ♂ ✕

| RVU | | Global Days | | Modifiers | | | |
|---------------|-----------|-------------|----|-----------|----|----|--|
| Non-Fac Total | Fac Total | XXX | 50 | 51 | 62 | 80 | |
| 0.00 | 0.00 | XXX | 9 | 9 | 9 | 9 | |

AMA: Nov 1997:35,36, Jan 1998:6, Oct 1998:1, Apr 2004:2

Pub 100-4, 16, 70.8-70.9

89258 Cryopreservation; embryo(s) ♀ ✕

| RVU | | Global Days | | Modifiers | | | |
|---------------|-----------|-------------|----|-----------|----|----|--|
| Non-Fac Total | Fac Total | XXX | 50 | 51 | 62 | 80 | |
| 0.00 | 0.00 | XXX | 9 | 9 | 9 | 9 | |

AMA: Nov 1997:35,36, Jan 1998:6, Oct 1998:1, Apr 2004:2,4

Pub 100-4, 16, 70.8-70.9

89259 Cryopreservation; sperm ♂ ✕

| RVU | | Global Days | | Modifiers | | | |
|---------------|-----------|-------------|----|-----------|----|----|--|
| Non-Fac Total | Fac Total | XXX | 50 | 51 | 62 | 80 | |
| 0.00 | 0.00 | XXX | 9 | 9 | 9 | 9 | |

AMA: Nov 1997:35,36, Jan 1998:6, Oct 1998:1, Apr 2004:2,4

Pub 100-4, 16, 70.8-70.9

89260 Sperm isolation; simple prep (eg, sperm wash and swim-up) for insemination or diagnosis with semen analysis ♂ ✕

| RVU | | Global Days | | Modifiers | | | |
|---------------|-----------|-------------|----|-----------|----|----|--|
| Non-Fac Total | Fac Total | XXX | 50 | 51 | 62 | 80 | |
| 0.00 | 0.00 | XXX | 9 | 9 | 9 | 9 | |

AMA: Nov 1997:36, Jan 1998:6, Oct 1998:1, Apr 2004:3,4

Pub 100-4, 16, 70.8-70.9

89261 Sperm isolation; complex prep (eg, Percoll gradient, albumin gradient) for insemination or diagnosis with semen analysis ♂ ✕

| RVU | | Global Days | | Modifiers | | | |
|---------------|-----------|-------------|----|-----------|----|----|--|
| Non-Fac Total | Fac Total | XXX | 50 | 51 | 62 | 80 | |
| 0.00 | 0.00 | XXX | 9 | 9 | 9 | 9 | |

AMA: Nov 1997:36, Jan 1998:6, Oct 1998:1, Apr 2004:3,4

Pub 100-4, 16, 70.8-70.9

89264 Sperm identification from testis tissue, fresh or cryopreserved ♂ ✕

| RVU | | Global Days | | Modifiers | | | |
|---------------|-----------|-------------|----|-----------|----|----|--|
| Non-Fac Total | Fac Total | XXX | 50 | 51 | 62 | 80 | |
| 0.00 | 0.00 | XXX | 9 | 9 | 9 | 9 | |

AMA: Nov 1998:30, Apr 2004:3,4

Pub 100-4, 16, 70.8-70.9

89268 Insemination of oocytes ♀ ✕

| RVU | | Global Days | | Modifiers | | | |
|---------------|-----------|-------------|----|-----------|----|----|--|
| Non-Fac Total | Fac Total | XXX | 50 | 51 | 62 | 80 | |
| 0.00 | 0.00 | XXX | 9 | 9 | 9 | 9 | |

AMA: Apr 2004:3,4

Pub 100-4, 16, 70.8-70.9

89272 Extended culture of oocyte(s)/embryo(s), 4-7 days ♀ ✕

| RVU | | Global Days | | Modifiers | | | |
|---------------|-----------|-------------|----|-----------|----|----|--|
| Non-Fac Total | Fac Total | XXX | 50 | 51 | 62 | 80 | |
| 0.00 | 0.00 | XXX | 9 | 9 | 9 | 9 | |

AMA: Apr 2004:3,4

Pub 100-4, 16, 70.8-70.9

89280 Assisted oocyte fertilization, microtechnique; less than or equal to 10 oocytes ♀ ✕

| RVU | | Global Days | | Modifiers | | | |
|---------------|-----------|-------------|----|-----------|----|----|--|
| Non-Fac Total | Fac Total | XXX | 50 | 51 | 62 | 80 | |
| 0.00 | 0.00 | XXX | 9 | 9 | 9 | 9 | |

AMA: Apr 2004:3,4

Pub 100-4, 16, 70.8-70.9

89281 Assisted oocyte fertilization, microtechnique; greater than 10 oocytes ♀ ✕

| RVU | | Global Days | | Modifiers | | | |
|---------------|-----------|-------------|----|-----------|----|----|--|
| Non-Fac Total | Fac Total | XXX | 50 | 51 | 62 | 80 | |
| 0.00 | 0.00 | XXX | 9 | 9 | 9 | 9 | |

AMA: Apr 2004:3,4

Pub 100-4, 16, 70.8-70.9

89290 Biopsy, oocyte polar body or embryo blastomere, microtechnique (for pre-implantation genetic diagnosis); less than or equal to 5 embryos ♀ ✕

| RVU | | Global Days | | Modifiers | | | |
|---------------|-----------|-------------|----|-----------|----|----|--|
| Non-Fac Total | Fac Total | XXX | 50 | 51 | 62 | 80 | |
| 0.00 | 0.00 | XXX | 9 | 9 | 9 | 9 | |

AMA: Apr 2004:5

Pub 100-4, 16, 70.8-70.9

89291 Biopsy, oocyte polar body or embryo blastomere, microtechnique (for pre-implantation genetic diagnosis); greater than 5 embryos ♀ ✕

| RVU | | Global Days | | Modifiers | | | |
|---------------|-----------|-------------|----|-----------|----|----|--|
| Non-Fac Total | Fac Total | XXX | 50 | 51 | 62 | 80 | |
| 0.00 | 0.00 | XXX | 9 | 9 | 9 | 9 | |

AMA: Apr 2004:5

Pub 100-4, 16, 70.8-70.9