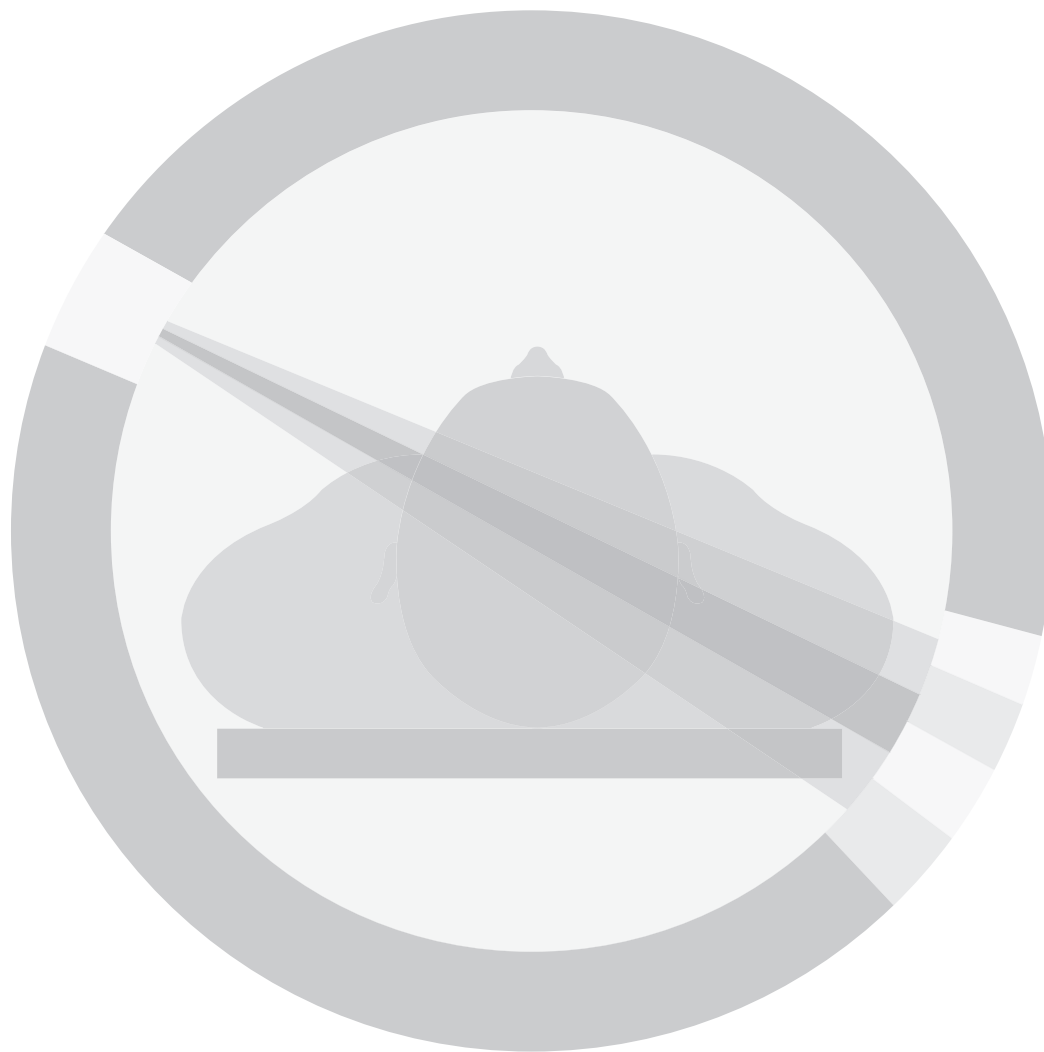


Coding and Billing for  
**Neurology/  
Neurosurgery**

A Comprehensive and Illustrative Specialty Guide



**2011**

# Contents

<b>Introduction</b> .....	<b>i</b>
Medical Terms, Common Abbreviations, and Basic Anatomy .....	i
CPT Procedural Coding .....	i
ICD-9-CM Diagnostic Coding .....	ii
HCPCS Level II Codes .....	ii
Modifiers .....	ii
Evaluation and Management (E/M) Services .....	ii
Medicare Official Regulatory References .....	ii
<b>Terminology, Abbreviations, and Basic Anatomy</b> .....	<b>1</b>
Medical Terminology .....	1
Neurology/Neurosurgery Terms .....	4
Abbreviations .....	10
Anatomy .....	15
Anatomical Planes .....	16
Anatomical Movement Terms .....	17
Neurology/Neurosurgery Anatomy .....	18
<b>ICD-10-CM/PCS Coding</b> .....	<b>23</b>
ICD-10-CM .....	23
Development of ICD-10-CM .....	23
Introduction to ICD-10-PCS .....	25
ICD-10-PCS Structure .....	25
ICD-10-PCS Format .....	26
<b>CPT Procedural Coding</b> .....	<b>27</b>
The CPT Book .....	27
Locating a CPT Code .....	28
CPT Symbols .....	29
Add-on Codes .....	29
Unlisted Procedure or Service .....	29
Surgical Package .....	29
Category II Codes .....	30
Category III Codes .....	30
2011 Neurology/Neurosurgery CPT Codes and Crosswalks .....	30
2011 Neurology/Neurosurgery CPT Code Index .....	417
<b>ICD-9-CM Diagnostic Coding</b> .....	<b>449</b>
ICD-9-CM Format .....	449
ICD-9-CM Conventions .....	450
ICD-9-CM Coding .....	451
2011 Neurology/Neurosurgery Diagnostic Code Index .....	451
<b>HCPCS Level II Codes</b> .....	<b>471</b>
HCPCS Level II Code Structure .....	471
HCPCS Level II Symbols .....	471
How to Use HCPCS Level II Codes .....	471
Durable Medical Equipment .....	472
2011 Neurology/Neurosurgery HCPCS Level II Code Index .....	473
<b>Modifiers</b> .....	<b>479</b>
Modifier Usage .....	479
CPT Modifiers .....	479
Approved Modifiers for Ambulatory Surgery Center (ASC) Hospital Outpatient Use .....	483
2011 HCPCS Level II Modifiers .....	485
<b>Evaluation and Management Services</b> .....	<b>493</b>
Evaluation and Management Services Documentation .....	493
Specific Definitions and Guidance for Exam Elements .....	495
Neurology Examination .....	498
Medical Decision Making .....	499
Office or Other Outpatient Services (99201-99215) .....	501
Hospital Observation Services (99217-99220) .....	501
Hospital Inpatient Services (99221-99239) .....	501
Consultations (99241-99255) .....	502
Emergency Department Services (99281-99285) .....	502
Critical Care Services (99291-99292) .....	502
Nursing Facility Services (99304-99318) .....	503
Preventive Medicine Services (99381-99397) .....	503
<b>Appendix A: Correct Coding Initiative</b> .....	<b>505</b>
Surgery: Nervous System 61000-64999 .....	505
Medicine: Neurology and Neuromuscular Procedures 95805-96020 .....	506
<b>Appendix B: Modifier Rules</b> .....	<b>511</b>
Mult Proc = Multiple Procedure (Modifier 51) .....	511
Bilat Surg = Bilateral Surgery (Modifier 50) .....	511
Asst Surg = Assistant at Surgery (Modifier 80) .....	512
Co Surg = Co-surgeons (Modifier 62) .....	512
Team Surg = Team Surgery (Modifier 66) .....	512

-ole	little version
-oma	tumor (usually)
-osis	full of
-ostomy	“mouth-cut”
-pathy	disease of, suffering
-penia	lack
-pexy	fix in place
-plasty	re-shaping
-philia	affection for
-rhage	burst out
-rhea	discharge, flowing out
-rhexis	shredding
-pagus	Siamese twins
-sis	idea (makes a noun, typically abstract)
-thrix	hair
-tomy	cut
-ule	little version
-um	thing (makes a noun, typically abstract)

## Neurology/Neurosurgery Terms

The following definitions are medical terms commonly seen while coding/billing for Neurology/Neurosurgery:

**Acetylcholine** – A chemical messenger (transmitter) in the striatum area of the brain.

**Action Tremor** – Tremor that occurs or increases when the hand is moving voluntarily.

**Adjuvant** – Agent is administered after biopsy (or surgery) and completion of irradiation.

**Agonist** – A chemical or drug that enhances the activity of a neurotransmitter.

**Akinesia** – Delay in initiating movement or inability to move; “freezing.”

**Allograft** – Transplant cells taken from a different member of the same species (such as using a human fetus for a human brain cell transplantation).

**Alpha Motoneuron** – A large, heavily myelinated neuron whose cell body is found in the ventral horn of the spinal cord. Innervates skeletal muscles.

**Amygdala** – A collection of nuclei at the base of the temporal lobe, part of the limbic system. Plays a role in several emotional behaviors such as aggression and sexual behavior.

**Anterior Cerebral Artery** – One of the three primary cerebral arteries. Provides blood supply primarily to the frontal and parietal lobes.

**Anterior Commissure** – A forebrain commissure that provides communication between structures within the temporal lobes.

**Anterior Neuropore** – The opening at the cranial end of the neural tube. This closes during the fourth week of development.

**Anterolateral System** – The somatosensory pathway responsible for pain, temperature and crude touch sensation. Its main components are the A-delta and C afferent fibers, dorsal spinal gray matter, the anterolateral pathway of the spinal cord. It is composed mainly of the spinothalamic tract (projecting to VPL of the thalamus) and the smaller spinoreticular, spinomesencephalic and spinotectal tracts.

**Antioxidant** – Agent that prevents the loss of oxygen in chemical reactions.

**Anxiety** – Excessive or exaggerated worry, beyond-normal response to life stress.

**Aphasia** – Complete loss or lack of ability to speak, write, or understand spoken or written language

**Apoptosis** – Form of cell death in which cells shrink and disappear. It is sometimes referred to as “cell suicide” and was first described more than 40 years ago. Some scientists think that in Parkinsonia Dementia (PD), the substantia nigra nerve cells die by apoptosis.

**Areflexic** – A condition in which a given reflex can not be elicited.

**Artificial Ventilation** – Mechanical assistive devices to move air into the lungs.

**Ataxia** – Loss of balance.

**Athetosis** – Slow, involuntary movements of the hands and feet.

**Autonomic Nervous System** – A system of visceral motor nerves arising inside the CNS, consisting of sympathetic and parasympathetic divisions. These arise as preganglionic axons in the brain stem and sacral spinal cord(parasympathetic), and the thoracic and upper lumbar spinal cord(sympathetic), and terminate on postganglionic axons. The latter arise in ganglia lying outside the CNS, and terminate in glands, visceral organs, cardiac muscle, and smooth muscle of the gut.

**Autoreceptor** – A receptor molecule located in the presynaptic neuron’s axon terminal. It is thought to play a role in providing feedback to the presynaptic neuron and play a role in modulating synaptic activity.

**Axon** – Part of the neuron that carries the neural impulse away from the soma toward the target of the neuron. This part of the neuron carries action potentials.

**Axon Hillock** – The portion of the axon where the axon leaves the soma. It is here that spatial and temporal summation occur and the action potential begins.

**Axon Terminal** – The ending of the axon that connects to the neural target. It contains the neural transmitters to be released.

**Axonotmesis** – Axonal continuity is lost and there is Wallerian degeneration of the distal segment. Recovery depends upon regeneration of nerve fibers, a process that occurs over months at a rate of 1mm-3mm per day.

**Basal Ganglia** – Structures deep within the brain that help control movement and are abnormal in Parkinson’s disease.

**Basket Cells** – Provides lateral inhibition to the Purkinje cells of the cerebellar cortex; neurotransmitter is gamma-amniobutyric acid (GABA).

**Benign Essential Tremor** – Also called familial or essential tremor (ET). A condition more common than PD, which often includes bilateral tremor of the hands, head tremor, and a tremulous quality to the voice.

**Bioavailability** – Rate and extent to which a drug or biological is absorbed or is otherwise available to the treatment site in the body.

of Diseases, 10th Edition (ICD-10). To view these Mappings, refer to the following link:

[http://www.contextodata.com/2010ICD10CMMappings/2010\\_I9Gem.txt](http://www.contextodata.com/2010ICD10CMMappings/2010_I9Gem.txt)  
[http://www.contextodata.com/2010ICD10CMMappings/2010\\_I10Gem.txt](http://www.contextodata.com/2010ICD10CMMappings/2010_I10Gem.txt)

### ICD-10-CM Code Set Improvements

The clinical modification of ICD-10 represents a significant improvement over ICD-9-CM. Some of the specific organizational improvements that provide greater specificity in code assignment include:

- The addition of information relevant to ambulatory and managed care encounters
- Expanded injury codes, grouped by anatomical site rather than injury category
- The creation of combination diagnosis/symptom or manifestation codes to reduce the number of codes needed to fully describe a condition as well as combination codes for poisonings and external causes
- The addition of 6th and 7th characters with the seventh digit extensions representing visit encounter or sequelae for injuries and external causes
- Added laterality
- Full code titles for all codes with the incorporation of common 4th and 5th digit subclassifications (no more referring back to common fourth and fifth digits to understand the full code)
- V and E codes are no longer supplemental classifications
- Postoperative complications have been grouped within a procedure-specific body system chapter

### Official Coding Guideline Differences

In order to code more effectively, the Official Guidelines for Coding and Reporting should be reviewed. Below are examples of the ICD-9-CM and ICD-10-CM Guidelines placed side-by-side and the differences between the two become readily apparent. Because the format and structure of ICD-10-CM has undergone a number of changes, there is additional information as well as the changes.

ICD-9-CM General Coding Guidelines	ICD-10-CM General Coding Guidelines
<b>Locating a Code in ICD-9-CM</b>	<b>Locating a Code in ICD-10-CM</b>
Locate each term in the Alphabetic Index and verify the code selected in the Tabular List. Read and be guided by instructional notations that appear in both the Alphabetic Index and the Tabular List.	To select a code in the classification that corresponds to a diagnosis or reason for visit documented in a medical record, first locate the term in the Index, and then verify the code in the Tabular List. Read and be guided by instructional notations that appear in both the Index and the Tabular List.  It is essential to use both the Index and Tabular List when locating and assigning a code. The Index does not always provide the full code. Selection of the full code, including laterality and any applicable 7th character can only be done in the Tabular List. A dash (-) at the end of an Index entry indicates that additional characters are required. Even if a dash is not included at the Index entry, it is necessary to refer to the Tabular List to verify that no 7th character is required.

ICD-9-CM General Coding Guidelines	ICD-10-CM General Coding Guidelines
<b>Level of Detail in Coding</b>	<b>Level of Detail in Coding</b>
ICD-9-CM diagnosis codes are composed of codes with 3, 4, or 5 digits. Codes with three digits are included in ICD-9-CM as the heading of a category of codes that may be further subdivided by the use of fourth and/or fifth digits, which provide greater detail.	ICD-10-CM diagnosis codes are composed of codes with 3, 4, 5, 6, or 7 digits. Codes with three digits are included in ICD-10-CM as the heading of a category of codes that may be further subdivided by the use of fourth and/or fifth digits, which provide greater detail.
A three digit code is to be used only if it is not further subdivided. Where fourth-digit subcategories and/or fifth-digit subclassifications are provided, they must be assigned. A code is invalid if it has not been coded to the full number of digits required for that code.	A three-digit code is to be used only if it is not further subdivided. A code is invalid if it has not been coded to the full number of characters required for that code, including the 7th character, if applicable.
<b>Codes from 001.0 through V91.99</b>	<b>Codes from A00.0 through T88.9, Z00-Z99.89</b>
The appropriate code or codes from 001.0 through V91.99 must be used to identify problems, complaints or other reason(s) for the encounter/visit.	The appropriate code or codes from A00.0 through T88.9, Z00-Z99.89 must be used to identify diagnoses, symptoms, conditions, problems, complaints or other reason(s) for the encounter/visit.
<b>Signs and Symptoms</b>	<b>Signs and Symptoms</b>
Codes that describe symptoms and signs, as opposed to diagnoses, are acceptable for reporting purposes when a related definitive diagnosis has not been established (confirmed) by the provider. Chapter 16 of ICD-9-CM, Symptoms, Signs, and Ill-defined conditions (codes 780.0-799.9) contains many, but not all codes for symptoms.	Codes that describe symptoms and signs, as opposed to diagnoses, are acceptable for reporting purposes when a related definitive diagnosis has not been established (confirmed) by the provider. Chapter 18 of ICD-10-CM, Symptoms, Signs, and Abnormal Clinical and Laboratory Findings, Not Elsewhere Classified (codes R00.0-R99) contains many, but not all codes for symptoms.

### Neurology/Neurosurgery Specific ICD-10-CM Coding Information

In ICD-10-CM, codes for diseases of the nervous system and sense organs (excluding the eye/adnexa and ear/mastoid process) are found in Chapter 6. The eyes and ears each have their own dedicated chapters, Chapters 7 and 8 respectively. Cerebrovascular diseases are reported with codes from Chapter 9, Diseases of the Circulatory System. Injuries of the nervous system and supporting structures such as skull fractures, traumatic intracranial hemorrhage, and spinal cord injuries are found in Chapter 19. There are extensive changes in diagnosis coding for ICD-10-CM as compared with ICD-9-CM. A few examples of guideline and coding changes include:

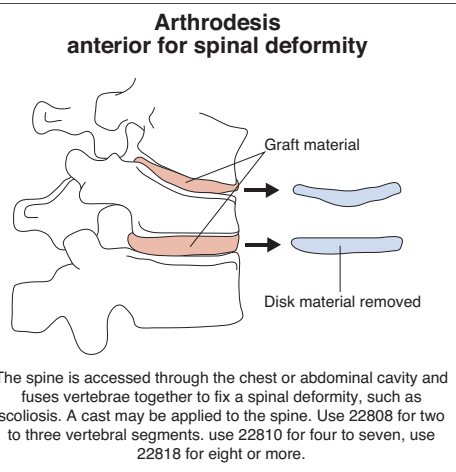
- Many conditions are require documentation related to the affected side of the body (laterality) on which the surgical procedure is performed.
- Nontraumatic intracranial hemorrhage requires more specific documentation related to the site or vessel that is bleeding including whether it is the right or left. For example, a nontraumatic subarachnoid hemorrhage should be specified as located at the right or left carotid siphon and bifurcation, middle cerebral artery, anterior communicating artery, posterior communicating artery, vertebral artery, or basilar artery.

## 22808-22812

- 22808** Arthrodesis, anterior, for spinal deformity, with or without cast; 2 to 3 vertebral segments
- 22810** Arthrodesis, anterior, for spinal deformity, with or without cast; 4 to 7 vertebral segments
- 22812** Arthrodesis, anterior, for spinal deformity, with or without cast; 8 or more vertebral segments

### Plain English Description

Anterior arthrodesis, also referred to as spinal fusion, of two or more vertebral segments is performed to treat spinal deformity such as kyphosis or scoliosis. Fusion may be used alone or in conjunction with other procedures. Depending on the level and extent of the deformity, an anterior neck, thoracic, thoracoabdominal, abdominal, retropleural, or retroperitoneal incision is made. Soft tissues are dissected and the vertebrae are exposed. The vertebral segments are roughened in preparation for bone grafting. A separately reportable autogenous bone graft is obtained from the ribs, iliac crest, or other site and the bone graft is prepared. Allograft bone obtained from a bone bank may also be used. The bone graft is placed along the prepared vertebrae. Separately reportable internal fixation devices are placed through the pedicles or facets. A drain may be placed and the surgical wound is then closed in layers. A body cast is applied if needed. Use 22808 for anterior approach fusion of 2-3 vertebral segments; use 22810 for fusion of 4-7 vertebral segments; use 22812 for fusion of 8 or more vertebral segments.



### ICD-9-CM Diagnostic Codes (commonly used)

- 170.2** Malignant neoplasm of vertebral column, excluding sacrum and coccyx
- 192.2** Malignant neoplasm of spinal cord
- 195.0** Malignant neoplasm of head, face, and neck
- 213.2** Benign neoplasm of vertebral column, excluding sacrum and coccyx
- 336.8** Other myelopathy
- 720.0** Ankylosing spondylitis
- 721.0** Cervical spondylosis without myelopathy
- 721.1** Cervical spondylosis with myelopathy
- 721.6** Ankylosing vertebral hyperostosis
- 722.0** Displacement of cervical intervertebral disc without myelopathy
- 722.4** Degeneration of cervical intervertebral disc
- 722.52** Degeneration of lumbar or lumbosacral intervertebral disc
- 722.83** Postlaminectomy syndrome of lumbar region
- 722.92** Other and unspecified disc disorder of thoracic region
- 723.0** Spinal stenosis in cervical region
- ▲ 724.02** Spinal stenosis of lumbar region, without neurogenic claudication
- 732.0** Juvenile osteochondrosis of spine
- 733.13** Pathological fracture of vertebrae
- 737.0** Adolescent postural kyphosis
- 737.10** Kyphosis (acquired) (postural)
- 737.11** Kyphosis due to radiation
- 737.12** Kyphosis, postlaminectomy
- 737.19** Other kyphosis acquired
- 737.20** Lordosis (acquired) (postural)

- 737.21** Lordosis, postlaminectomy
- 737.22** Other postsurgical lordosis
- 737.29** Other lordosis acquired
- 737.30** Scoliosis (and kyphoscoliosis), idiopathic
- 737.31** Resolving infantile idiopathic scoliosis
- 737.32** Progressive infantile idiopathic scoliosis
- 737.34** Thoracogenic scoliosis
- 737.39** Other kyphoscoliosis and scoliosis
- 738.5** Other acquired deformity of back or spine
- 738.6** Acquired deformity of pelvis
- 754.2** Congenital musculoskeletal deformities of spine
- 756.10** Congenital anomaly of spine, unspecified
- 756.14** Hemivertebra
- 756.15** Fusion of spine (vertebra), congenital
- 756.19** Other congenital anomalies of spine
- V45.4** Postsurgical arthrodesis status

### RVU(s)

Code	Work	PE Facility	PE Non-Facility	MP	Total Facility	Total Non-Facility	Global	Status
<b>22808</b>	27.51	19.34	19.34	7.25	54.10	54.10	090	A
<b>22810</b>	31.50	20.78	20.78	7.92	60.20	60.20	090	A
<b>22812</b>	34.25	24.09	24.09	6.74	65.08	65.08	090	A

### Modifiers\*

Code	Mod 50 PAR	Mod 51 PAR	Mod 62 PAR	Mod 66 PAR	Mod 80 PAR
<b>22808</b>	0	2	1	0	2
<b>22810</b>	0	2	1	0	2
<b>22812</b>	0	2	1	0	2

### CCI

<b>22808</b>	0213T <sup>0</sup> , 0216T <sup>0</sup> , 0228T <sup>0</sup> , 0230T <sup>0</sup> , 20600 <sup>1</sup> , 20605 <sup>1</sup> , 20610 <sup>1</sup> , 22505 <sup>0</sup> , 22830 <sup>1</sup> , 22856 <sup>E1</sup> , 22857 <sup>E1</sup> , 29000 <sup>0</sup> , 29010 <sup>0</sup> , 29015 <sup>0</sup> , 29020 <sup>0</sup> , 29025 <sup>0</sup> , 29035 <sup>0</sup> , 29040 <sup>0</sup> , 29044 <sup>0</sup> , 29046 <sup>0</sup> , 29200 <sup>0</sup> , 32100 <sup>1</sup> , 36000 <sup>1</sup> , 36400 <sup>1</sup> , 36405 <sup>1</sup> , 36406 <sup>1</sup> , 36410 <sup>1</sup> , 36420 <sup>1</sup> , 36425 <sup>1</sup> , 36430 <sup>1</sup> , 36440 <sup>1</sup> , 36600 <sup>1</sup> , 36640 <sup>1</sup> , 37202 <sup>1</sup> , 43752 <sup>1</sup> , 49000 <sup>0</sup> , 49002 <sup>1</sup> , 51701 <sup>1</sup> , 51702 <sup>1</sup> , 51703 <sup>1</sup> , 62310 <sup>0</sup> , 62311 <sup>0</sup> , 62318 <sup>0</sup> , 62319 <sup>0</sup> , 63075 <sup>1</sup> , 63077 <sup>1</sup> , 64400 <sup>0</sup> , 64402 <sup>0</sup> , 64405 <sup>0</sup> , 64408 <sup>0</sup> , 64410 <sup>0</sup> , 64412 <sup>0</sup> , 64413 <sup>0</sup> , 64415 <sup>0</sup> , 64416 <sup>0</sup> , 64417 <sup>0</sup> , 64418 <sup>0</sup> , 64420 <sup>0</sup> , 64421 <sup>0</sup> , 64425 <sup>0</sup> , 64430 <sup>0</sup> , 64435 <sup>0</sup> , 64445 <sup>0</sup> , 64446 <sup>0</sup> , 64447 <sup>0</sup> , 64448 <sup>0</sup> , 64449 <sup>0</sup> , 64450 <sup>1</sup> , 64479 <sup>0</sup> , 64483 <sup>0</sup> , 64490 <sup>0</sup> , 64493 <sup>0</sup> , 64505 <sup>0</sup> , 64508 <sup>0</sup> , 64510 <sup>0</sup> , 64517 <sup>0</sup> , 64520 <sup>0</sup> , 64530 <sup>0</sup> , 69990 <sup>0</sup> , 76000 <sup>1</sup> , 76001 <sup>1</sup> , 77001 <sup>1</sup> , 77002 <sup>1</sup> , 92585 <sup>0</sup> , 93000 <sup>1</sup> , 93005 <sup>1</sup> , 93010 <sup>1</sup> , 93040 <sup>1</sup> , 93041 <sup>1</sup> , 93042 <sup>1</sup> , 93318 <sup>1</sup> , 94002 <sup>1</sup> , 94200 <sup>1</sup> , 94250 <sup>1</sup> , 94680 <sup>1</sup> , 94681 <sup>1</sup> , 94690 <sup>1</sup> , 94770 <sup>1</sup> , 95812 <sup>1</sup> , 95813 <sup>1</sup> , 95816 <sup>1</sup> , 95819 <sup>1</sup> , 95822 <sup>0</sup> , 95829 <sup>1</sup> , 95860 <sup>0</sup> , 95861 <sup>0</sup> , 95867 <sup>0</sup> , 95868 <sup>0</sup> , 95870 <sup>0</sup> , 95900 <sup>0</sup> , 95904 <sup>0</sup> , 95920 <sup>0</sup> , 95925 <sup>0</sup> , 95926 <sup>0</sup> , 95927 <sup>0</sup> , 95928 <sup>0</sup> , 95929 <sup>0</sup> , 95930 <sup>0</sup> , 95933 <sup>0</sup> , 95934 <sup>0</sup> , 95936 <sup>0</sup> , 95937 <sup>0</sup> , 95955 <sup>1</sup> , 96360 <sup>1</sup> , 96365 <sup>1</sup> , 96372 <sup>1</sup> , 96374 <sup>1</sup> , 96375 <sup>1</sup> , 96376 <sup>1</sup> , 99148 <sup>0</sup> , 99149 <sup>0</sup> , 99150 <sup>0</sup>							
<b>22810</b>	0213T <sup>0</sup> , 0216T <sup>0</sup> , 0228T <sup>0</sup> , 0230T <sup>0</sup> , 20600 <sup>1</sup> , 20605 <sup>1</sup> , 20610 <sup>1</sup> , 22505 <sup>0</sup> , 22802 <sup>E1</sup> , 22808 <sup>1</sup> , 22830 <sup>1</sup> , 22856 <sup>E1</sup> , 22857 <sup>E1</sup> , 22862 <sup>E1</sup> , 22864 <sup>E1</sup> , 29000 <sup>0</sup> , 29010 <sup>0</sup> , 29015 <sup>0</sup> , 29020 <sup>0</sup> , 29025 <sup>0</sup> , 29035 <sup>0</sup> , 29040 <sup>0</sup> , 29044 <sup>0</sup> , 29046 <sup>0</sup> , 29200 <sup>0</sup> , 32100 <sup>1</sup> , 36000 <sup>1</sup> , 36400 <sup>1</sup> , 36405 <sup>1</sup> , 36406 <sup>1</sup> , 36410 <sup>1</sup> , 36420 <sup>1</sup> , 36425 <sup>1</sup> , 36430 <sup>1</sup> , 36440 <sup>1</sup> , 36600 <sup>1</sup> , 36640 <sup>1</sup> , 37202 <sup>1</sup> , 43752 <sup>1</sup> , 49000 <sup>0</sup> , 49002 <sup>1</sup> , 51701 <sup>1</sup> , 51702 <sup>1</sup> , 51703 <sup>1</sup> , 62310 <sup>0</sup> , 62311 <sup>0</sup> , 62318 <sup>0</sup> , 62319 <sup>0</sup> , 63075 <sup>1</sup> , 63077 <sup>1</sup> , 64400 <sup>0</sup> , 64402 <sup>0</sup> , 64405 <sup>0</sup> , 64408 <sup>0</sup> , 64410 <sup>0</sup> , 64412 <sup>0</sup> , 64413 <sup>0</sup> , 64415 <sup>0</sup> , 64416 <sup>0</sup> , 64417 <sup>0</sup> , 64418 <sup>0</sup> , 64420 <sup>0</sup> , 64421 <sup>0</sup> , 64425 <sup>0</sup> , 64430 <sup>0</sup> , 64435 <sup>0</sup> , 64445 <sup>0</sup> , 64446 <sup>0</sup> , 64447 <sup>0</sup> , 64448 <sup>0</sup> , 64449 <sup>0</sup> , 64450 <sup>1</sup> , 64479 <sup>0</sup> , 64483 <sup>0</sup> , 64490 <sup>0</sup> , 64493 <sup>0</sup> , 64505 <sup>0</sup> , 64508 <sup>0</sup> , 64510 <sup>0</sup> , 64517 <sup>0</sup> , 64520 <sup>0</sup> , 64530 <sup>0</sup> , 69990 <sup>0</sup> , 76000 <sup>1</sup> , 76001 <sup>1</sup> , 77001 <sup>1</sup> , 77002 <sup>1</sup> , 92585 <sup>0</sup> , 93000 <sup>1</sup> , 93005 <sup>1</sup> , 93010 <sup>1</sup> , 93040 <sup>1</sup> , 93041 <sup>1</sup> , 93042 <sup>1</sup> , 93318 <sup>1</sup> , 94002 <sup>1</sup> , 94200 <sup>1</sup> , 94250 <sup>1</sup> , 94680 <sup>1</sup> , 94681 <sup>1</sup> , 94690 <sup>1</sup> , 94770 <sup>1</sup> , 95812 <sup>1</sup> , 95813 <sup>1</sup> , 95816 <sup>1</sup> , 95819 <sup>1</sup> , 95822 <sup>0</sup> , 95829 <sup>1</sup> , 95860 <sup>0</sup> , 95861 <sup>0</sup> , 95867 <sup>0</sup> , 95868 <sup>0</sup> , 95870 <sup>0</sup> , 95900 <sup>0</sup> , 95904 <sup>0</sup> , 95920 <sup>0</sup> , 95925 <sup>0</sup> , 95926 <sup>0</sup> , 95927 <sup>0</sup> , 95928 <sup>0</sup> , 95929 <sup>0</sup> , 95930 <sup>0</sup> , 95933 <sup>0</sup> , 95934 <sup>0</sup> , 95936 <sup>0</sup> , 95937 <sup>0</sup> , 95955 <sup>1</sup> , 96360 <sup>1</sup> , 96365 <sup>1</sup> , 96372 <sup>1</sup> , 96374 <sup>1</sup> , 96375 <sup>1</sup> , 96376 <sup>1</sup> , 99148 <sup>0</sup> , 99149 <sup>0</sup> , 99150 <sup>0</sup>							
<b>22812</b>	<i>There are too many associated CCI codes to list. Refer to Appendix A for complete list.</i>							

### Pub 100

No Pub 100 references apply to this code or code range.

## 43640-43641

- 43640** Vagotomy including pyloroplasty, with or without gastrostomy; truncal or selective
- 43641** Vagotomy including pyloroplasty, with or without gastrostomy; parietal cell (highly selective)

### Plain English Description

The vagus nerve is the tenth cranial nerve. It arises from the brainstem and travels through the neck, thorax, and abdomen, giving rise to multiple branches along its path. At the stomach, the vagus nerve divides into branches that innervate different parts of the stomach and upper digestive tract. Cutting of the vagus nerve is performed to decrease excessive acid production in the stomach to help prevent peptic ulcers. A midline upper abdominal incision is used to expose the stomach and vagus nerve. In 43640, a truncal or selective vagotomy is performed. The vagus nerve is identified and freed from surrounding structures. To perform a truncal vagotomy, the main vagal trunks are located and divided. To perform a selective vagotomy, the main vagal trunks are identified and dissected up to the branch leading to the biliary tree. This branch is followed to the hepatic branch and the nerve is transected as close to the hepatic branch as possible. In 43641, a highly selective vagotomy is performed. The vagal nerve is identified and followed to the Latarjet's nerve branches, also referred to as the parietal cell branches. These branches are divided beginning at the esophagogastric junction and continuing along the lesser curvature of the stomach. Because vagotomy also affects gastric motility, which may delay gastric emptying, a pyloroplasty is performed to enlarge the opening from the stomach to the duodenum. The gastroduodenal junction is exposed and the pyloric sphincter is incised longitudinally and the incision repaired transversely to relax the sphincter and enlarge the opening. A gastrostomy may also be performed. Two concentric pursestring sutures are placed in the stomach around the planned incision site. The serosa of the stomach is incised in the center of the pursestring sutures, the inner mucosal layer is grasped and a small portion excised. The hole in the mucosa is dilated to allow placement of a balloon catheter. The balloon catheter is inserted into the stomach, the balloon inflated, and traction applied to the external catheter to position the balloon against the wall of the stomach. The pursestring sutures are securely tied around the catheter. The stomach is positioned against the abdominal wall and the site of the abdominal incision determined. A stab incision is made in the abdomen, a forceps inserted through the skin into the abdominal cavity, the catheter grasped, and exteriorized. Anchoring sutures are placed on the internal abdominal wall. The abdominal incision is closed in layers.

### ICD-9-CM Diagnostic Codes (commonly used)

- 151.1** Malignant neoplasm of pylorus
- 197.8** Secondary malignant neoplasm of other digestive organs and spleen
- 230.2** Carcinoma in situ of stomach
- 530.11** Reflux esophagitis
- 530.81** Esophageal reflux
- 531.00** Acute gastric ulcer with hemorrhage, without obstruction
- 531.01** Acute gastric ulcer with hemorrhage, with obstruction
- 531.10** Acute gastric ulcer with perforation, without obstruction
- 531.11** Acute gastric ulcer with perforation, with obstruction
- 531.20** Acute gastric ulcer with hemorrhage and perforation, without obstruction
- 531.40** Chronic or unspecified gastric ulcer with hemorrhage, without obstruction
- 531.41** Chronic or unspecified gastric ulcer with hemorrhage, with obstruction
- 531.50** Chronic or unspecified gastric ulcer with perforation, without obstruction
- 531.51** Chronic or unspecified gastric ulcer with perforation, with obstruction
- 531.60** Chronic or unspecified gastric ulcer with hemorrhage and perforation, without obstruction
- 531.61** Chronic or unspecified gastric ulcer with hemorrhage and perforation, with obstruction
- 531.71** Chronic gastric ulcer without hemorrhage or perforation, with obstruction
- 531.91** Gastric ulcer, unspecified as acute or chronic, without hemorrhage or perforation, with obstruction
- 532.00** Acute duodenal ulcer with hemorrhage, without obstruction
- 532.01** Acute duodenal ulcer with hemorrhage, with obstruction
- 532.10** Acute duodenal ulcer with perforation, without obstruction
- 532.11** Acute duodenal ulcer with perforation, with obstruction
- 532.20** Acute duodenal ulcer with hemorrhage and perforation, without obstruction
- 532.21** Acute duodenal ulcer with hemorrhage and perforation, with obstruction

- 532.31** Acute duodenal ulcer without hemorrhage or perforation, with obstruction
- 532.40** Chronic or unspecified duodenal ulcer with hemorrhage, without obstruction
- 532.41** Chronic or unspecified duodenal ulcer with hemorrhage, with obstruction
- 532.50** Chronic or unspecified duodenal ulcer with perforation, without obstruction
- 532.51** Chronic or unspecified duodenal ulcer with perforation, with obstruction
- 532.60** Chronic or unspecified duodenal ulcer with hemorrhage and perforation, without obstruction
- 532.61** Chronic or unspecified duodenal ulcer with hemorrhage and perforation, with obstruction
- 532.71** Chronic duodenal ulcer without hemorrhage or perforation, with obstruction
- 532.90** Duodenal ulcer, unspecified as acute or chronic, without hemorrhage or perforation, without obstruction
- 532.91** Duodenal ulcer, unspecified as acute or chronic, without hemorrhage or perforation, with obstruction
- 533.00** Acute peptic ulcer of unspecified site with hemorrhage, without obstruction
- 533.01** Acute peptic ulcer of unspecified site with hemorrhage, with obstruction
- 533.10** Acute peptic ulcer of unspecified site with perforation, without obstruction
- 533.11** Acute peptic ulcer of unspecified site with perforation, with obstruction
- 533.20** Acute peptic ulcer of unspecified site with hemorrhage and perforation, without obstruction
- 533.21** Acute peptic ulcer of unspecified site with hemorrhage and perforation, with obstruction
- 533.30** Acute peptic ulcer of unspecified site without hemorrhage and perforation, without obstruction
- 533.31** Acute peptic ulcer of unspecified site without hemorrhage and perforation, with obstruction
- 533.40** Chronic or unspecified peptic ulcer of unspecified site with hemorrhage, without obstruction
- 533.41** Chronic or unspecified peptic ulcer of unspecified site with hemorrhage, with obstruction
- 533.50** Chronic or unspecified peptic ulcer of unspecified site with perforation, without obstruction
- 533.51** Chronic or unspecified peptic ulcer of unspecified site with perforation, with obstruction
- 533.60** Chronic or unspecified peptic ulcer of unspecified site with hemorrhage and perforation, without obstruction
- 533.61** Chronic or unspecified peptic ulcer of unspecified site with hemorrhage and perforation, with obstruction
- 533.70** Chronic peptic ulcer of unspecified site without hemorrhage or perforation, without obstruction
- 533.71** Chronic peptic ulcer of unspecified site without hemorrhage or perforation, with obstruction
- 533.90** Peptic ulcer of unspecified site, unspecified as acute or chronic, without hemorrhage or perforation, without obstruction
- 533.91** Peptic ulcer of unspecified site, unspecified as acute or chronic, without hemorrhage or perforation, with obstruction
- 536.8** Dyspepsia and other specified disorders of function of stomach

### RVU(s)

Code	Work	PE Facility	PE Non-Facility	MP	Total Facility	Total Non-Facility	Global	Status
<b>43640</b>	19.56	10.44	10.44	4.11	34.11	34.11	090	A
<b>43641</b>	19.81	10.57	10.57	4.21	34.59	34.59	090	A

### Modifiers\*

Code	Mod 50 PAR	Mod 51 PAR	Mod 62 PAR	Mod 66 PAR	Mod 80 PAR
<b>43640</b>	0	2	1	0	2
<b>43641</b>	0	2	1	0	2

### CCI

- 43640** *There are too many associated CCI codes to list. Refer to Appendix A for complete list.*
- 43641** *There are too many associated CCI codes to list. Refer to Appendix A for complete list.*

### Pub 100

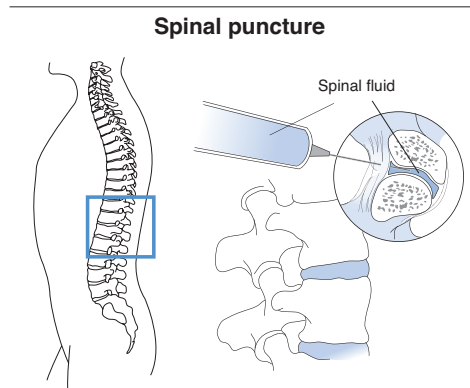
*No Pub 100 references apply to this code or code range.*

**62270-62272**

- 62270** Spinal puncture, lumbar, diagnostic
- 62272** Spinal puncture, therapeutic, for drainage of cerebrospinal fluid (by needle or catheter)

**Plain English Description**

A lumbar spinal puncture is performed for diagnostic or therapeutic purposes. In 62270, a diagnostic lumbar puncture is performed for symptoms that may be indicative of an infection, such as meningitis; a malignant neoplasm; bleeding, such as subarachnoid hemorrhage; multiple sclerosis; Guillain-Barre syndrome. It may also be performed to measure cerebrospinal fluid (CSF) pressure. The skin over the lumbar spine is disinfected and a local anesthetic administered. A lumbar puncture needle is then inserted into the spinal canal and CSF specimens collected. The CSF specimens are sent to the laboratory for separately reportable evaluation. In 62272, a therapeutic spinal puncture is performed for elevated CSF pressure and CSF is drained using a needle or catheter placed as described above. CSF pressure is monitored during the drainage procedure and when the desired pressure is reached, the needle or catheter is removed.



A small amount of spinal fluid is removed through a needle/catheter. Lumbar, diagnostic (62270), therapeutic drainage (62272)

**ICD-9-CM Diagnostic Codes (commonly used)**

- 036.0** Meningococcal meningitis
- 036.1** Meningococcal encephalitis
- 052.0** Postvaricella encephalitis
- 058.21** Human herpesvirus 6 encephalitis
- 058.29** Other human herpesvirus encephalitis
- 062.8** Other specified mosquito-borne viral encephalitis
- 062.9** Mosquito-borne viral encephalitis, unspecified
- 066.41** West Nile fever with encephalitis
- 204.02** Acute lymphoid leukemia, in relapse
- 204.12** Chronic lymphoid leukemia, in relapse
- 204.22** Subacute lymphoid leukemia, in relapse
- 204.82** Other lymphoid leukemia, in relapse
- 204.92** Unspecified lymphoid leukemia, in relapse
- 205.12** Chronic myeloid leukemia, in relapse
- 205.22** Subacute myeloid leukemia, in relapse
- 205.32** Myeloid sarcoma, in relapse
- 205.82** Other myeloid leukemia, in relapse
- 205.92** Unspecified myeloid leukemia, in relapse
- 206.02** Acute monocytic leukemia, in relapse
- 206.12** Chronic monocytic leukemia, in relapse
- 206.22** Subacute monocytic leukemia, in relapse
- 206.82** Other monocytic leukemia, in relapse
- 206.92** Unspecified monocytic leukemia, in relapse
- 207.02** Acute erythremia and erythroleukemia, in relapse
- 207.12** Chronic erythremia, in relapse
- 207.22** Megakaryocytic leukemia, in relapse
- 207.82** Other specified leukemia, in relapse
- 208.02** Acute leukemia of unspecified cell type, in relapse
- 208.12** Chronic leukemia of unspecified cell type, in relapse

- 208.22** Subacute leukemia of unspecified cell type, in relapse
- 208.82** Other leukemia of unspecified cell type, in relapse
- 208.92** Unspecified leukemia, in relapse
- 320.1** Pneumococcal meningitis
- 320.2** Streptococcal meningitis
- 320.3** Staphylococcal meningitis
- 320.7** Meningitis in other bacterial diseases classified elsewhere
- 320.82** Meningitis due to gram-negative bacteria, not elsewhere classified
- 320.89** Meningitis due to other specified bacteria
- 320.9** Meningitis due to unspecified bacterium
- 321.2** Meningitis due to viruses not elsewhere classified
- 322.2** Chronic meningitis
- 322.9** Meningitis, unspecified
- 323.01** Encephalitis and encephalomyelitis in viral diseases classified elsewhere
- 323.02** Myelitis in viral diseases classified elsewhere
- 323.41** Other encephalitis and encephalomyelitis due to infection classified elsewhere
- 323.42** Other myelitis due to infection classified elsewhere
- 323.51** Encephalitis and encephalomyelitis following immunization procedures
- 323.52** Myelitis following immunization procedures
- 323.61** Infectious acute disseminated encephalomyelitis (ADEM)
- 323.62** Other postinfectious encephalitis and encephalomyelitis
- 323.63** Postinfectious myelitis
- 323.71** Toxic encephalitis and encephalomyelitis
- 323.72** Toxic myelitis
- 323.81** Other causes of encephalitis and encephalomyelitis
- 323.9** Unspecified cause of encephalitis, myelitis, and encephalomyelitis
- 331.3** Communicating hydrocephalus
- 331.4** Obstructive hydrocephalus
- 337.00** Idiopathic peripheral autonomic neuropathy, unspecified
- 339.00** Cluster headache syndrome, unspecified

**RVU(s)**

Code	Work	PE Facility	PE Non-Facility	MP	Total Facility	Total Non-Facility	Global	Status
<b>62270</b>	1.37	0.72	2.98	0.23	2.32	4.58	000	A
<b>62272</b>	1.35	0.83	4.00	0.33	2.51	5.68	000	A

**Modifiers\***

Code	Mod 50 PAR	Mod 51 PAR	Mod 62 PAR	Mod 66 PAR	Mod 80 PAR
<b>62270</b>	0	2	0	0	1
<b>62272</b>	0	2	0	0	1

**CCI**

<b>62270</b>	00635 <sup>0</sup> , 01935 <sup>0</sup> , 01936 <sup>0</sup> , 02131 <sup>0</sup> , 02161 <sup>0</sup> , 02281 <sup>0</sup> , 02301 <sup>0</sup> , 36000 <sup>1</sup> , 36400 <sup>1</sup> , 36405 <sup>1</sup> , 36406 <sup>1</sup> , 36410 <sup>1</sup> , 36420 <sup>1</sup> , 36425 <sup>1</sup> , 36430 <sup>1</sup> , 36440 <sup>1</sup> , 36600 <sup>1</sup> , 36640 <sup>1</sup> , 37202 <sup>1</sup> , 43752 <sup>1</sup> , 51701 <sup>1</sup> , 51702 <sup>1</sup> , 51703 <sup>1</sup> , 62273 <sup>1</sup> , 62310 <sup>1</sup> , 62311 <sup>0</sup> , 64400 <sup>0</sup> , 64402 <sup>0</sup> , 64405 <sup>0</sup> , 64408 <sup>0</sup> , 64410 <sup>0</sup> , 64412 <sup>0</sup> , 64413 <sup>0</sup> , 64415 <sup>0</sup> , 64416 <sup>0</sup> , 64417 <sup>0</sup> , 64418 <sup>0</sup> , 64420 <sup>0</sup> , 64421 <sup>0</sup> , 64425 <sup>0</sup> , 64430 <sup>0</sup> , 64435 <sup>0</sup> , 64445 <sup>0</sup> , 64446 <sup>0</sup> , 64447 <sup>0</sup> , 64448 <sup>0</sup> , 64449 <sup>0</sup> , 64450 <sup>0</sup> , 64479 <sup>0</sup> , 64483 <sup>0</sup> , 64490 <sup>0</sup> , 64493 <sup>0</sup> , 64505 <sup>0</sup> , 64508 <sup>0</sup> , 64510 <sup>0</sup> , 64517 <sup>0</sup> , 64520 <sup>0</sup> , 64530 <sup>0</sup> , 69990 <sup>0</sup> , 76000 <sup>1</sup> , 76001 <sup>1</sup> , 77001 <sup>1</sup> , 77002 <sup>1</sup> , 93000 <sup>1</sup> , 93005 <sup>1</sup> , 93010 <sup>1</sup> , 93040 <sup>1</sup> , 93041 <sup>1</sup> , 93042 <sup>1</sup> , 93318 <sup>1</sup> , 94002 <sup>1</sup> , 94200 <sup>1</sup> , 94250 <sup>1</sup> , 94680 <sup>1</sup> , 94681 <sup>1</sup> , 94690 <sup>1</sup> , 94770 <sup>1</sup> , 95812 <sup>1</sup> , 95813 <sup>1</sup> , 95816 <sup>1</sup> , 95819 <sup>1</sup> , 95822 <sup>1</sup> , 95829 <sup>1</sup> , 95955 <sup>1</sup> , 96360 <sup>1</sup> , 96365 <sup>1</sup> , 96372 <sup>1</sup> , 96374 <sup>1</sup> , 96375 <sup>1</sup> , 96376 <sup>1</sup> , 99148 <sup>0</sup> , 99149 <sup>0</sup> , 99150 <sup>0</sup>
<b>62272</b>	00635 <sup>0</sup> , 01935 <sup>0</sup> , 01936 <sup>0</sup> , 02131 <sup>0</sup> , 02161 <sup>0</sup> , 02281 <sup>0</sup> , 02301 <sup>0</sup> , 36000 <sup>1</sup> , 36400 <sup>1</sup> , 36405 <sup>1</sup> , 36406 <sup>1</sup> , 36410 <sup>1</sup> , 36420 <sup>1</sup> , 36425 <sup>1</sup> , 36430 <sup>1</sup> , 36440 <sup>1</sup> , 36600 <sup>1</sup> , 36640 <sup>1</sup> , 37202 <sup>1</sup> , 43752 <sup>1</sup> , 51701 <sup>1</sup> , 51702 <sup>1</sup> , 51703 <sup>1</sup> , 62270 <sup>1</sup> , 62273 <sup>1</sup> , 62310 <sup>1</sup> , 62311 <sup>0</sup> , 64400 <sup>0</sup> , 64402 <sup>0</sup> , 64405 <sup>0</sup> , 64408 <sup>0</sup> , 64410 <sup>0</sup> , 64412 <sup>0</sup> , 64413 <sup>0</sup> , 64415 <sup>0</sup> , 64416 <sup>0</sup> , 64417 <sup>0</sup> , 64418 <sup>0</sup> , 64420 <sup>0</sup> , 64421 <sup>0</sup> , 64425 <sup>0</sup> , 64430 <sup>0</sup> , 64435 <sup>0</sup> , 64445 <sup>0</sup> , 64446 <sup>0</sup> , 64447 <sup>0</sup> , 64448 <sup>0</sup> , 64449 <sup>0</sup> , 64450 <sup>0</sup> , 64479 <sup>0</sup> , 64483 <sup>0</sup> , 64490 <sup>0</sup> , 64493 <sup>0</sup> , 64505 <sup>0</sup> , 64508 <sup>0</sup> , 64510 <sup>0</sup> , 64517 <sup>0</sup> , 64520 <sup>0</sup> , 64530 <sup>0</sup> , 76000 <sup>1</sup> , 76001 <sup>1</sup> , 77001 <sup>1</sup> , 77002 <sup>1</sup> , 93000 <sup>1</sup> , 93005 <sup>1</sup> , 93010 <sup>1</sup> , 93040 <sup>1</sup> , 93041 <sup>1</sup> , 93042 <sup>1</sup> , 93318 <sup>1</sup> , 94002 <sup>1</sup> , 94200 <sup>1</sup> , 94250 <sup>1</sup> , 94680 <sup>1</sup> , 94681 <sup>1</sup> , 94690 <sup>1</sup> , 94770 <sup>1</sup> , 95812 <sup>1</sup> , 95813 <sup>1</sup> , 95816 <sup>1</sup> , 95819 <sup>1</sup> , 95822 <sup>1</sup> , 95829 <sup>1</sup> , 95955 <sup>1</sup> , 96360 <sup>1</sup> , 96365 <sup>1</sup> , 96372 <sup>1</sup> , 96374 <sup>1</sup> , 96375 <sup>1</sup> , 96376 <sup>1</sup> , 99148 <sup>0</sup> , 99149 <sup>0</sup> , 99150 <sup>0</sup> , J0670 <sup>1</sup> , J2001 <sup>1</sup>

**Pub 100**

No Pub 100 references apply to this code or code range.

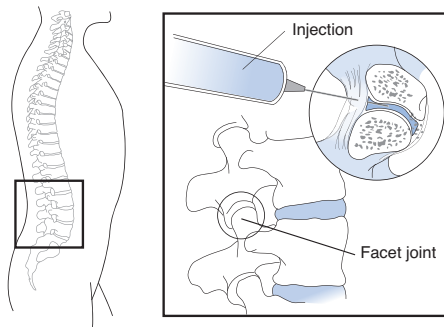
**64493-64495**

- 64493** Injection(s), diagnostic or therapeutic agent, paravertebral facet (zygapophyseal) joint (or nerves innervating that joint) with image guidance (fluoroscopy or CT), lumbar or sacral; single level
- 64494** Injection(s), diagnostic or therapeutic agent, paravertebral facet (zygapophyseal) joint (or nerves innervating that joint) with image guidance (fluoroscopy or CT), lumbar or sacral; second level (List separately in addition to code for primary procedure)
- 64495** Injection(s), diagnostic or therapeutic agent, paravertebral facet (zygapophyseal) joint (or nerves innervating that joint) with image guidance (fluoroscopy or CT), lumbar or sacral; third and any additional level(s) (List separately in addition to code for primary procedure)

**Plain English Description**

Paravertebral facet joints, also called zygapophyseal joints, are located on the back (posterior) of the spine on each side of the vertebra at the point where one vertebra overlaps the next. Facet joint pain may be associated with post laminectomy syndrome or other spine surgery due to destabilization of the spinal joints, scar tissue formation, or recurrent disc herniation. Other causes include spondylosis, spondylolisthesis, and arthritis. Using fluoroscopic or CT guidance, a diagnostic or therapeutic facet joint injection or injection of nerves innervating the joint is performed. The skin overlying the facet joint is prepped and a local anesthetic injected. A spinal needle is directed into the facet joint space until bone or cartilage is encountered. A small amount of contrast material is injected to verify that the needle is correctly positioned. This is followed by injection of a local anesthetic and/or steroid. Diagnostic facet joint injection uses a local anesthetic to identify the specific area generating the pain. If the patient experiences pain relief for a significant period of time following a diagnostic injection, the physician will perform a therapeutic injection on a subsequent date of service using a long acting local anesthetic in conjunction with a steroid. Use 64493 for a single lumbar or sacral facet joint injection; use 64494 for the second level; use 64495 for the third and any additional lumbar or sacral levels injected.

**Injection, diagnostic or therapeutic agent, paravertebral facet joint, lumbar or sacral**



Single lumbar or sacral facet joint injection (64493); second level (64494); third and any additional levels (64495)

**ICD-9-CM Diagnostic Codes (commonly used)**

- 338.0** Central pain syndrome
- 338.4** Chronic pain syndrome
- 721.0** Cervical spondylosis without myelopathy
- 721.1** Cervical spondylosis with myelopathy
- 721.2** Thoracic spondylosis without myelopathy
- 721.3** Lumbosacral spondylosis without myelopathy
- 721.41** Spondylosis with myelopathy thoracic region
- 721.42** Spondylosis with myelopathy lumbar region
- 722.0** Displacement of cervical intervertebral disc without myelopathy
- 722.10** Displacement of lumbar intervertebral disc without myelopathy
- 722.11** Displacement of thoracic intervertebral disc without myelopathy
- 722.31** Schmorl's nodes of thoracic region
- 722.32** Schmorl's nodes of lumbar region
- 722.4** Degeneration of cervical intervertebral disc
- 722.51** Degeneration of thoracic or thoracolumbar intervertebral disc

- 722.52** Degeneration of lumbar or lumbosacral intervertebral disc
- 722.71** Intervertebral disc disorder with myelopathy, cervical region
- 722.72** Intervertebral disc disorder with myelopathy, thoracic region
- 722.73** Intervertebral disc disorder with myelopathy, lumbar region
- 722.83** Postlaminectomy syndrome of lumbar region
- 722.91** Other and unspecified disc disorder of cervical region
- 722.92** Other and unspecified disc disorder of thoracic region
- 722.93** Other and unspecified disc disorder of lumbar region
- 723.0** Spinal stenosis in cervical region
- 723.1** Cervicalgia
- 724.01** Spinal stenosis of thoracic region
- ▲ 724.02** Spinal stenosis of lumbar region, without neurogenic claudication
- 724.1** Pain in thoracic spine
- 724.2** Lumbago
- 724.3** Sciatica
- 724.4** Thoracic or lumbosacral neuritis or radiculitis, unspecified
- 724.6** Disorders of sacrum
- 733.90** Disorder of bone and cartilage, unspecified

**RVU(s)**

Code	Work	PE Facility	PE Non-Facility	MP	Total Facility	Total Non-Facility	Global	Status
<b>64493</b>	1.52	1.10	3.50	0.14	2.76	5.16	000	A
<b>64494</b>	1.00	0.49	1.51	0.08	1.57	2.59	ZZZ	A
<b>64495</b>	1.00	0.52	1.54	0.08	1.60	2.62	ZZZ	A

**Modifiers\***

Code	Mod 50 PAR	Mod 51 PAR	Mod 62 PAR	Mod 66 PAR	Mod 80 PAR
<b>64493</b>	1	2	0	0	2
<b>64494</b>	1	0	0	0	2
<b>64495</b>	1	0	0	0	2

**CCI**

- 64493** 0178T<sup>1</sup>, 0179T<sup>1</sup>, 0180T<sup>1</sup>, 01991<sup>0</sup>, 01992<sup>0</sup>, 0213T<sup>EO</sup>, 0214T<sup>EO</sup>, 0215T<sup>EO</sup>, 0216T<sup>EO</sup>, 0217T<sup>EO</sup>, 0218T<sup>EO</sup>, 20550<sup>1</sup>, 20551<sup>1</sup>, 20552<sup>1</sup>, 20553<sup>1</sup>, 20600<sup>1</sup>, 20605<sup>1</sup>, 20610<sup>1</sup>, 36140<sup>1</sup>, 51701<sup>1</sup>, 51702<sup>1</sup>, 51703<sup>1</sup>, 69990<sup>0</sup>, 72275<sup>1</sup>, 76000<sup>1</sup>, 76001<sup>1</sup>, 76800<sup>1</sup>, 76998<sup>1</sup>, 77001<sup>1</sup>, 77002<sup>1</sup>, 77003<sup>1</sup>, 77012<sup>1</sup>, 77021<sup>1</sup>, 90862<sup>1</sup>, 92585<sup>0</sup>, 93000<sup>1</sup>, 93005<sup>1</sup>, 93010<sup>1</sup>, 93040<sup>1</sup>, 93041<sup>1</sup>, 93042<sup>1</sup>, 93318<sup>1</sup>, 94002<sup>1</sup>, 94200<sup>1</sup>, 94250<sup>1</sup>, 94680<sup>1</sup>, 94681<sup>1</sup>, 94690<sup>1</sup>, 94770<sup>1</sup>, 95812<sup>1</sup>, 95813<sup>1</sup>, 95816<sup>1</sup>, 95819<sup>1</sup>, 95822<sup>0</sup>, 95829<sup>1</sup>, 95860<sup>0</sup>, 95861<sup>0</sup>, 95867<sup>0</sup>, 95868<sup>0</sup>, 95870<sup>0</sup>, 95900<sup>0</sup>, 95904<sup>0</sup>, 95920<sup>0</sup>, 95925<sup>0</sup>, 95926<sup>0</sup>, 95927<sup>0</sup>, 95928<sup>0</sup>, 95929<sup>0</sup>, 95930<sup>0</sup>, 95933<sup>0</sup>, 95934<sup>0</sup>, 95936<sup>0</sup>, 95937<sup>0</sup>, 95955<sup>1</sup>, 96360<sup>1</sup>, 96365<sup>1</sup>, 96372<sup>1</sup>, 96374<sup>1</sup>, 96375<sup>1</sup>, 96376<sup>1</sup>, 99148<sup>0</sup>, 99149<sup>0</sup>, 99150<sup>0</sup>, J0670<sup>1</sup>, J2001<sup>1</sup>
- 64494** 0213T<sup>EO</sup>, 0214T<sup>EO</sup>, 0215T<sup>EO</sup>, 0216T<sup>EO</sup>, 0217T<sup>EO</sup>, 0218T<sup>EO</sup>, 51701<sup>1</sup>, 51702<sup>1</sup>, 51703<sup>1</sup>, 69990<sup>0</sup>, 76000<sup>1</sup>, 76001<sup>1</sup>, 76800<sup>1</sup>, 76998<sup>1</sup>, 77001<sup>1</sup>, 77003<sup>1</sup>, 77012<sup>1</sup>, 77021<sup>1</sup>, 92585<sup>0</sup>, 95822<sup>0</sup>, 95860<sup>0</sup>, 95861<sup>0</sup>, 95867<sup>0</sup>, 95868<sup>0</sup>, 95870<sup>0</sup>, 95900<sup>0</sup>, 95904<sup>0</sup>, 95920<sup>0</sup>, 95925<sup>0</sup>, 95926<sup>0</sup>, 95927<sup>0</sup>, 95928<sup>0</sup>, 95929<sup>0</sup>, 95930<sup>0</sup>, 95933<sup>0</sup>, 95934<sup>0</sup>, 95936<sup>0</sup>, 95937<sup>0</sup>, J0670<sup>1</sup>, J2001<sup>1</sup>
- 64495** 0213T<sup>EO</sup>, 0214T<sup>EO</sup>, 0215T<sup>EO</sup>, 0216T<sup>EO</sup>, 0217T<sup>EO</sup>, 0218T<sup>EO</sup>, 51701<sup>1</sup>, 51702<sup>1</sup>, 51703<sup>1</sup>, 69990<sup>0</sup>, 76000<sup>1</sup>, 76001<sup>1</sup>, 76800<sup>1</sup>, 76998<sup>1</sup>, 77001<sup>1</sup>, 77003<sup>1</sup>, 77012<sup>1</sup>, 77021<sup>1</sup>, 92585<sup>0</sup>, 95822<sup>0</sup>, 95860<sup>0</sup>, 95861<sup>0</sup>, 95867<sup>0</sup>, 95868<sup>0</sup>, 95870<sup>0</sup>, 95900<sup>0</sup>, 95904<sup>0</sup>, 95920<sup>0</sup>, 95925<sup>0</sup>, 95926<sup>0</sup>, 95927<sup>0</sup>, 95928<sup>0</sup>, 95929<sup>0</sup>, 95930<sup>0</sup>, 95933<sup>0</sup>, 95934<sup>0</sup>, 95936<sup>0</sup>, 95937<sup>0</sup>, J0670<sup>1</sup>, J2001<sup>1</sup>

**Pub 100**

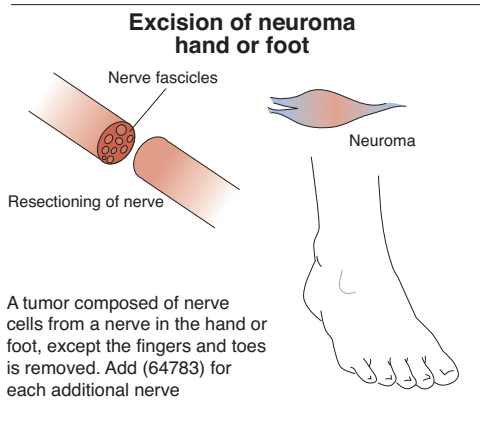
No Pub 100 references apply to this code or code range.

**64782-64783**

- 64782** Excision of neuroma; hand or foot, except digital nerve
- 64783** Excision of neuroma; hand or foot, each additional nerve, except same digit (List separately in addition to code for primary procedure)

**Plain English Description**

The physician removes a tumor composed of nerve cells from a nerve in the hand or foot, except the fingers and toes. Add 64783 for each additional nerve that is operated on during the procedure.



**ICD-9-CM Diagnostic Codes (commonly used)**

- 355.8 Mononeuritis of lower limb, unspecified

**RVU(s)**

Code	Work	PE Facility	PE Non-Facility	MP	Total Facility	Total Non-Facility	Global	Status
64782	6.86	5.45	5.45	0.91	13.22	13.22	090	A
64783	3.71	2.28	2.28	0.45	6.44	6.44	ZZZ	A

**Modifiers\***

Code	Mod 50 PAR	Mod 51 PAR	Mod 62 PAR	Mod 66 PAR	Mod 80 PAR
64782	0	2	1	0	1
64783	0	0	0	0	1

**CCI**

- 64782** 01250<sup>0</sup>, 01320<sup>0</sup>, 01470<sup>0</sup>, 01610<sup>0</sup>, 01710<sup>0</sup>, 01782<sup>0</sup>, 01810<sup>0</sup>, 0213T<sup>0</sup>, 0216T<sup>0</sup>, 0228T<sup>0</sup>, 0230T<sup>0</sup>, 12020<sup>1</sup>, 20526<sup>1</sup>, 20550<sup>1</sup>, 20551<sup>1</sup>, 20552<sup>1</sup>, 20553<sup>1</sup>, 29515<sup>1</sup>, 36000<sup>1</sup>, 36400<sup>1</sup>, 36405<sup>1</sup>, 36406<sup>1</sup>, 36410<sup>1</sup>, 36420<sup>1</sup>, 36425<sup>1</sup>, 36430<sup>1</sup>, 36440<sup>1</sup>, 36600<sup>1</sup>, 36640<sup>1</sup>, 37202<sup>1</sup>, 43752<sup>1</sup>, 51701<sup>1</sup>, 51702<sup>1</sup>, 51703<sup>1</sup>, 62310<sup>0</sup>, 62311<sup>0</sup>, 62318<sup>0</sup>, 62319<sup>0</sup>, 64400<sup>0</sup>, 64402<sup>0</sup>, 64405<sup>0</sup>, 64408<sup>0</sup>, 64410<sup>0</sup>, 64412<sup>0</sup>, 64413<sup>0</sup>, 64415<sup>0</sup>, 64416<sup>0</sup>, 64417<sup>0</sup>, 64418<sup>0</sup>, 64420<sup>0</sup>, 64421<sup>0</sup>, 64425<sup>0</sup>, 64430<sup>0</sup>, 64435<sup>0</sup>, 64445<sup>0</sup>, 64446<sup>0</sup>, 64447<sup>0</sup>, 64448<sup>0</sup>, 64449<sup>0</sup>, 64450<sup>0</sup>, 64455<sup>1</sup>, 64479<sup>0</sup>, 64483<sup>0</sup>, 64490<sup>0</sup>, 64493<sup>0</sup>, 64505<sup>0</sup>, 64508<sup>0</sup>, 64510<sup>0</sup>, 64517<sup>0</sup>, 64520<sup>0</sup>, 64530<sup>0</sup>, 64702<sup>1</sup>, 64704<sup>1</sup>, 64708<sup>1</sup>, 64712<sup>1</sup>, 64713<sup>1</sup>, 64714<sup>1</sup>, 64716<sup>1</sup>, 64718<sup>1</sup>, 64719<sup>1</sup>, 64721<sup>1</sup>, 64722<sup>1</sup>, 64726<sup>1</sup>, 64774<sup>1</sup>, 64795<sup>1</sup>, 69990<sup>0</sup>, 92585<sup>0</sup>, 93000<sup>1</sup>, 93005<sup>1</sup>, 93010<sup>1</sup>, 93040<sup>1</sup>, 93041<sup>1</sup>, 93042<sup>1</sup>, 93318<sup>1</sup>, 94002<sup>1</sup>, 94200<sup>1</sup>, 94250<sup>1</sup>, 94680<sup>1</sup>, 94681<sup>1</sup>, 94690<sup>1</sup>, 94770<sup>1</sup>, 95812<sup>1</sup>, 95813<sup>1</sup>, 95816<sup>1</sup>, 95819<sup>1</sup>, 95822<sup>0</sup>, 95829<sup>1</sup>, 95860<sup>0</sup>, 95861<sup>0</sup>, 95867<sup>0</sup>, 95868<sup>0</sup>, 95870<sup>0</sup>, 95900<sup>0</sup>, 95904<sup>0</sup>, 95920<sup>0</sup>, 95925<sup>0</sup>, 95926<sup>0</sup>, 95927<sup>0</sup>, 95928<sup>0</sup>, 95929<sup>0</sup>, 95930<sup>0</sup>, 95933<sup>0</sup>, 95934<sup>0</sup>, 95936<sup>0</sup>, 95937<sup>0</sup>, 95955<sup>1</sup>, 96360<sup>1</sup>, 96365<sup>1</sup>, 96372<sup>1</sup>, 96374<sup>1</sup>, 96375<sup>1</sup>, 96376<sup>1</sup>, 99148<sup>0</sup>, 99149<sup>0</sup>, 99150<sup>0</sup>
- 64783** 62310<sup>1</sup>, 62311<sup>1</sup>, 92585<sup>0</sup>, 95822<sup>0</sup>, 95860<sup>0</sup>, 95861<sup>0</sup>, 95867<sup>0</sup>, 95868<sup>0</sup>, 95900<sup>0</sup>, 95904<sup>0</sup>, 95920<sup>0</sup>, 95925<sup>0</sup>, 95926<sup>0</sup>, 95927<sup>0</sup>, 95930<sup>0</sup>, 95933<sup>0</sup>, 95934<sup>0</sup>, 95936<sup>0</sup>, 95937<sup>0</sup>

**Pub 100**

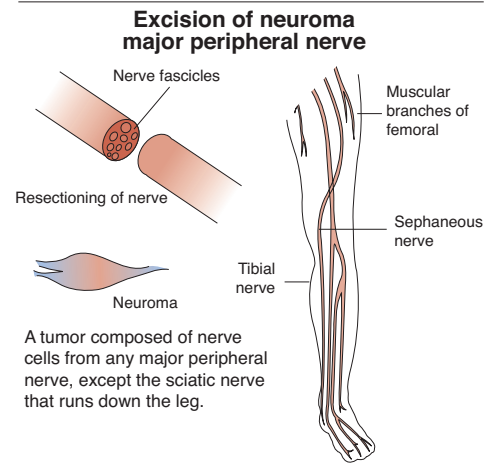
No Pub 100 references apply to this code or code range.

**64784**

- 64784** Excision of neuroma; major peripheral nerve, except sciatic

**Plain English Description**

The physician removes a tumor composed of nerve cells from any major peripheral nerve, except the sciatic nerve that runs down the leg.



**ICD-9-CM Diagnostic Codes (commonly used)**

- 354.2 Lesion of ulnar nerve
- 354.9 Mononeuritis of upper limb, unspecified
- 355.79 Other mononeuritis of lower limb
- 355.8 Mononeuritis of lower limb, unspecified
- 997.61 Neuroma of amputation stump

**RVU(s)**

Code	Work	PE Facility	PE Non-Facility	MP	Total Facility	Total Non-Facility	Global	Status
64784	10.62	8.76	8.76	2.00	21.38	21.38	090	A

**Modifiers\***

Code	Mod 50 PAR	Mod 51 PAR	Mod 62 PAR	Mod 66 PAR	Mod 80 PAR
64784	0	2	0	0	0

**CCI**

- 64784** 01250<sup>0</sup>, 01320<sup>0</sup>, 01470<sup>0</sup>, 01610<sup>0</sup>, 01710<sup>0</sup>, 01782<sup>0</sup>, 01810<sup>0</sup>, 0213T<sup>0</sup>, 0216T<sup>0</sup>, 0228T<sup>0</sup>, 0230T<sup>0</sup>, 36000<sup>1</sup>, 36400<sup>1</sup>, 36405<sup>1</sup>, 36406<sup>1</sup>, 36410<sup>1</sup>, 36420<sup>1</sup>, 36425<sup>1</sup>, 36430<sup>1</sup>, 36440<sup>1</sup>, 36600<sup>1</sup>, 36640<sup>1</sup>, 37202<sup>1</sup>, 43752<sup>1</sup>, 51701<sup>1</sup>, 51702<sup>1</sup>, 51703<sup>1</sup>, 62310<sup>0</sup>, 62311<sup>0</sup>, 62318<sup>0</sup>, 62319<sup>0</sup>, 64400<sup>0</sup>, 64402<sup>0</sup>, 64405<sup>0</sup>, 64408<sup>0</sup>, 64410<sup>0</sup>, 64412<sup>0</sup>, 64413<sup>0</sup>, 64415<sup>0</sup>, 64416<sup>0</sup>, 64417<sup>0</sup>, 64418<sup>0</sup>, 64420<sup>0</sup>, 64421<sup>0</sup>, 64425<sup>0</sup>, 64430<sup>0</sup>, 64435<sup>0</sup>, 64445<sup>0</sup>, 64446<sup>0</sup>, 64447<sup>0</sup>, 64448<sup>0</sup>, 64449<sup>0</sup>, 64450<sup>0</sup>, 64479<sup>0</sup>, 64483<sup>0</sup>, 64490<sup>0</sup>, 64493<sup>0</sup>, 64505<sup>0</sup>, 64508<sup>0</sup>, 64510<sup>0</sup>, 64517<sup>0</sup>, 64520<sup>0</sup>, 64530<sup>0</sup>, 64702<sup>1</sup>, 64704<sup>1</sup>, 64708<sup>1</sup>, 64712<sup>1</sup>, 64713<sup>1</sup>, 64714<sup>1</sup>, 64716<sup>1</sup>, 64718<sup>1</sup>, 64719<sup>1</sup>, 64721<sup>1</sup>, 64722<sup>1</sup>, 64726<sup>1</sup>, 64795<sup>1</sup>, 64856<sup>1</sup>, 64857<sup>1</sup>, 69990<sup>0</sup>, 92585<sup>0</sup>, 93000<sup>1</sup>, 93005<sup>1</sup>, 93010<sup>1</sup>, 93040<sup>1</sup>, 93041<sup>1</sup>, 93042<sup>1</sup>, 93318<sup>1</sup>, 94002<sup>1</sup>, 94200<sup>1</sup>, 94250<sup>1</sup>, 94680<sup>1</sup>, 94681<sup>1</sup>, 94690<sup>1</sup>, 94770<sup>1</sup>, 95812<sup>1</sup>, 95813<sup>1</sup>, 95816<sup>1</sup>, 95819<sup>1</sup>, 95822<sup>0</sup>, 95829<sup>1</sup>, 95860<sup>0</sup>, 95861<sup>0</sup>, 95867<sup>0</sup>, 95868<sup>0</sup>, 95870<sup>0</sup>, 95900<sup>0</sup>, 95904<sup>0</sup>, 95920<sup>0</sup>, 95925<sup>0</sup>, 95926<sup>0</sup>, 95927<sup>0</sup>, 95928<sup>0</sup>, 95929<sup>0</sup>, 95930<sup>0</sup>, 95933<sup>0</sup>, 95934<sup>0</sup>, 95936<sup>0</sup>, 95937<sup>0</sup>, 95955<sup>1</sup>, 96360<sup>1</sup>, 96365<sup>1</sup>, 96372<sup>1</sup>, 96374<sup>1</sup>, 96375<sup>1</sup>, 96376<sup>1</sup>, 99148<sup>0</sup>, 99149<sup>0</sup>, 99150<sup>0</sup>

**Pub 100**

No Pub 100 references apply to this code or code range.

\*\* See Appendix for CCI information

\* See Appendix for Modifier Rules

● New Code

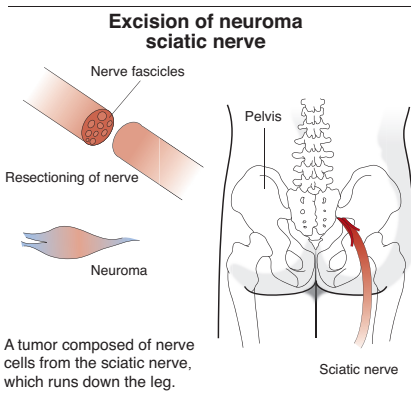
▲ Revised Code

# 64786

**64786** Excision of neuroma; sciatic nerve

## Plain English Description

The physician removes a tumor composed of nerve cells from the sciatic nerve, which runs down the leg.



### ICD-9-CM Diagnostic Codes (commonly used)

- 355.0 Lesion of sciatic nerve
- 997.61 Neuroma of amputation stump

### RVU(s)

Code	Work	PE Facility	PE Non-Facility	MP	Total Facility	Total Non-Facility	Global	Status
64786	16.25	12.10	12.10	3.20	31.55	31.55	090	A

### Modifiers\*

Code	Mod 50 PAR	Mod 51 PAR	Mod 62 PAR	Mod 66 PAR	Mod 80 PAR
64786	0	2	0	0	2

### CCI

- 64786** 0213T<sup>0</sup>, 0216T<sup>0</sup>, 0228T<sup>0</sup>, 0230T<sup>0</sup>, 36000<sup>1</sup>, 36400<sup>1</sup>, 36405<sup>1</sup>, 36406<sup>1</sup>, 36410<sup>1</sup>, 36420<sup>1</sup>, 36425<sup>1</sup>, 36430<sup>1</sup>, 36440<sup>1</sup>, 36600<sup>1</sup>, 36640<sup>1</sup>, 37202<sup>1</sup>, 43752<sup>1</sup>, 51701<sup>1</sup>, 51702<sup>1</sup>, 51703<sup>1</sup>, 62310<sup>0</sup>, 62311<sup>0</sup>, 62318<sup>0</sup>, 62319<sup>0</sup>, 64400<sup>0</sup>, 64402<sup>0</sup>, 64405<sup>0</sup>, 64408<sup>0</sup>, 64410<sup>0</sup>, 64412<sup>0</sup>, 64413<sup>0</sup>, 64415<sup>0</sup>, 64416<sup>0</sup>, 64417<sup>0</sup>, 64418<sup>0</sup>, 64420<sup>0</sup>, 64421<sup>0</sup>, 64425<sup>0</sup>, 64430<sup>0</sup>, 64435<sup>0</sup>, 64445<sup>0</sup>, 64446<sup>0</sup>, 64447<sup>0</sup>, 64448<sup>0</sup>, 64449<sup>0</sup>, 64450<sup>0</sup>, 64479<sup>0</sup>, 64483<sup>0</sup>, 64490<sup>0</sup>, 64493<sup>0</sup>, 64505<sup>0</sup>, 64508<sup>0</sup>, 64510<sup>0</sup>, 64517<sup>0</sup>, 64520<sup>0</sup>, 64530<sup>0</sup>, 64702<sup>1</sup>, 64704<sup>1</sup>, 64708<sup>1</sup>, 64712<sup>1</sup>, 64713<sup>1</sup>, 64714<sup>1</sup>, 64716<sup>1</sup>, 64718<sup>1</sup>, 64719<sup>1</sup>, 64721<sup>1</sup>, 64722<sup>1</sup>, 64726<sup>1</sup>, 64795<sup>1</sup>, 64858<sup>1</sup>, 69990<sup>0</sup>, 92585<sup>0</sup>, 93000<sup>1</sup>, 93005<sup>1</sup>, 93010<sup>1</sup>, 93040<sup>1</sup>, 93041<sup>1</sup>, 93042<sup>1</sup>, 93318<sup>1</sup>, 94002<sup>1</sup>, 94200<sup>1</sup>, 94250<sup>1</sup>, 94680<sup>1</sup>, 94681<sup>1</sup>, 94690<sup>1</sup>, 94770<sup>1</sup>, 95812<sup>1</sup>, 95813<sup>1</sup>, 95816<sup>1</sup>, 95819<sup>1</sup>, 95822<sup>0</sup>, 95829<sup>1</sup>, 95860<sup>0</sup>, 95861<sup>0</sup>, 95867<sup>0</sup>, 95868<sup>0</sup>, 95870<sup>0</sup>, 95900<sup>0</sup>, 95904<sup>0</sup>, 95920<sup>0</sup>, 95925<sup>0</sup>, 95926<sup>0</sup>, 95927<sup>0</sup>, 95928<sup>0</sup>, 95929<sup>0</sup>, 95930<sup>0</sup>, 95933<sup>0</sup>, 95934<sup>0</sup>, 95936<sup>0</sup>, 95937<sup>0</sup>, 95955<sup>1</sup>, 96360<sup>1</sup>, 96365<sup>1</sup>, 96372<sup>1</sup>, 96374<sup>1</sup>, 96375<sup>1</sup>, 96376<sup>1</sup>, 99148<sup>0</sup>, 99149<sup>0</sup>, 99150<sup>0</sup>

### Pub 100

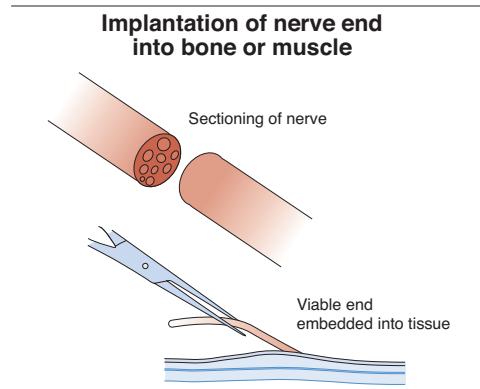
No Pub 100 references apply to this code or code range.

# 64787

**64787** Implantation of nerve end into bone or muscle (List separately in addition to neuroma excision)

## Plain English Description

The physician implants the end of a nerve into a bone or muscle. Add this code to a procedure in which the physician removes a tumor composed of nerve cells from a nerve.



The end of a nerve is implanted into a bone or muscle.

### ICD-9-CM Diagnostic Codes (commonly used)

Refer to the primary procedure for associated ICD-9-CM diagnostic codes.

### RVU(s)

Code	Work	PE Facility	PE Non-Facility	MP	Total Facility	Total Non-Facility	Global	Status
64787	4.29	2.26	2.26	0.68	7.23	7.23	ZZZ	A

### Modifiers\*

Code	Mod 50 PAR	Mod 51 PAR	Mod 62 PAR	Mod 66 PAR	Mod 80 PAR
64787	0	0	0	0	0

### CCI

- 64787** 62310<sup>1</sup>, 62311<sup>1</sup>, 92585<sup>0</sup>, 95822<sup>0</sup>, 95860<sup>0</sup>, 95861<sup>0</sup>, 95867<sup>0</sup>, 95868<sup>0</sup>, 95900<sup>0</sup>, 95904<sup>0</sup>, 95920<sup>0</sup>, 95925<sup>0</sup>, 95926<sup>0</sup>, 95927<sup>0</sup>, 95930<sup>0</sup>, 95933<sup>0</sup>, 95934<sup>0</sup>, 95936<sup>0</sup>, 95937<sup>0</sup>

### Pub 100

No Pub 100 references apply to this code or code range.

**Volume 2 – Alphabetic Index**

The Alphabetic Index also makes use of certain instructional conventions to help guide the user in appropriate code selection and sequencing.

**Special Instruction Notes**

The “*see*” instruction directs the user to another main term to find the correct code.

**Example:****Crisis**

Vascular – *see* Disease, cerebrovascular, acute

The “*see also*” instruction directs the user to also refer to the suggested main term for additional information on the condition or disease.

**Example:**

**Crohn’s disease** (*see also* Enteritis, regional) 555.9

**Punctuation**

[ / ] Slanted brackets identify situations when more than one code is needed to correctly code the condition. The index lists the codes in sequencing order with the secondary code in brackets.

**Example:**

**Mononeuropathy** (*see also* Mononeuritis) 355.9

diabetic NEC 250.6x [355.9]

( ) Parentheses enclose nonessential modifiers which may or may not be used with the diagnosis or condition listed in the index. These nonessential modifiers may help in clarifying the documentation, but the presence or absence of any of them does not change the code number selection.

**Example:**

**Cyst** (mucus) (retention) (serous) (simple)

**ICD-9-CM Coding**

ICD-9-CM diagnostic coding is a necessity when submitting claims to payers for reimbursement. It also identifies the reason for the patient’s visit to the provider and will indicate the medical necessity of the services rendered by the provider. The following are guidelines that instruct on ICD-9-CM diagnostic coding:

1. Consult Volume 2, Alphabetic Index to ICD-9-CM, first. Locate the main entry term. The Alphabetic Index is arranged by condition.
2. Refer to Volume 1 of the ICD-9-CM, locating the selected code in the Tabular List. Review any exclusion notes or other instructions for proper coding before final selection of codes. Also, refer to the addenda for any new diagnostic codes or corrections.
3. Read and apply all other conventions used in the Tabular List and Alphabetic Index.
4. Code only confirmed diagnoses. Do not code “suspected,” “rule out” or “probable” diagnoses. If there is not a confirmed diagnosis for outpatient service, code the symptom(s). For inpatient, short-term, acute care, and long term care coding, if only a “suspected,” “rule-out,” or “probable” diagnosis is listed, it should be coded as if it existed or was established.
5. Code only the confirmed diagnoses if both the diagnoses and symptoms are documented in the medical record, except

when the diagnoses and symptoms are not related, then code both.

6. Code to the level of highest specificity. Check to see if the diagnostic code consists of three, four, or five numbers. Truncated codes will be denied if a claim is submitted without all of the digits.
7. Chronic diseases and conditions treated on an ongoing basis may be coded as many times as the patient receives treatment and care for the condition(s).
8. Code all documented conditions that coexist at the time of the patient encounter that require or affect patient care, treatment, or management.

**2011 Neurology/Neurosurgery Diagnostic Code Index****Abnormal**

- gait 781.2
- involuntary movement 781.0
- nonspecific
  - auditory function studies 794.15
  - echoencephalogram 794.01
  - electroencephalogram (EEG) 794.02
  - electromyogram (EMG) 794.17
  - electro-oculogram (EOG) 794.12
- findings
  - cerebrospinal fluid 792.0
  - radiological and other examinations
  - musculoskeletal system 793.7
  - other body structure 793.99
  - skull and head 793.0
- oculomotor studies 794.14
- response to unspecified nerve stimulation 794.10
- retinal function studies 794.11
- vestibular function studies 794.16
- visually evoked potential 794.13
- posture 781.92
- results, function study
  - brain, central nervous system, NOS 794.00
  - other 794.09
  - peripheral nervous system, special senses, other 794.19

**Abscess**

- intracranial 324.0
  - and intraspinal, site NOS 324.9
- intraspinal 324.1

**Absence of vertebra, congenital 756.13****Abuse, nondependent**

- alcohol
  - continuous drinking behavior 305.01
  - episodic drinking behavior 305.02
  - in remission 305.03
  - unspecified drinking behavior 305.00
- amphetamine, related acting sympathomimetic
  - continuous use 305.71
  - episodic use 305.72
  - in remission 305.73
  - unspecified use 305.70

***Jurisdiction D Information***

Claims, Correspondence, Redetermination Requests, Refunds, FOIA, etc.

**Noridian Administrative Services**

PO Box 6727  
Fargo ND 58108-6727  
Electronic Funds Transfer (EFT) Forms

**Noridian Administrative Services**

PO Box 6728  
Fargo ND 58108-6728

***Benefit Protection*****Noridian Administrative Services**

PO Box 6736  
Fargo ND 58108-6736

***Advance Determination of Medicare Coverage (ADMC)*****IntegriGuard, LLC**

2301 N 117 Ave Suite 200  
Omaha NE 68164  
Fax: 1-402-498-2306

***Reconsiderations/Administrative Law Judge (ALJ) Hearing Requests*****RiverTrust Solutions**

PO Box 180208  
Chattanooga, TN 37401-7208

***ALJ Status Inquiries*****Office of Medicare Hearings and Appeals (OMHA)**

BP Tower & Garage  
200 Public Square Suite 1300  
Cleveland OH 44114-2316

***Jurisdiction D Durable Medical Equipment*****Benefit Integrity Support Center (DME-BISC)**

Richard Kensic, Benefit Integrity Manager  
DME-BISC  
PO Box 51152  
Los Angeles CA 90051-5452  
[www.integriguard.org/gov/psc/dme-bisc.html](http://www.integriguard.org/gov/psc/dme-bisc.html)

***Additional Resources*****Supplier Enrollment/Inquiries**

National Supplier Clearinghouse  
PO Box 100142  
Columbia SC 29202-3142

***Overnight Mailing Address*****National Supplier Clearinghouse**

2300 Springdale Drive Bldg 1  
Camden SC 29020  
Phone: 1-866-238-9652  
[www.palmettogba.com/nsc](http://www.palmettogba.com/nsc)

The supplier enrollment form, CMS 855S, is available at [www.cms.gov/cmsforms/downloads/cms855S.pdf](http://www.cms.gov/cmsforms/downloads/cms855S.pdf)

***Coding Assistance*****Statistical Analysis Durable Medical Equipment Regional Contractor (SADMERC)**

Palmetto Government Benefits Administrators  
Medicare SADMERC Operations  
PO Box 100143  
Columbia SC 29202-3143  
Phone: 1-877-735-1326  
[www.palmettogba.com/sadmerc](http://www.palmettogba.com/sadmerc)

**2011 Neurology/Neurosurgery HCPCS Level II Code Index****Adaptor/extension, pacing lead/neurostimulator lead (implantable) C1883****Administration set, with small volume**

filtered pneumatic nebulizer A7006  
nonfiltered pneumatic nebulizer  
disposable A7003  
non-disposable A7005

**Adrenal tissue transplant, brain S2103****Aerosol mask, with DME nebulizer A7015****Angiography**

spinal canal and contents C8931-C8933  
upper arm C8934-C8966

**Antibiotic prophylaxis**

1 hour to incision time (two hours for vancomycin) measure  
clinician documented  
patient not eligible G8154  
patient not documented to have received G8153

**Apnea monitor electrodes A4556****Azithromycin dihydrate, oral, Q0144****Biofeedback device, electromyography (EMG)E0746****Bottle, reservoir non-disposable, with large volume ultrasonic nebulizer A7009****Botulinum toxin**

type A per unit J0585  
type B, per 100 units J0587

**Canister**

used with suction pump  
disposable A7000  
non-disposable A7001

**Catheter**

electrophysiology,diagnostic  
ablation  
3D or vector mapping C1732  
other than 3D or vector mapping, other than cool-tip C1733  
other than 3D mapping  
19 or fewer electrodes C1730  
20 or more electrodes) C1731  
intradiscal C1754  
intraspinial C1755

**Consultation**

telehealth  
inpatient  
initial