

International Classification
of Diseases 10th Revision
Clinical Modification

ICD-10-CM

Draft **2011**

Table of Contents

Introduction to ICD-10-CM	ii	Chapter 6 — Diseases of the Nervous System G00-G99	93
Development of ICD-10-CM	ii	Chapter 7 — Diseases of the Eye and Adnexa H00-H59	109
The ICD-9-CM Coordination and Maintenance Committee	ii	Chapter 8 — Diseases of the Ear and Mastoid Process H60-H95	141
General Equivalency Mapping – ICD-9-CM to ICD-10-CM	ii	Chapter 9 — Diseases of the Circulatory System I00-I99	152
The ICD-10-CM Code Set Improvements	ii	Chapter 10 — Diseases of the Respiratory System J00-J99	185
How to Use the ICD-10-CM	iii	Chapter 11 — Diseases of the Digestive System K00-K94	196
Structure of ICD-10-CM	iii	Chapter 12 — Diseases of the Skin and Subcutaneous Tissue L00-L99	214
Tabular List of Diseases and Injuries	iii	Chapter 13 — Diseases of the Musculoskeletal System and Connective Tissue M00-M99	231
Alphabetic Index of Diseases and Injuries	iii	Chapter 14 — Diseases of the genitourinary system N00-N99	308
ICD-10-CM Official Guidelines and Reporting Draft	1	Chapter 15 — Pregnancy, Childbirth and the Puerperium O00-O99	322
Section I: ICD-10-CM Conventions, General Coding Guidelines and Chapter Specific Guidelines	1	Chapter 16 — Certain Conditions Originating in the Perinatal Period P00-P96	351
Section II: Selection of Principle Diagnosis	26	Chapter 17 — Congenital Malformations, Deformations and Chromosomal Abnormalities Q00-Q99	360
Section III: Reporting Additional Diagnosis	27	Chapter 18 — Symptoms, Signs and Abnormal Clinical and Laboratory Findings, Not Elsewhere Classified R00-R99	376
Section IV: Diagnostic Coding and Reporting Guidelines for Outpatient Services	27	Chapter 19 — Injury, Poisoning and Certain Other Consequences of External Causes S00-T88	390
Alphabetic Index	31	Chapter 20 — External causes of morbidity V00-Y99	608
Neoplasms Table	327	Chapter 21 — Factors Influencing Health Status and Contact with Health Services Z00-Z99)	680
Table of Drugs and Chemicals	347		
External Causes Index	397		
Tabular List of Diseases and Injuries	1		
Chapter 1 — Certain Infectious and Parasitic Diseases A00-B99	1		
Chapter 2 — Neoplasms C00-D49	21		
Chapter 3 — Diseases of the Blood and Blood-Forming Organs and Certain Disorders Involving the Immune Mechanism D50-D89	51		
Chapter 4 — Endocrine, Nutritional and Metabolic Diseases E00-E89	59		
Chapter 5 — Mental and Behavioral Disorders F01-F99	76		

ICD-10-CM Official Guidelines/Reporting

The Centers for Medicare and Medicaid Services (CMS) and the National Center for Health Statistics (NCHS), two departments within the U.S. Federal Government's Department of Health and Human Services (DHHS) provide the following guidelines for coding and reporting using the *International Classification of Diseases, 10th Revision, Clinical Modification* (ICD-10-CM). These guidelines should be used as a companion document to the official version of the ICD-10-CM as published on the NCHS website. The ICD-10-CM is a morbidity classification published by the United States for classifying diagnoses and reason for visits in all health care settings. The ICD-10-CM is based on the ICD-10, the statistical classification of disease published by the World Health Organization (WHO).

These guidelines have been approved by the four organizations that make up the Cooperating Parties for the ICD-10-CM: the American Hospital Association (AHA), the American Health Information Management Association (AHIMA), CMS, and NCHS.

These guidelines are a set of rules that have been developed to accompany and complement the official conventions and instructions provided within the ICD-10-CM itself. The instructions and conventions of the classification take precedence over guidelines. These guidelines are based on the coding and sequencing instructions in Volumes I, and II of ICD-10-CM, but provide additional instruction. Adherence to these guidelines when assigning ICD-10-CM diagnosis and procedure codes is required under the Health Insurance Portability and Accountability Act (HIPAA). The diagnosis codes (Volumes 1-2) have been adopted under HIPAA for all healthcare settings. A joint effort between the healthcare provider and the coder is essential to achieve complete and accurate documentation, code assignment, and reporting of diagnoses and procedures. These guidelines have been developed to assist both the healthcare provider and the coder in identifying those diagnoses and procedures that are to be reported. The importance of consistent, complete documentation in the medical record cannot be overemphasized. Without such documentation accurate coding cannot be achieved. The entire record should be reviewed to determine the specific reason for the encounter and the conditions treated.

The term encounter is used for all settings, including hospital admissions. In the context of these guidelines, the term provider is used throughout the guidelines to mean physician or any qualified health care practitioner who is legally accountable for establishing the patient's diagnosis. Only this set of guidelines, approved by the Cooperating Parties, is official.

The guidelines are organized into sections. Section I includes the structure and conventions of the classification and general guidelines that apply to the entire classification, and chapter-specific guidelines that correspond to the chapters as they are arranged in the classification. Section II includes guidelines for selection of principal diagnosis for non-outpatient settings. Section III includes guidelines for reporting additional diagnoses in non-outpatient settings. Section IV is for outpatient coding and reporting. It is necessary to review all sections of the guidelines to fully understand all of the rules and instructions needed to code properly.

Section I. Conventions, general coding guidelines and chapter specific guidelines

The conventions, general guidelines and chapter-specific guidelines are applicable to all health care settings unless otherwise indicated. The conventions and instructions of the classification take precedence over guidelines.

A. Conventions for the ICD-10-CM

The conventions for the ICD-10-CM are the general rules for use of the classification independent of the guidelines. These conventions are

incorporated within the Alphabetic Index and Tabular List of the ICD-10-CM as instructional notes.

1. The Alphabetic Index and Tabular List

The ICD-10-CM is divided into the Index, an alphabetical list of terms and their corresponding code, and the Tabular List, a chronological list of codes divided into chapters based on body system or condition. The Alphabetic Index consists of the following parts: the Index of Diseases and Injury, the Index of External Causes of Injury, the Table of Neoplasms and the Table of Drugs and Chemicals.

See Section I.C.2. General guidelines

See Section I.C.19. Adverse effects, poisoning, underdosing and toxic effects

The conventions for the ICD-10-CM are the general rules for use of the classification independent of the guidelines. These conventions are incorporated within the Index and Tabular of the ICD-10-CM as instructional notes. The conventions are as follows:

2. Format and Structure:

The ICD-10-CM Tabular List contains categories, subcategories and codes. Characters for categories, subcategories and codes may be either a letter or a number. All categories are 3 characters. A three-character category that has no further subdivision is equivalent to a code. Subcategories are either 4 or 5 characters. Codes may be 4, 5, 6 or 7 characters. That is, each level of subdivision after a category is a subcategory. The final level of subdivision is a code. All codes in the Tabular List of the official version of the ICD-10-CM are in bold. Codes that have applicable 7th characters are still referred to as codes, not subcategories. A code that has an applicable 7th character is considered invalid without the 7th character. The ICD-10-CM uses an indented format for ease in reference

3. Use of codes for reporting purposes

For reporting purposes only codes are permissible, not categories or subcategories, and any applicable 7th character is required.

4. Placeholder character

The ICD-10-CM utilizes a placeholder character "X". The "X" is used as a 5th character placeholder at certain 6 character codes to allow for future expansion. An example of this is at the poisoning, adverse effect and underdosing codes, categories T36-T50. Where a placeholder exists, the X must be used in order for the code to be considered a valid code.

5. 7th Characters

Certain ICD-10-CM categories have applicable 7th characters. The applicable 7th character is required for all codes within the category, or as the notes in the Tabular List instruct. The 7th character must always be the 7th character in the data field. If a code that requires a 7th character is not 6 characters, a placeholder X must be used to fill in the empty characters.

6. Abbreviations

a. Index abbreviations

This abbreviation in the Alphabetic Index represents "other specified". When a specific code is not available for a condition, the Alphabetic Index directs the coder to the "other specified" code in the Tabular List.

NOS “Not otherwise specified”

This abbreviation is the equivalent of unspecified.

b. Tabular abbreviations

NEC “Not elsewhere classifiable”

This abbreviation in the Tabular List represents “other specified”. When a specific code is not available for a condition the Tabular List includes an NEC entry under a code to identify the code as the “other specified” code.

NOS “Not otherwise specified”

This abbreviation is the equivalent of unspecified.

7. Punctuation

[] Brackets are used in the Tabular List to enclose synonyms, alternative wording or explanatory phrases. Brackets are used in the Alphabetic Index to identify manifestation codes

() Parentheses are used in both the Alphabetic Index and Tabular List to enclose supplementary words that may be present or absent in the statement of a disease or procedure without affecting the code number to which it is assigned. The terms within the parentheses are referred to as nonessential modifiers.

:

Colons are used in the Tabular List after an incomplete term which needs one or more of the modifiers following the colon to make it assignable to a given category.

8. Use of “and”

When the term “and” is used in a narrative statement it represents and/or.

9. Other and Unspecified codes

a. “Other” codes

Codes titled “other” or “other specified” are for use when the information in the medical record provides detail for which a specific code does not exist. Alphabetic Index entries with NEC in the line designate “other” codes in the Tabular List. These Alphabetic Index entries represent specific disease entities for which no specific code exists so the term is included within an “other” code.

b. “Unspecified” codes

Codes (usually a code with a 4th digit 9 or 5th digit 0 for diagnosis codes) titled “unspecified” are for use when the information in the medical record is insufficient to assign a more specific code. For those categories for which an unspecified code is not provided, the “other specified” code may represent both other and unspecified.

10. Includes Notes

This note appears immediately under a three-digit code title to further define, or give examples of, the content of the category.

11. Inclusion terms

List of terms is included under some codes. These terms are the conditions for which that code is to be used. The terms may be synonyms of the code title, or, in the case of “other specified” codes, the terms are a list of the various conditions assigned to that code. The inclusion terms are not necessarily exhaustive. Additional terms found only in the Alphabetic Index may also be assigned to a code.

12. Excludes Notes

The ICD-10-CM has two types of excludes notes. Each type of note has a different definition for use but they are all similar in that they indicate that codes excluded from each other are independent of each other.

a. Excludes1

A type 1 Excludes note is a pure excludes note. It means “NOT CODED HERE!” An Excludes1 note indicates that the code excluded should never be used at the same time as the code above the Excludes1 note. An Excludes1 is used when two conditions cannot occur together, such as a congenital form versus an acquired form of the same condition.

b. Excludes2

A type 2 excludes note represents “Not included here”. An excludes2 note indicates that the condition excluded is not part of the condition represented by the code, but a patient may have both conditions at the same time. When an Excludes2 note appears under a code, it is acceptable to use both the code and the excluded code together, when appropriate.

13. Etiology/manifestation convention (“code first”, “use additional code” and “in diseases classified elsewhere” notes)

Certain conditions have both an underlying etiology and multiple body system manifestations due to the underlying etiology. For such conditions, the ICD-10-CM has a coding convention that requires the underlying condition be sequenced first followed by the manifestation. Wherever such a combination exists, there is a “use additional code” note at the etiology code, and a “code first” note at the manifestation code. These instructional notes indicate the proper sequencing order of the codes, etiology followed by manifestation.

In most cases the manifestation codes will have in the code title, “in diseases classified elsewhere.” Codes with this title are a component of the etiology/ manifestation convention. The code title indicates that it is a manifestation code. “In diseases classified elsewhere” codes are never permitted to be used as first-listed or principal diagnosis codes. They must be used in conjunction with an underlying condition code and they must be listed following the underlying condition. See category F02, Dementia in other diseases classified elsewhere, for an example of this convention.

There are manifestation codes that do not have “in diseases classified elsewhere” in the title. For such codes a “use additional code” note will still be present and the rules for sequencing apply. I

n addition to the notes in the Tabular List, these conditions also have a specific Alphabetic Index entry structure. In the Alphabetic Index both conditions are listed together with the etiology code first followed by the manifestation codes in brackets. The code in brackets is always to be sequenced second.

An example of the etiology/manifestation convention is dementia in Parkinson’s disease. In the Alphabetic Index, code G20 is listed first, followed by code F02.80 or F02.81 in brackets. Code G20 represents the underlying etiology, Parkinson’s disease, and must be sequenced first, whereas codes F02.80 and F02.81 represent the manifestation of dementia in diseases classified elsewhere, with or without behavioral disturbance.

“Code first” and “Use additional code” notes are also used as sequencing rules in the classification for certain codes that are not part of an etiology/ manifestation combination.

See Section I.B.7. Multiple coding for a single condition.

14. “And”

The word “and” should be interpreted to mean either “and” or “or” when it appears in a title.

15. “With”

The word “with” should be interpreted to mean “associated with” or “due to” when it appears in a code title, the Alphabetic Index, or an instructional note in the Tabular List. The word “with” in the Alphabetic Index is sequenced immediately following the main term, not in alphabetical order.

Admission (for) – *continued*
 fitting (of) – *continued*
 cystostomy device Z46.6
 dental prosthesis Z46.3
 dentures Z46.3
 device NEC
 abdominal Z46.89
 nervous system Z46.2
 implanted – *see* Admission, adjustment, device, implanted, nervous system
 orthodontic Z46.4
 prosthetic Z44.9
 breast Z44.3
 dental Z46.3
 eye Z44.2
 substitution
 auditory Z46.2
 implanted – *see* Admission, adjustment, device, implanted, hearing device
 nervous system Z46.2
 implanted – *see* Admission, adjustment, device, implanted, nervous system
 visual Z46.2
 implanted Z45.31
 hearing aid Z46.1
 ileostomy device Z46.89
 intestinal appliance or device NEC Z46.89
 neuropacemaker (brain) (peripheral nerve) (spinal cord) Z46.2
 implanted Z45.42
 orthodontic device Z46.4
 orthopedic device (brace) (cast) (shoes) Z46.89
 prosthesis Z44.9
 arm – *see* Admission, adjustment, artificial, arm
 breast Z44.3
 dental Z46.3
 eye Z44.2
 leg – *see* Admission, adjustment, artificial, leg
 specified type NEC Z44.8
 spectacles Z46.0
 follow-up examination Z09
 intrauterine device management Z30.431
 initial prescription Z30.014
 mental health evaluation Z00.8
 requested by authority Z04.6
 observation – *see* Observation
 Papanicolaou smear, cervix Z12.4
 for suspected malignant neoplasm Z12.4
 plastic surgery, cosmetic NEC Z41.1
 postpartum observation
 immediately after delivery Z39.0
 routine follow-up Z39.2
 poststerilization (for restoration) Z31.0
 aftercare Z31.42
 plastic and reconstructive surgery following
 medical procedure or healed injury NEC Z42.8
 procreative management Z31.9
 prophylactic (measure)
 organ removal Z40.00
 breast Z40.01
 ovary Z40.02
 specified organ NEC Z40.09
 testes Z40.09
 vaccination Z23
 psychiatric examination (general) Z00.8
 requested by authority Z04.6
 radiation therapy (antineoplastic) Z51.0
 reconstructive surgery following medical
 procedure or healed injury NEC Z42.8
 removal of
 cystostomy catheter Z43.5
 drains Z48.03
 dressing (nonsurgical) Z48.00
 intrauterine contraceptive device Z30.432
 neuropacemaker (brain) (peripheral nerve) (spinal cord) Z46.2
 implanted Z45.42
 staples Z48.02
 surgical dressing Z48.01
 sutures Z48.02
 ureteral stent Z46.6
 respirator/ventilator use during power failure (Z99.12)
 restoration of organ continuity (poststerilization) Z31.0
 aftercare Z31.42
 sensitivity test – *see also* Test, skin
 allergy NEC Z01.82
 Mantoux Z11.1
 tuboplasty following previous sterilization Z31.0
 aftercare Z31.42

Admission (for) – *continued*
 vasoplasty following previous sterilization Z31.0
 aftercare Z31.42
 vision examination Z01.00
 with abnormal findings Z01.01
 waiting period for admission to other facility Z75.1
Adnexitis (suppurative) – *see* Salpingo-oophoritis
Adolescent X-linked adrenoleukodystrophy E71.521
Adrenal (gland) – *see* condition
Adrenalism, tuberculous A18.7
Adrenatitis, adenitis E27.8
 autoimmune E27.1
 meningococcal, hemorrhagic A39.1
Adrenarcho, premature E27.0
Adrenocortical syndrome – *see* Cushing's syndrome
Adrenogenital syndrome E25.9
 acquired E25.8
 congenital E25.0
 salt loss E25.0
Adrenogenitalism, congenital E25.0
Adrenoleukodystrophy E71.529
 neonatal E71.511
 X-linked E71.529
 Addison only phenotype E71.528
 Addison-Schilder E71.528
 adolescent E71.521
 adrenomyeloneuropathy E71.522
 childhood cerebral E71.520
 other specified E71.528
Adrenomyeloneuropathy E71.522
Adventitious bursa – *see* Bursopathy, specified type
 NEC
Adverse effect – *see* Table of drugs and chemicals, categories T36-T50, with 6th character 5
Advice – *see* Counseling
Adynamia (episodica) (hereditary) (periodic) G72.3
Aeration lung imperfect, newborn – *see* Atelectasis
Aerobullosis T70.3
Aerocele – *see* Embolism, air
Aerodermectasia
 subcutaneous (traumatic) T79.7
Aerodontalgia T70.29
Aeroembolism T70.3
Aerogenes capsulatus infection A48.0
Aero-otitis media T70.0
Aerophagy, aerophagia (psychogenic) F45.8
Aerophobia F40.228
Aerosinusitis T70.1
Aerottitis T70.0
Affection – *see* Disease
Afibrinogenemia (*see also* Defect, coagulation) D68.6
 acquired D65
 congenital D68.2
 in abortion – *see* Abortion, by type, complicated
 by, afibrinogenemia
 puerperal 072.3
African
 sleeping sickness B56.9
 tick fever A68.1
 trypanosomiasis B56.9
 gambian B56.0
 rhodesian B56.1
Aftercare (*see also* Care) Z51.89
 following surgery (for) (on)
 amputation Z47.81
 attention to
 drains Z48.03
 dressings (nonsurgical) Z48.00
 surgical Z48.01
 sutures Z48.02
 circulatory system Z48.812
 delayed (planned) wound closure Z48.1
 digestive system Z48.815
 genitourinary system Z48.816
 joint replacement Z47.1
 neoplasm Z48.3
 nervous system Z48.811
 oral cavity Z48.814
 organ transplant
 bone marrow Z48.290
 heart Z48.21
 heart-lung Z48.280
 kidney Z48.22
 liver Z48.23
 lung Z48.24
 multiple organs NEC Z48.288
 specified NEC Z48.298
 orthopedic NEC Z47.89
 planned wound closure Z48.1

Aftercare – *continued*
 following surgery (for) (on) – *continued*
 removal of internal fixation device Z47.2
 respiratory system Z48.813
 scoliosis Z47.82
 sense organs Z48.810
 skin and subcutaneous tissue Z48.817
 specified body system
 circulatory Z48.812
 digestive Z48.815
 genitourinary Z48.816
 nervous Z48.811
 oral cavity Z48.814
 respiratory Z48.813
 sense organs Z48.810
 skin and subcutaneous tissue Z48.817
 teeth Z48.814
 specified NEC Z48.89
 spinal – *see* Aftercare, following surgery (for) (on), specified body system
 teeth Z48.814
 fracture – code to fracture with extension
 involving
 removal of
 drains Z48.03
 dressings (nonsurgical) Z48.00
 staples Z48.02
 surgical dressings Z48.01
 sutures Z48.02
 neuropacemaker (brain) (peripheral nerve) (spinal cord) Z46.2
 implanted Z45.42
 orthopedic NEC Z47.89
 postprocedural – *see* Aftercare, following surgery
After-cataract – *see* Cataract, secondary
Agalactia (primary) O92.3
 elective, secondary or therapeutic O92.5
Agammaglobulinemia (acquired (secondary)) (nonfamilial) D80.1
 with
 immunoglobulin-bearing B-lymphocytes D80.1
 lymphopenia D81.9
 autosomal recessive (Swiss type) D80.0
 Bruton's X-linked D80.0
 common variable (CVAgamma) D80.1
 congenital sex-linked D80.0
 hereditary D80.0
 lymphopenic D81.9
 Swiss type (autosomal recessive) D80.0
 X-linked (with growth hormone deficiency) (Bruton) D80.0
Aganglionosis (bowel) (colon) Q43.1
Age (old) – *see* Senility
Agenesis
 adrenal (gland) Q89.1
 alimentary tract (complete) (partial) NEC Q45.8
 upper Q40.8
 anus, anal (canal) Q42.3
 with fistula Q42.2
 aorta Q25.4
 appendix Q42.8
 arm (complete) Q71.0
 with hand present Q71.1-
 artery (peripheral) Q27.9
 brain Q28.3
 coronary Q24.5
 pulmonary Q25.7
 specified NEC Q27.8
 umbilical Q27.0
 auditory (canal) (external) Q16.1
 auricle (ear) Q16.0
 bile duct or passage Q44.5
 bladder Q64.5
 bone Q79.9
 brain Q00.0
 part of Q04.3
 breast (with nipple present) Q83.8
 with absent nipple Q83.0
 bronchus Q32.4
 canaliculus lacrimalis Q10.4
 carpus – *see* Agenesis, hand
 cartilage Q79.9
 cecum Q42.8
 cerebellum Q04.3
 cervix Q51.5
 chin Q18.8
 cilia Q10.3
 circulatory system, part NOS Q28.9
 clavicle Q74.0
 clitoris Q52.6
 coccyx Q76.49
 colon Q42.9
 specified NEC Q42.8

Agenesis – Albuminous

Agenesis – *continued*

corpus callosum Q04.0
 cricoid cartilage Q31.8
 diaphragm (with hernia) Q79.1
 digestive organ(s) or tract (complete) (partial)
 NEC Q45.8
 upper Q40.8
 ductus arteriosus Q28.8
 duodenum Q41.0
 ear Q16.9
 auricle Q16.0
 lobe Q17.8
 ejaculatory duct Q55.4
 endocrine (gland) NEC Q89.2
 epiglottis Q31.8
 esophagus Q39.8
 eustachian tube Q16.2
 eye Q11.1
 adnexa Q15.8
 eyelid (fold) Q10.3
 face
 bones NEC Q75.8
 specified part NEC Q18.8
 fallopian tube Q50.6
 femur – *see* Defect, reduction, lower limb,
 longitudinal, femur
 fibula – *see* Defect, reduction, lower limb,
 longitudinal, fibula
 finger (complete) (partial) – *see* Agenesis, hand
 foot (and toes) (complete) (partial) Q72.3
 forearm (with hand present) – *see* Agenesis, arm,
 with hand present
 and hand Q71.2-
 gallbladder Q44.0
 gastric Q40.2
 genitalia, genital (organ(s))
 female Q52.8
 external Q52.71
 internal NEC Q52.8
 male Q55.8
 glottis Q31.8
 hair Q84.0
 hand (and fingers) (complete) (partial) Q71.3-
 heart Q24.8
 valve NEC Q24.8
 pulmonary Q22.0
 hepatic Q44.7
 humerus – *see* Defect, reduction, upper limb
 hymen Q52.4
 ileum Q41.2
 incus Q16.3
 intestine (small) Q41.9
 large Q42.9
 specified NEC Q42.8
 iris (dilator fibers) Q13.1
 jaw M26.09
 jejunum Q41.1
 kidney(s) (partial) Q60.2
 bilateral Q60.1
 unilateral Q60.0
 labium (majus) (minus) Q52.71
 labyrinth, membranous Q16.5
 lacrimal apparatus Q10.4
 larynx Q31.8
 leg (complete) Q72.0-
 with foot present Q72.1-
 lower leg (with foot present) – *see* Agenesis,
 leg, with foot present
 and foot Q72.2-
 lens Q12.3
 limb (complete) Q73.0
 lower – *see* Agenesis, leg
 upper – *see* Agenesis, arm
 lip Q38.0
 liver Q44.7
 lung (fissure) (lobe) (bilateral) (unilateral) Q33.3
 mandible, maxilla M26.09
 metacarpus – *see* Agenesis, hand
 metatarsus – *see* Agenesis, foot
 muscle Q79.8
 eyelid Q10.3
 ocular Q15.8
 musculoskeletal system NEC Q79.8
 nail(s) Q84.3
 neck, part Q18.8
 nerve Q07.8
 nervous system, part NEC Q07.8
 nipple Q83.2
 nose Q30.1
 nuclear Q07.8
 oesophagus Q39.8
 organ
 of Corti Q16.5
 or site not listed – *see* Anomaly, by site

Agenesis – *continued*

osseous meatus (ear) Q16.1
 ovary
 bilateral Q50.02
 unilateral Q50.01
 oviduct Q50.6
 pancreas Q45.0
 parathyroid (gland) Q89.2
 parotid gland(s) Q38.4
 patella Q74.1
 pelvic girdle (complete) (partial) Q74.2
 penis Q55.5
 pericardium Q24.8
 pituitary (gland) Q89.2
 prostate Q55.4
 punctum lacrimale Q10.4
 radioulnar – *see* Defect, reduction, upper limb
 radius – *see* Defect, reduction, upper limb,
 longitudinal, radius
 rectum Q42.1
 with fistula Q42.0
 renal Q60.2
 bilateral Q60.1
 unilateral Q60.0
 respiratory organ NEC Q34.8
 rib Q76.6
 roof of orbit Q75.8
 round ligament Q52.8
 sacrum Q76.49
 salivary gland Q38.4
 scapula Q74.0
 scrotum Q55.29
 seminal vesicles Q55.4
 septum
 atrial Q21.1
 between aorta and pulmonary artery Q21.4
 ventricular Q20.4
 shoulder girdle (complete) (partial) Q74.0
 skull (bone) Q75.8
 with
 anencephaly Q00.0
 encephalocele – *see* Encephalocele
 hydrocephalus Q03.9
 with spina bifida – *see* Spina bifida, by
 site, with hydrocephalus
 microcephaly Q02
 spermatocord Q55.4
 spinal cord Q06.0
 spine Q76.49
 spleen Q89.01
 sternum Q76.7
 stomach Q40.2
 submaxillary gland(s) (congenital) Q38.4
 tarsus – *see* Agenesis, foot
 tendon Q79.8
 testicle Q55.0
 thymus (gland) Q89.2
 thyroid (gland) E03.1
 cartilage Q31.8
 tibia – *see* Defect, reduction, lower limb,
 longitudinal, tibia
 tibiofibular – *see* Defect, reduction, lower limb,
 specified type NEC
 toe (and foot) (complete) (partial) – *see*
 Agenesis, foot
 tongue Q38.3
 trachea (cartilage) Q32.1
 ulna – *see* Defect, reduction, upper limb,
 longitudinal, ulna
 upper limb – *see* Agenesis, arm
 ureter Q62.4
 urethra Q64.5
 urinary tract NEC Q64.8
 uterus Q51.0
 uvula Q38.5
 vagina Q52.0
 vas deferens Q55.4
 vein(s) (peripheral) Q27.9
 brain Q28.3
 great NEC Q26.8
 portal Q26.5
 vena cava (inferior) (superior) Q26.8
 vermis of cerebellum Q04.3
 vertebra Q76.49
 vulva Q52.71
Ageusia R43.2
Agitated – *see* condition
Agitation R45.1
Aglossia (congenital) Q38.3
Aglossia-adactylia syndrome Q87.0
Aglycogenesis E74.00

Agnosia (body image) (other senses) (tactile)

(visual) R48.1
 developmental F88
 verbal R48.1
 auditory R48.1
 developmental F80.2
 developmental F80.2
 visual object H53.16
Agoraphobia F40.00
 with panic disorder F40.01
 without panic disorder F40.02
Agrammatism R48.8
Agranulocytopenia – *see* Agranulocytosis
Agranulocytosis (chronic) (cyclical) (genetic)
 (infantile) (periodic) (pernicious) D70.9 – *see*
also Neutropenia
 congenital D70.0
 cytoreductive cancer chemotherapy sequela D70.1
 drug-induced D70.2
 due to cytoreductive cancer chemotherapy D70.1
 due to infection D70.3
 secondary D70.8
 drug-induced D70.2
 due to cytoreductive cancer chemotherapy
 D70.1
Aggraphia (absolute) R48.8
 with alexia R48.0
 developmental F81.81
Ague (dumb) – *see* Malaria
Agyria Q04.3
Ahumada-del Castillo syndrome E23.0
Aichomophobia F40.298
AIDS (related complex) B20
Ailment heart – *see* Disease, heart
Ailurophobia F40.218
Ainhum (disease) L94.6
AIPHI R04.81
Air
 anterior mediastinum J98.2
 compressed, disease T70.3
 conditioner lung or pneumonitis J67.7
 embolism (artery) (cerebral) (any site) T79.0
 with ectopic or molar pregnancy O08.2
 due to implanted device NEC – *see*
 Complications, by site and type,
 specified NEC
 following
 ectopic or molar pregnancy O08.2
 infusion, therapeutic injection or transfusion
 T80.0
 in pregnancy, childbirth or puerperium – *see*
 Embolism, obstetric
 traumatic T79.0
 hunger, psychogenic F45.8
 rarefied, effects of – *see* Effect, adverse, high
 altitude
 sickness T75.3
Airplane sickness T75.3
Akathisia (drug-induced) (treatment-induced) G25.71
 neuroleptic induced (acute) G25.71
Akinesia R29.898
Akinetic mutism R41.89
Akureyri's disease G93.3
Alactasia, congenital E73.0
Alagille's syndrome Q44.7
Alastrim B03
Albers-Schönberg syndrome Q78.2
Albert's syndrome – *see* Tendinitis, Achilles
Albinism, albino E70.30
 with hematologic abnormality E70.339
 Chédiak-Higashi syndrome E70.330
 Hermansky-Pudlak syndrome E70.331
 other specified E70.338
 I E70.320
 II E70.321
 ocular E70.319
 autosomal recessive E70.311
 other specified E70.318
 X-linked E70.310
 oculocutaneous E70.329
 other specified E70.328
 tyrosinase (ty) negative E70.320
 tyrosinase (ty) positive E70.321
 other specified E70.329
Albinism E70.30
Albright(-McCune)(-Sternberg) syndrome Q78.1
Albuminous – *see* condition

Constriction – *continued*

external – *continued*
 head S00.94
 ear – see Constriction, external, ear
 eyelid – see Constriction, external, eyelid
 lip S00.541
 nose S00.34
 oral cavity S00.542
 scalp S00.04
 specified site NEC S00.84
 heel – see Constriction, external, foot
 hip S70.24
 inguinal region S30.841
 interscapular region S20.449
 jaw S00.84
 knee S80.24
 labium (majus) (minus) S30.844
 larynx S10.14
 leg (lower) S80.84-
 knee – see Constriction, external, knee
 upper – see Constriction, external, thigh
 lip S00.541
 lower back S30.840
 lumbar region S30.840
 malar region S00.84
 mammary – see Constriction, external, breast
 mastoid region S00.84
 mouth S00.542
 nail
 finger – see Constriction, external, finger
 toe – see Constriction, external, toe
 nasal S00.34
 neck S10.94
 specified site NEC S10.84
 throat S10.14
 nose S00.34
 occipital region S00.04
 oral cavity S00.542
 orbital region – see Constriction, external, eyelid
 palate S00.542
 palm – see Constriction, external, hand
 parietal region S00.04
 pelvis S30.840
 penis S30.842
 perineum
 female S30.844
 male S30.840
 periocular area – see Constriction, external,
 eyelid
 phalanges
 finger – see Constriction, external, finger
 toe – see Constriction, external, toe
 pharynx S10.14
 pinna – see Constriction, external, ear
 popliteal space – see Constriction, external,
 knee
 prepuce S30.842
 pubic region S30.840
 pudendum
 female S30.846
 male S30.845
 sacral region S30.840
 scalp S00.04
 scapular region – see Constriction, external,
 shoulder
 scrotum S30.843
 shin – see Constriction, external, leg
 shoulder S40.24-
 sternal region S20.349
 submaxillary region S00.84
 submental region S00.84
 subungual
 finger(s) – see Constriction, external, finger
 toe(s) – see Constriction, external, toe
 supraclavicular fossa S10.84
 supraorbital S00.84
 temple S00.84
 temporal region S00.84
 testis S30.843
 thigh S70.34-
 thorax, thoracic (wall) S20.94
 back S20.44-
 front S20.34-
 throat S10.14
 thumb S60.34-
 toe(s) (lesser) S90.44-
 great S90.44-
 tongue S00.542
 trachea S10.14
 tunica vaginalis S30.843
 uvula S00.542
 vagina S30.844
 vulva S30.844
 wrist S60.84-

Constriction – *continued*

gallbladder – see Obstruction, gallbladder
 intestine – see Obstruction, intestine
 larynx J38.6
 congenital Q31.8
 specified NEC Q31.8
 subglottic Q31.1
 organ or site, congenital NEC – see Atresia, by
 site
 prepuce (acquired) (congenital) N47.1
 pylorus (adult hypertrophic) K31.1
 congenital or infantile Q40.0
 newborn Q40.0
 ring dystocia (uterus) O62.4
 spastic – see also Spasm
 ureter N13.5
 ureter N13.5
 with infection N13.6
 urethra – see Stricture, urethra
 visual field (peripheral) (functional) – see Defect,
 visual field
Constrictive – see condition
Consultation
 medical – see Counseling, medical
 religious Z71.81
 specified reason NEC Z71.89
 spiritual Z71.81
 without complaint or sickness Z71.9
 feared complaint unfounded Z71.1
 specified reason NEC Z71.89
Consumption – see Tuberculosis
Contact (with) (see also Exposure (to))
 acariasis Z20.7
 AIDS virus Z20.6
 air pollution Z77.110
 algae and algae toxins Z77.121
 algae bloom Z77.121
 anthrax Z20.810
 aromatic amines Z77.020
 aromatic (hazardous) compounds NEC Z77.028
 aromatic dyes NOS Z77.028
 arsenic Z77.010
 asbestos Z77.090
 bacterial disease NEC Z20.818
 benzene Z77.021
 blue-green algae bloom Z77.121
 body fluids (potentially hazardous) Z77.21
 brown tide Z77.121
 chemicals (chiefly nonmedicinal) (hazardous)
 NEC Z77.098
 chromium compounds Z77.018
 cholera Z20.09
 communicable disease Z20.9
 bacterial NEC Z20.818
 specified NEC Z20.89
 viral NEC Z20.828
 cyanobacteria bloom Z77.121
 dyes Z77.098
 Escherichia coli (E. coli) Z20.01
 fiberglass – see Table of drugs and chemicals,
 fiberglass
 German measles Z20.4
 gonorrhea Z20.2
 hazardous metals NEC Z77.018
 hazardous substances NEC Z77.29
 hazards in the physical environment NEC
 Z77.128
 hazards to health NEC Z77.9
 HIV Z20.6
 HTLV-III/LAV Z20.6
 human immunodeficiency virus (HIV) Z20.6
 infection Z20.9
 specified NEC Z20.89
 infestation (parasitic) NEC Z20.7
 intestinal infectious disease NEC Z20.09
 Escherichia coli (E. coli) Z20.01
 lead Z77.011
 meningococcus Z20.811
 mold (toxic) Z77.120
 nickel dust Z77.018
 noise Z77.122
 parasitic disease Z20.7
 pediculosis Z20.7
 pfiesteria piscicida Z77.121
 poliomyelitis Z20.89
 pollution
 air Z77.110
 environmental NEC Z77.118
 soil Z77.112
 water Z77.111
 polycyclic aromatic hydrocarbons Z77.028
 rabies Z20.3
 radiation, naturally occurring NEC Z77.123

Contact – *continued*

radon Z77.123
 red tide (Florida) Z77.121
 rubella Z20.4
 sexually-transmitted disease Z20.2
 smallpox (laboratory) Z20.89
 syphilis Z20.2
 tuberculosis Z20.1
 varicella Z20.820
 venereal disease Z20.2
 viral disease NEC Z20.828
 viral hepatitis Z20.5
 water pollution Z77.111
Contamination, food – see Intoxication, foodborne
Contraception, contraceptive
 advice Z30.09
 counseling Z30.09
 device (intrauterine) (in situ) Z97.5
 causing menorrhagia T83.83
 checking Z30.431
 complications – see Complications,
 intrauterine, contraceptive device
 in place Z97.5
 initial prescription Z30.014
 reinsertion Z30.433
 removal Z30.432
 replacement Z30.433
 emergency (postcoital) Z30.012
 initial prescription Z30.019
 injectable Z30.013
 intrauterine device Z30.014
 pills Z30.011
 postcoital (emergency) Z30.012
 specified type NEC Z30.018
 subdermal implantable Z30.019
 maintenance Z30.40
 examination Z30.8
 injectable Z30.42
 intrauterine device Z30.431
 pills Z30.41
 specified type NEC Z30.49
 subdermal implantable Z30.49
 management Z30.9
 specified NEC Z30.8
 postcoital (emergency) Z30.012
 prescription Z30.019
 repeat Z30.40
 sterilization Z30.2
 surveillance (drug) – see Contraception,
 maintenance
Contraction(s), contracture, contracted
 Achilles tendon – see also Short, tendon, Achilles
 congenital Q66.8
 amputation stump (surgical) (flexion) (late)
 T87.8
 anus K59.8
 bile duct (common) (hepatic) K83.8
 bladder N32.89
 neck or sphincter N32.0
 bowel, cecum, colon or intestine, any part – see
 Obstruction, intestine
 Braxton Hicks – see False, labor
 breast implant, capsular T85.44
 bronchial J98.09
 burn (old) – see Cicatrix
 cervix – see Stricture, cervix
 cicatricial – see Cicatrix
 conjunctiva, trachomatous, active A71.1
 sequelae (late effect) B94.0
 Dupuytren's M72.0
 eyelid – see Disorder, eyelid function
 fascia (lata) (postural) M72.8
 Dupuytren's M72.0
 palmar M72.0
 plantar M72.2
 finger NEC – see also Deformity, finger
 congenital Q68.1
 joint – see Contraction, joint, hand
 flaccid – see Contraction, paralytic
 gallbladder K82.0
 heart valve – see Endocarditis
 hip – see Contraction, joint, hip
 hourglass
 bladder N32.89
 congenital Q64.79
 gallbladder K82.0
 congenital Q44.1
 stomach K31.89
 congenital Q40.2
 psychogenic F45.8
 uterus (complicating delivery) O62.4
 hysterical F44.4
 internal os – see Stricture, cervix

Contraction(s), contracture, contracted – *continued*
 joint (abduction) (acquired) (adduction) (flexion) (rotation) M24.50
 ankle M24.57-
 congenital NEC Q68.8
 hip Q65.8
 elbow M24.52-
 foot joint M24.57-
 hand joint M24.54-
 hip M24.55-
 congenital Q65.8
 hysterical F44.4
 knee M24.56-
 shoulder M24.51-
 wrist M24.53-
 kidney (granular) (secondary) N26.9
 congenital Q63.8
 hydronephritic – *see* Hydronephrosis
 Page N26.2
 pyelonephritic – *see* Pyelitis, chronic
 tuberculous A18.11
 ligament – *see also* Disorder, ligament
 congenital Q79.8
 muscle (postinfective) (postural) NEC M62.40
 with contracture of joint – *see* Contraction, joint
 ankle M62.47-
 congenital Q79.8
 sternocleidomastoid Q68.0
 extraocular – *see* Strabismus
 eye (extrinsic) – *see* Strabismus
 foot M62.47-
 forearm M62.43-
 hand M62.44-
 hysterical F44.4
 ischemic (Volkman's) T79.6
 lower leg M62.46-
 multiple sites M62.49
 pelvic region M62.45-
 posttraumatic – *see* Strabismus, paralytic
 psychogenic F45.8
 conversion reaction F44.4
 shoulder region M62.41-
 specified site NEC M62.48
 thigh M62.45-
 upper arm M62.42-
 neck – *see* Torticollis
 ocular muscle – *see* Strabismus
 organ or site, congenital NEC – *see* Atresia, by site
 outlet (pelvis) – *see* Contraction, pelvis
 palmar fascia M72.0
 paralytic
 joint – *see* Contraction, joint
 muscle – *see also* Contraction, muscle NEC
 ocular – *see* Strabismus, paralytic
 pelvis (acquired) (general) M95.5
 with disproportion (fetopelvic) O33.1
 causing obstructed labor O65.1
 inlet O33.2
 mid-cavity O33.3
 outlet O33.3
 plantar fascia M72.2
 premature
 atrium I49.1
 auriculoventricular I49.49
 heart I49.49
 junctional I49.2
 supraventricular I49.1
 ventricular I49.3
 prostate N42.89
 pylorus NEC – *see also* Pylorospasm
 psychogenic F45.8
 rectum, rectal (sphincter) K59.8
 ring (Bandl's) (complicating delivery) O62.4
 scar – *see* Cicatrix
 spine – *see* Dorsopathy, deforming
 sternocleidomastoid (muscle), congenital Q68.0
 stomach K31.89
 hourglass K31.89
 congenital Q40.2
 psychogenic F45.8
 psychogenic F45.8
 tendon (sheath) M62.40
 with contracture of joint – *see* Contraction, joint
 Achilles – *see* Short, tendon, Achilles
 ankle M62.47-
 Achilles – *see* Short, tendon, Achilles
 foot M62.47-
 forearm M62.43-
 hand M62.44-
 lower leg M62.46-
 multiple sites M62.49

Contraction(s), contracture, contracted – *continued*
 tendon – *continued*
 neck M62.48
 pelvic region M62.45-
 shoulder region M62.41-
 specified site NEC M62.48
 thigh M62.45-
 thorax M62.48
 trunk M62.48
 upper arm M62.42-
 toe – *see* Deformity, toe, specified NEC
 ureterovesical orifice (postinfectious) N13.5
 with infection N13.6
 urethra – *see also* Stricture, urethra
 orifice N32.0
 uterus N85.8
 abnormal NEC O62.9
 clonic (complicating delivery) O62.4
 dyscoordinate (complicating delivery) O62.4
 hourglass (complicating delivery) O62.4
 hypertonic O62.4
 hypotonic NEC O62.2
 inadequate
 primary O62.0
 secondary O62.1
 incoordinate (complicating delivery) O62.4
 poor O62.2
 tetanic (complicating delivery) O62.4
 vagina (outlet) N89.5
 vesical N32.89
 neck or urethral orifice N32.0
 visual field – *see* Defect, visual field, generalized
 Volkmann's (ischemic) T79.6
Contusion (skin surface intact)
 abdomen, abdominal (muscle) (wall) S30.1
 adnexa, eye NEC S05.8x-
 adrenal gland S37.812
 alveolar process S00.532
 ankle S90.0-
 antecubital space
 anus S30.3
 arm (upper) S40.02-
 lower (with elbow) – *see* Contusion, forearm
 auditory canal – *see* Contusion, ear
 auricle – *see* Contusion, ear
 axilla – *see* Contusion, arm, upper
 back – *see also* Contusion, thorax, back
 lower S30.0
 bile duct S36.13
 bladder S37.22
 bone NEC T14.8
 brain (diffuse) – *see* Injury, intracranial, diffuse
 focal – *see* Injury, intracranial, focal
 brainstem S06.38-
 breast S20.0
 broad ligament S37.892
 brow S00.83
 buttock S30.0
 canthus, eye S00.1-
 cauda equina S34.3
 cerebellar, traumatic S06.37-
 cerebral S06.33-
 left side S06.32-
 right side S06.31-
 cheek S00.83
 internal S00.532
 chest (wall) – *see* Contusion, thorax
 chin S00.83
 clitoris S30.23
 colon – *see* Injury, intestine, large, contusion
 common bile duct S36.13
 conjunctiva S05.1-
 with foreign body (in conjunctival sac) – *see* Foreign body, conjunctival sac
 conus medullaris (spine) S34.139
 cornea – *see* Contusion, eyeball
 with foreign body – *see* Foreign body, cornea
 corpus cavernosum S30.21
 cortex (brain) (cerebral) – *see* Injury, intracranial, diffuse
 focal – *see* Injury, intracranial, focal
 costal region – *see* Contusion, thorax
 cystic duct S36.13
 diaphragm S27.802
 duodenum S36.420
 ear S00.43-
 elbow S50.0-
 with forearm – *see* Contusion, forearm
 epididymis S30.22
 epigastric region S30.1
 epiglottis S10.0
 esophagus (thoracic) S27.812
 cervical S10.0
 eyeball S05.1-

Contusion – *continued*
 eyebrow S00.1-
 eyelid (and periorcular area) S00.1-
 face NEC S00.83
 fallopian tube S37.529
 bilateral S37.522
 unilateral S37.521
 femoral triangle S30.1
 finger(s) S60.00
 with damage to nail (matrix) S60.10
 index S60.02-
 with damage to nail S60.12-
 little S60.05-
 with damage to nail S60.15-
 middle S60.03-
 with damage to nail S60.13-
 ring S60.04-
 with damage to nail S60.14-
 thumb – *see* Contusion, thumb
 flank S30.1
 foot (except toe(s) alone) S90.3-
 toe – *see* Contusion, toe
 forearm S50.1-
 elbow only – *see* Contusion, elbow
 forehead S00.83
 gallbladder S36.122
 genital organs, external
 female S30.202
 male S30.201
 globe (eye) – *see* Contusion, eyeball
 groin S30.1
 gum S00.532
 hand S60.22-
 finger(s) – *see* Contusion, finger
 wrist – *see* Contusion, wrist
 head S00.93
 ear – *see* Contusion, ear
 eyelid – *see* Contusion, eyelid
 lip S00.531
 nose S00.33
 oral cavity S00.532
 scalp S00.03
 specified part NEC S00.83
 heel – *see* Contusion, foot
 hepatic duct S36.13
 hip S70.0-
 ileum S36.428
 iliac region S30.1
 inguinal region S30.1
 interscapular region S20.229
 intra-abdominal organ S36.92
 colon – *see* Injury, intestine, large, contusion
 liver S36.112
 pancreas – *see* Contusion, pancreas
 rectum S36.62
 small intestine – *see* Injury, intestine, small, contusion
 specified organ NEC S36.892
 spleen – *see* Contusion, spleen
 stomach S36.32
 iris (eye) – *see* Contusion, eyeball
 jaw S00.83
 jejunum S36.428
 kidney S37.01-
 major (greater than 2 cm) S37.02-
 minor (less than 2 cm) S37.01-
 knee S80.0-
 labium (majus) (minus) S30.23
 lacrimal apparatus, gland or sac S05.8x-
 larynx S10.0
 leg (lower) S80.1-
 knee – *see* Contusion, knee
 lens – *see* Contusion, eyeball
 lip S00.531
 liver S36.112
 lower back S30.0
 lumbar region S30.0
 lung S27.329
 bilateral S27.322
 unilateral S27.321
 malar region S00.83
 mastoid region S00.83
 membrane, brain – *see* Injury, intracranial, diffuse
 focal – *see* Injury, intracranial, focal
 mesentery S36.892
 mesosalpinx S37.529
 bilateral S37.522
 unilateral S37.521
 mouth S00.532
 muscle – *see* Contusion, by site
 nail
 finger – *see* Contusion, finger, with damage to nail
 toe – *see* Contusion, toe, with damage to nail

C90 Multiple myeloma and malignant plasma cell neoplasms

Excludes1 personal history of other malignant neoplasms of lymphoid, hematopoietic and related tissues (Z85.79)

C90.0 Multiple myeloma

- Kahler's disease
- Medullary plasmacytoma
- Myelomatosis
- Plasma cell myeloma

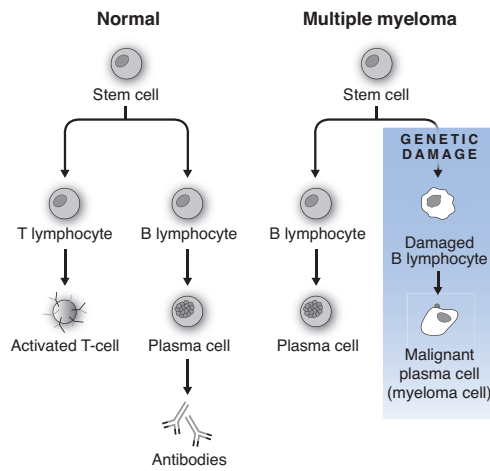
Excludes1 solitary myeloma (C90.3-) solitary plasmacytoma (C90.3-)

C90.00 Multiple myeloma not having achieved remission

- Multiple myeloma with failed remission
- Multiple myeloma NOS

Multiple myeloma

A type of cancer characterized by excessive numbers of malignant plasma cells in the bone marrow



C90.01 Multiple myeloma in remission

C90.02 Multiple myeloma in relapse

C90.1 Plasma cell leukemia

Plasmacytic leukemia

C90.10 Plasma cell leukemia not having achieved remission

- Plasma cell leukemia with failed remission
- Plasma cell leukemia NOS

C90.11 Plasma cell leukemia in remission

C90.12 Plasma cell leukemia in relapse

C90.2 Extramedullary plasmacytoma

C90.20 Extramedullary plasmacytoma not having achieved remission

- Extramedullary plasmacytoma with failed remission
- Plasmacytoma, extramedullary NOS

C90.21 Extramedullary plasmacytoma in remission

C90.22 Extramedullary plasmacytoma in relapse

C90.3 Solitary plasmacytoma

- Localized malignant plasma cell tumor NOS
- Plasmacytoma NOS
- Solitary myeloma

C90.30 Solitary plasmacytoma not having achieved remission

- Solitary plasmacytoma with failed remission
- Solitary plasmacytoma NOS

C90.31 Solitary plasmacytoma in remission

C90.32 Solitary plasmacytoma in relapse

C91 Lymphoid leukemia

Excludes1 personal history of leukemia (Z85.6)

C91.0 Acute lymphoblastic leukemia [ALL]

Note: Code C91.0 should only be used for T-cell and B-cell precursor leukemia

C91.00 Acute lymphoblastic leukemia not having achieved remission

- Acute lymphoblastic leukemia with failed remission
- Acute lymphoblastic leukemia NOS

C91.01 Acute lymphoblastic leukemia, in remission

C91.02 Acute lymphoblastic leukemia, in relapse

C91.1 Chronic lymphocytic leukemia of B-cell type

- Lymphoplasmacytic leukemia
- Richter syndrome

Excludes1 lymphoplasmacytic lymphoma (C83.0-)

C91.10 Chronic lymphocytic leukemia of B-cell type not having achieved remission

- Chronic lymphocytic leukemia of B-cell type with failed remission
- Chronic lymphocytic leukemia of B-cell type NOS

C91.11 Chronic lymphocytic leukemia of B-cell type in remission

C91.12 Chronic lymphocytic leukemia of B-cell type in relapse

C91.3 Polymorphocytic leukemia of B-cell type

C91.30 Polymorphocytic leukemia of B-cell type not having achieved remission

- Polymorphocytic leukemia of B-cell type NOS
- Polymorphocytic leukemia of B-cell type with failed remission

C91.31 Polymorphocytic leukemia of B-cell type, in remission

C91.32 Polymorphocytic leukemia of B-cell type, in relapse

C91.4 Hairy cell leukemia

Leukemic reticuloendotheliosis

C91.40 Hairy cell leukemia not having achieved remission

- Hairy cell leukemia with failed remission
- Hairy cell leukemia NOS

C91.41 Hairy-cell leukemia, in remission

C91.42 Hairy cell leukemia, in relapse

C91.5 Adult T-cell lymphoma/leukemia (HTLV-1 associated)

Acute variant of adult T-cell lymphoma/leukemia (HTLV-1-associated)

Chronic variant of adult T-cell lymphoma/leukemia (HTLV-1-associated)

Lymphomatoid variant of adult T-cell lymphoma/leukemia (HTLV-1-associated)

Smouldering variant of adult T-cell lymphoma/leukemia (HTLV-1-associated)

C91.50 Adult T-cell lymphoma/leukemia (HTLV-1-associated) not having achieved remission

Adult T-cell lymphoma/leukemia (HTLV-1-associated) with failed remission

Adult T-cell lymphoma/leukemia (HTLV-1-associated) NOS

C91.51 Adult T-cell lymphoma/leukemia (HTLV-1-associated), in remission

C91.52 Adult T-cell lymphoma/leukemia (HTLV-1-associated), in relapse

C91.6 Polymorphocytic leukemia of T-cell type

C91.60 Polymorphocytic leukemia of T-cell type not having achieved remission

- Polymorphocytic leukemia of T-cell type with failed remission
- Polymorphocytic leukemia of T-cell type NOS

C91.61 Polymorphocytic leukemia of T-cell type, in remission

C91.62 Polymorphocytic leukemia of T-cell type, in relapse

C91.9 Lymphoid leukemia, unspecified

C91.90 Lymphoid leukemia, unspecified not having achieved remission

- Lymphoid leukemia with failed remission
- Lymphoid leukemia NOS

C91.91 Lymphoid leukemia, unspecified, in remission

C91.92 Lymphoid leukemia, unspecified, in relapse

C91.A Mature B-cell leukemia Burkitt-type

Excludes1 Burkitt lymphoma (C83.7-)

C91.A0 Mature B-cell leukemia Burkitt-type not having achieved remission

- Mature B-cell leukemia Burkitt-type with failed remission
- Mature B-cell leukemia Burkitt-type NOS

C91.A1 Mature B-cell leukemia Burkitt-type, in remission

C91.A2 Mature B-cell leukemia Burkitt-type, in relapse

F54 Psychological and behavioral factors associated with disorders or diseases classified elsewhere

Psychological factors affecting physical conditions
 Code first the associated physical disorder, such as:
 asthma (J45.-)
 dermatitis (L23-L25)
 gastric ulcer (K25.-)
 mucous colitis (K58.-)
 ulcerative colitis (K54.-)
 urticaria (L50.-)

Excludes2 tension-type headache (G44.2)

F55 Abuse of non-psychoactive substances

Excludes2 abuse of psychoactive substances (F10-F19)

F55.0 Abuse of antacids**F55.1 Abuse of herbal or folk remedies****F55.2 Abuse of laxatives****F55.3 Abuse of steroids or hormones****F55.4 Abuse of vitamins****F55.8 Abuse of other non-psychoactive substances****F59 Unspecified behavioral syndromes associated with physiological disturbances and physical factors**

Psychogenic physiological dysfunction NOS

DISORDERS OF ADULT PERSONALITY AND BEHAVIOR (F60-F69)**F60 Specific personality disorders****F60.0 Paranoid personality disorder**

Expansive paranoid personality (disorder)
 Fanatic personality (disorder)
 Querulant personality (disorder)
 Paranoid personality (disorder)
 Sensitive paranoid personality (disorder)

Excludes2 paranoia (F22)
 paranoia querulans (F22)
 paranoid psychosis (F22)
 paranoid schizophrenia (F20.0)
 paranoid state (F22)

F60.1 Schizoid personality disorder

Excludes2 Asperger's syndrome (F84.5)
 delusional disorder (F22)
 schizoid disorder of childhood (F84.5)
 schizophrenia (F20.-)
 schizotypal disorder (F21)

F60.2 Antisocial personality disorder

Amoral personality (disorder)
 Asocial personality (disorder)
 Dissocial personality disorder
 Psychopathic personality (disorder)
 Sociopathic personality (disorder)

Excludes1 conduct disorders (F91.-)

Excludes2 borderline personality disorder (F60.3)

F60.3 Borderline personality disorder

Aggressive personality (disorder)
 Emotionally unstable personality disorder
 Explosive personality (disorder)

Excludes2 antisocial personality disorder (F60.2)

DEF Disorder in which a person is quick to anger, aggressive abnormally emotional, and argumentative.

F60.4 Histrionic personality disorder

Hysterical personality (disorder)
 Psychoinfantile personality (disorder)

F60.5 Obsessive-compulsive personality disorder

Anankastic personality (disorder)
 Compulsive personality (disorder)
 Obsessional personality (disorder)

Excludes2 obsessive-compulsive disorder (F42)

F60.6 Avoidant personality disorder

Anxious personality disorder

F60.7 Dependent personality disorder

Asthenic personality (disorder)
 Inadequate personality (disorder)
 Passive personality (disorder)

F60.8 Other specific personality disorders

DEF Conversion of anxiety into physical symptoms.

F60.81 Narcissistic personality disorder**F60.89 Other specific personality disorders**

Eccentric personality disorder
 'Haltlose' type personality disorder
 Immature personality disorder
 Passive-aggressive personality disorder
 Psychoneurotic personality disorder
 Self-defeating personality disorder

F60.9 Personality disorder, unspecified

Character disorder NOS
 Character neurosis NOS
 Pathological personality NOS

F63 Impulse disorders

Excludes2 habitual excessive use of alcohol or psychoactive substances (F10-F19)
 impulse disorders involving sexual behavior (F65.-)

F63.0 Pathological gambling

Compulsive gambling

Excludes1 gambling and betting NOS (Z72.6)

Excludes2 excessive gambling by manic patients (F30, F31)
 gambling in antisocial personality disorder (F60.2)

F63.1 Pyromania

Pathological fire-setting

Excludes2 fire-setting (by) (in):

adult with antisocial personality disorder (F60.2)
 alcohol or psychoactive substance intoxication (F10-F19)

conduct disorders (F91.-)

mental disorders due to known physiological condition (F01-F09)

schizophrenia (F20.-)

DEF Uncontrollable impulse to set fires.

F63.2 Kleptomania

Pathological stealing

Excludes1 shoplifting as the reason for observation for suspected mental disorder (Z03.8)

Excludes2 depressive disorder with stealing (F31-F33)
 stealing due to underlying mental condition-code to mental condition

stealing in mental disorders due to known physiological condition (F01-F09)

DEF Irresistible impulse to steal.

F63.3 Trichotillomania

Hair plucking

Excludes2 other stereotyped movement disorder (F98.4)

F63.8 Other impulse disorders**F63.81 Intermittent explosive disorder****F63.89 Other impulse disorders****F63.9 Impulse disorder, unspecified**

Impulse control disorder NOS

F64 Gender identity disorders**F64.1 Gender identity disorder in adolescence and adulthood**

Dual role transvestism
 Transsexualism

Use additional code to identify sex reassignment status (Z87.890)

Excludes1 gender identity disorder in childhood (F64.2)

Excludes2 fetishistic transvestism (F65.1)

F64.2 Gender identity disorder of childhood

Excludes1 gender identity disorder in adolescence and adulthood (F64.1)

Excludes2 sexual maturation disorder (F66)

F64.8 Other gender identity disorders**F64.9 Gender identity disorder, unspecified**

Gender-role disorder NOS

F65 Paraphilias**F65.0 Fetishism****F65.1 Transvestic fetishism**

Fetishistic transvestism

F65.2 Exhibitionism

DEF Compulsion to expose genitals in public.

F65.3 Voyeurism

DEF Uncontrollable compulsion to covertly observe others who are nude or engaged in sexual activity.

F65.4 Pedophilia**F65.5 Sadomasochism****F65.50 Sadomasochism, unspecified**

M93.939	Osteochondropathy, unspecified, unspecified forearm
M93.94	Osteochondropathy, unspecified of hand
M93.941	Osteochondropathy, unspecified, right hand
M93.942	Osteochondropathy, unspecified, left hand
M93.949	Osteochondropathy, unspecified, unspecified hand
M93.95	Osteochondropathy, unspecified of thigh
M93.951	Osteochondropathy, unspecified, right thigh
M93.952	Osteochondropathy, unspecified, left thigh
M93.959	Osteochondropathy, unspecified, unspecified thigh
M93.96	Osteochondropathy, unspecified lower leg
M93.961	Osteochondropathy, unspecified, right lower leg
M93.962	Osteochondropathy, unspecified, left lower leg
M93.969	Osteochondropathy, unspecified, unspecified lower leg
M93.97	Osteochondropathy, unspecified of ankle and foot
M93.971	Osteochondropathy, unspecified, right ankle and foot
M93.972	Osteochondropathy, unspecified, left ankle and foot
M93.979	Osteochondropathy, unspecified, unspecified ankle and foot
M93.98	Osteochondropathy, unspecified other
M93.99	Osteochondropathy, unspecified multiple sites
M94	Other disorders of cartilage
M94.0	Chondrocostal junction syndrome [Tietze] Costochondritis
M94.1	Relapsing polychondritis
M94.2	Chondromalacia <i>Excludes1</i> chondromalacia patellae (M22.4) DE Joint cartilage softens and degenerates, causing tenderness, pain, and a grinding sensation.
M94.20	Chondromalacia, unspecified site
M94.21	Chondromalacia, shoulder
M94.211	Chondromalacia, right shoulder
M94.212	Chondromalacia, left shoulder
M94.219	Chondromalacia, unspecified shoulder
M94.22	Chondromalacia, elbow
M94.221	Chondromalacia, right elbow
M94.222	Chondromalacia, left elbow
M94.229	Chondromalacia, unspecified elbow
M94.23	Chondromalacia, wrist
M94.231	Chondromalacia, right wrist
M94.232	Chondromalacia, left wrist
M94.239	Chondromalacia, unspecified wrist
M94.24	Chondromalacia, joints of hand
M94.241	Chondromalacia, joints of right hand
M94.242	Chondromalacia, joints of left hand
M94.249	Chondromalacia, joints of unspecified hand
M94.25	Chondromalacia, hip
M94.251	Chondromalacia, right hip
M94.252	Chondromalacia, left hip
M94.259	Chondromalacia, unspecified hip
M94.26	Chondromalacia, knee
M94.261	Chondromalacia, right knee
M94.262	Chondromalacia, left knee
M94.269	Chondromalacia, unspecified knee
M94.27	Chondromalacia, ankle and joints of foot
M94.271	Chondromalacia, right ankle and joints of right foot
M94.272	Chondromalacia, left ankle and joints of left foot
M94.279	Chondromalacia, unspecified ankle and joints of foot
M94.28	Chondromalacia, other site
M94.29	Chondromalacia, multiple sites

M94.3	Chondrolysis <i>Code first any associated slipped upper femoral epiphysis (nontraumatic) (M93.0-)</i>
M94.35	Chondrolysis, hip
M94.351	Chondrolysis, right hip
M94.352	Chondrolysis, left hip
M94.359	Chondrolysis, unspecified hip
M94.8	Other specified disorders of cartilage
M94.8x	Other specified disorders of cartilage
M94.8x0	Other specified disorders of cartilage, multiple sites
M94.8x1	Other specified disorders of cartilage, shoulder
M94.8x2	Other specified disorders of cartilage, upper arm
M94.8x3	Other specified disorders of cartilage, forearm
M94.8x4	Other specified disorders of cartilage, hand
M94.8x5	Other specified disorders of cartilage, thigh
M94.8x6	Other specified disorders of cartilage, lower leg
M94.8x7	Other specified disorders of cartilage, ankle and foot
M94.8x8	Other specified disorders of cartilage, other site
M94.8x9	Other specified disorders of cartilage, unspecified sites
M94.9	Disorder of cartilage, unspecified

OTHER DISORDERS OF THE MUSCULOSKELETAL SYSTEM AND CONNECTIVE TISSUE (M95)

M95 Other acquired deformities of musculoskeletal system and connective tissue

Excludes2 acquired absence of limbs and organs (Z89-Z90)
acquired deformities of limbs (M20-M21)
congenital malformations and deformations of the musculoskeletal system (Q65-Q79)
deforming dorsopathies (M40-M43)
dentofacial anomalies [including malocclusion] (M26.-)
postprocedural musculoskeletal disorders (M96.-)

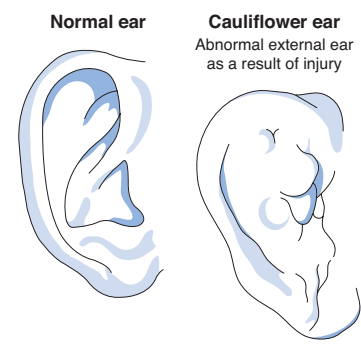
M95.0 Acquired deformity of nose

Excludes2 deviated nasal septum (J34.2)

M95.1 Cauliflower ear

Excludes2 other acquired deformities of ear (H61.1)

M95.10 Cauliflower ear, unspecified ear



M95.11 Cauliflower ear, right ear

M95.12 Cauliflower ear, left ear

M95.2 Other acquired deformity of head

M95.3 Acquired deformity of neck

M95.4 Acquired deformity of chest and rib

M95.5 Acquired deformity of pelvis

Excludes1 maternal care for known or suspected disproportion (O33.-)

M95.8 Other specified acquired deformities of musculoskeletal system

M95.9 Acquired deformity of musculoskeletal system, unspecified

- N50.1 Vascular disorders of male genital organs**
Hematocele, NOS, of male genital organs
Hemorrhage of male genital organs
Thrombosis of male genital organs
- N50.8 Other specified disorders of male genital organs**
Atrophy of scrotum, seminal vesicle, spermatic cord, tunica vaginalis and vas deferens
Edema of scrotum, seminal vesicle, spermatic cord, testis, tunica vaginalis and vas deferens
Hypertrophy of scrotum, seminal vesicle, spermatic cord, testis, tunica vaginalis and vas deferens
Ulcer of scrotum, seminal vesicle, spermatic cord, testis, tunica vaginalis and vas deferens
Chylocele, tunica vaginalis (nonfilarial) NOS
Urethrosrotal fistula
Stricture of spermatic cord, tunica vaginalis, and vas deferens

DEF A cystlike lesion resulting from the escape of chyle (milky fluid consisting of lymph and emulsified fat) into the tunica vaginalis of the testes.

- N50.9 Disorder of male genital organs, unspecified**

N51 Disorders of male genital organs in diseases classified elsewhere

Code first underlying disease, such as: filariasis (B74.0-B74.9)

- Excludes1** amebic balanitis (A06.8)
candidal balanitis (B37.42)
gonococcal balanitis (A54.23)
gonococcal prostaticitis (A54.22)
herpesviral [herpes simplex] balanitis (A60.01)
trichomonal prostaticitis (A59.02)
tuberculous prostaticitis (A18.14)

N52 Male erectile dysfunction

Excludes1 psychogenic impotence (F52.21)

- N52.0 Vasculogenic erectile dysfunction**
- N52.01 Erectile dysfunction due to arterial insufficiency**
 - N52.02 Corporo-venous occlusive erectile dysfunction**
 - N52.03 Combined arterial insufficiency and corporo-venous occlusive erectile dysfunction**
- N52.1 Erectile dysfunction due to diseases classified elsewhere**
Code first underlying disease
- N52.2 Drug-induced erectile dysfunction**
- N52.3 Post-surgical erectile dysfunction**
- N52.31 Erectile dysfunction following radical prostatectomy**
 - N52.32 Erectile dysfunction following radical cystectomy**
 - N52.33 Erectile dysfunction following urethral surgery**
 - N52.34 Erectile dysfunction following simple prostatectomy**
 - N52.39 Other post-surgical erectile dysfunction**
- N52.8 Other male erectile dysfunction**
- N52.9 Male erectile dysfunction, unspecified**
Impotence NOS

N53 Other male sexual dysfunction

Excludes1 psychogenic sexual dysfunction (F52.-)

- N53.1 Ejaculatory dysfunction**
- Excludes1** premature ejaculation (F52.4)
- N53.11 Retarded ejaculation**
 - N53.12 Painful ejaculation**
 - N53.13 Anejaculatory orgasm**
 - N53.14 Retrograde ejaculation**
 - N53.19 Other ejaculatory dysfunction**
Ejaculatory dysfunction NOS
- N53.8 Other male sexual dysfunction**
- N53.9 Unspecified male sexual dysfunction**

DISORDERS OF THE BREAST (N60-N65)

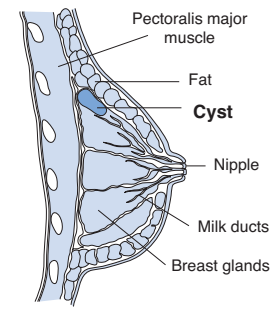
Excludes1 disorders of breast associated with childbirth (O91-O92)

N60 Benign mammary dysplasia

Includes fibrocystic mastopathy

- N60.0 Solitary cyst of breast**
Cyst of breast
- N60.01 Solitary cyst of right breast**
 - N60.02 Solitary cyst of left breast**
 - N60.09 Solitary cyst of unspecified breast**

Solitary cyst of the breast



- N60.1 Diffuse cystic mastopathy**
Cystic breast
Fibrocystic disease of breast
Excludes1 diffuse cystic mastopathy with epithelial proliferation (N60.3-)
- N60.11 Diffuse cystic mastopathy of right breast**
- N60.12 Diffuse cystic mastopathy of left breast**
- N60.19 Diffuse cystic mastopathy of unspecified breast**
- N60.2 Fibroadenosis of breast**
Adenofibrosis of breast
Excludes2 fibroadenoma of breast (D24.-)
- N60.21 Fibroadenosis of right breast**
- N60.22 Fibroadenosis of left breast**
- N60.29 Fibroadenosis of unspecified breast**
- N60.3 Fibrosclerosis of breast**
Cystic mastopathy with epithelial proliferation
- N60.31 Fibrosclerosis of right breast**
- N60.32 Fibrosclerosis of left breast**
- N60.39 Fibrosclerosis of unspecified breast**
- N60.4 Mammary duct ectasia**
DEF Dilated milk duct filled with fluid; becomes inflamed and clogged with a thick, sticky substance, causing discharge and tenderness.
- N60.41 Mammary duct ectasia of right breast**
 - N60.42 Mammary duct ectasia of left breast**
 - N60.49 Mammary duct ectasia of unspecified breast**
- N60.8 Other benign mammary dysplasias**
- N60.81 Other benign mammary dysplasias of right breast**
 - N60.82 Other benign mammary dysplasias of left breast**
 - N60.89 Other benign mammary dysplasias of unspecified breast**
- N60.9 Unspecified benign mammary dysplasia**
- N60.91 Unspecified benign mammary dysplasia of right breast**
 - N60.92 Unspecified benign mammary dysplasia of left breast**
 - N60.99 Unspecified benign mammary dysplasia of unspecified breast**
- N61 Inflammatory disorders of breast**
Abscess (acute) (chronic) (nonpuerperal) of areola
Abscess (acute) (chronic) (nonpuerperal) of breast
Carbuncle of breast
Infective mastitis (acute) (subacute) (nonpuerperal)
Mastitis (acute) (subacute) (nonpuerperal) NOS
Excludes1 inflammatory carcinoma of breast (C50.9)
inflammatory disorder of breast associated with childbirth (O91.-)
neonatal infective mastitis (P39.0)
thrombophlebitis of breast [Mondor's disease] (I80.8)
- N62 Hypertrophy of breast**
Gynecomastia
Hypertrophy of breast NOS
Massive pubertal hypertrophy of breast
Excludes1 breast engorgement of newborn (P83.4)
disproportion of reconstructed breast (N65.1)
- DEF** Abnormal largeness of the breast.
- N63 Unspecified lump in breast**
Nodule(s) NOS in breast

- 7 S29.092- Other injury of muscle and tendon of back wall of thorax
- 7 S29.099- Other injury of muscle and tendon of unspecified wall of thorax
- 7 S29.8xx- Other specified injuries of thorax
- 7 S29.9xx- Unspecified injury of thorax

INJURIES TO THE ABDOMEN, LOWER BACK, LUMBAR SPINE, PELVIS AND EXTERNAL GENITALS (S30-S39)

Includes injuries to the abdominal wall
injuries to the anus
injuries to the buttock
injuries to the external genitalia
injuries to the flank
injuries to the groin

Excludes2 burns and corrosions (T20-T32)
effects of foreign body in anus and rectum (T18.5)
effects of foreign body in genitourinary tract (T19.-)
effects of foreign body in stomach, small intestine and colon (T18.2-T18.4)
frostbite (T33-T34)
insect bite or sting, venomous (T63.4)

S30 Superficial injury of abdomen, lower back, pelvis and external genitals

Excludes2 superficial injury of hip (S70.-)

The appropriate 7th character is to be added to each code from category S30

A initial encounter
D subsequent encounter
S sequela

- 7 S30.0xx- Contusion of lower back and pelvis
Contusion of buttock
- 7 S30.1xx- Contusion of abdominal wall
Contusion of flank
Contusion of groin
- S30.2 Contusion of external genital organs
 - S30.20 Contusion of unspecified external genital organ
 - 7 S30.201- Contusion of unspecified external genital organ, male
 - 7 S30.202- Contusion of unspecified external genital organ, female
 - 7 S30.21x- Contusion of penis
 - 7 S30.22x- Contusion of scrotum and testes
 - 7 S30.23x- Contusion of vagina and vulva
- 7 S30.3xx- Contusion of anus
- S30.8 Other superficial injuries of abdomen, lower back, pelvis and external genitals
 - S30.81 Abrasion of abdomen, lower back, pelvis and external genitals
 - 7 S30.810- Abrasion of lower back and pelvis
 - 7 S30.811- Abrasion of abdominal wall
 - 7 S30.812- Abrasion of penis
 - 7 S30.813- Abrasion of scrotum and testes
 - 7 S30.814- Abrasion of vagina and vulva
 - 7 S30.815- Abrasion of unspecified external genital organs, male
 - 7 S30.816- Abrasion of unspecified external genital organs, female
 - 7 S30.817- Abrasion of anus
 - S30.82 Blister (nonthermal) of abdomen, lower back, pelvis and external genitals
 - 7 S30.820- Blister (nonthermal) of lower back and pelvis
 - 7 S30.821- Blister (nonthermal) of abdominal wall
 - 7 S30.822- Blister (nonthermal) of penis
 - 7 S30.823- Blister (nonthermal) of scrotum and testes
 - 7 S30.824- Blister (nonthermal) of vagina and vulva

- 7 S30.825- Blister (nonthermal) of unspecified external genital organs, male
- 7 S30.826- Blister (nonthermal) of unspecified external genital organs, female
- 7 S30.827- Blister (nonthermal) of anus
- S30.84 External constriction of abdomen, lower back, pelvis and external genitals
 - 7 S30.840- External constriction of lower back and pelvis
 - 7 S30.841- External constriction of abdominal wall
 - 7 S30.842- External constriction of penis
Hair tourniquet syndrome of penis
Use additional cause code to identify the constricting item (W49.0-)
 - 7 S30.843- External constriction of scrotum and testes
 - 7 S30.844- External constriction of vagina and vulva
 - 7 S30.845- External constriction of unspecified external genital organs, male
 - 7 S30.846- External constriction of unspecified external genital organs, female
- S30.85 Superficial foreign body of abdomen, lower back, pelvis and external genitals
Splinter in the abdomen, lower back, pelvis and external genitals
 - 7 S30.850- Superficial foreign body of lower back and pelvis
 - 7 S30.851- Superficial foreign body of abdominal wall
 - 7 S30.852- Superficial foreign body of penis
 - 7 S30.853- Superficial foreign body of scrotum and testes
 - 7 S30.854- Superficial foreign body of vagina and vulva
 - 7 S30.855- Superficial foreign body of unspecified external genital organs, male
 - 7 S30.856- Superficial foreign body of unspecified external genital organs, female
 - 7 S30.857- Superficial foreign body of anus
- S30.86 Insect bite (nonvenomous) of abdomen, lower back, pelvis and external genitals
 - 7 S30.860- Insect bite (nonvenomous) of lower back and pelvis
 - 7 S30.861- Insect bite (nonvenomous) of abdominal wall
 - 7 S30.862- Insect bite (nonvenomous) of penis
 - 7 S30.863- Insect bite (nonvenomous) of scrotum and testes
 - 7 S30.864- Insect bite (nonvenomous) of vagina and vulva
 - 7 S30.865- Insect bite (nonvenomous) of unspecified external genital organs, male
 - 7 S30.866- Insect bite (nonvenomous) of unspecified external genital organs, female
 - 7 S30.867- Insect bite (nonvenomous) of anus
- S30.87 Other superficial bite of abdomen, lower back, pelvis and external genitals
 - Excludes1** open bite of abdomen, lower back, pelvis and external genitals (S31.05, S31.15, S31.25, S31.35, S31.45, S31.55)
 - 7 S30.870- Other superficial bite of lower back and pelvis

W33 Accidental rifle, shotgun and larger firearm discharge and malfunction

Includes rifle, shotgun and larger firearm discharge and malfunction NOS

Excludes1 *accidental airgun discharge and malfunction (W34.010, W34.110)*
accidental BB gun discharge and malfunction (W34.010, W34.110)
accidental handgun discharge and malfunction (W32-)
accidental pellet gun discharge and malfunction (W34.010, W34.110)
assault by rifle, shotgun and larger firearm discharge (X94)
firearm discharge involving legal intervention (Y35.0-)
firearm discharge involving military or war operations (Y36.4-)
intentional self-harm by rifle, shotgun and larger firearm discharge (X73)

The appropriate 7th character is to be added to each code from category W33

A *initial encounter*
 D *subsequent encounter*
 S *sequela*

W33.0 Accidental rifle, shotgun and larger firearm discharge

7 W33.00x- **Accidental discharge of unspecified larger firearm**

Discharge of unspecified larger firearm NOS

7 W33.01x- **Accidental discharge of shotgun**

Discharge of shotgun NOS

7 W33.02x- **Accidental discharge of hunting rifle**

Discharge of hunting rifle NOS

7 W33.03x- **Accidental discharge of machine gun**

Discharge of machine gun NOS

7 W33.09x- **Accidental discharge of other larger firearm**

Discharge of other larger firearm NOS

W33.1 Accidental rifle, shotgun and larger firearm malfunction

Injury due to explosion of rifle, shotgun and larger firearm (parts)

Injury due to malfunction of mechanism or component of rifle, shotgun and larger firearm

Injury due to piercing, cutting, crushing or pinching due to (by) slide trigger mechanism, scope or other gunpart

Injury due to recoil of rifle, shotgun and larger firearm

Powder burn from rifle, shotgun and larger firearm

7 W33.10x- **Accidental malfunction of unspecified larger firearm**

Malfunction of unspecified larger firearm NOS

7 W33.11x- **Accidental malfunction of shotgun**

Malfunction of shotgun NOS

7 W33.12x- **Accidental malfunction of hunting rifle**

Malfunction of hunting rifle NOS

7 W33.13x- **Accidental malfunction of machine gun**

Malfunction of machine gun NOS

7 W33.19x- **Accidental malfunction of other larger firearm**

Malfunction of other larger firearm NOS

W34 Accidental discharge and malfunction from other and unspecified firearms and guns

The appropriate 7th character is to be added to each code from category W34

A *initial encounter*
 D *subsequent encounter*
 S *sequela*

W34.0 Accidental discharge from other and unspecified firearms and guns

7 W34.00x- **Accidental discharge from unspecified firearms or gun**

Discharge from firearm NOS

Gunshot wound NOS

Shot NOS

W34.01 **Accidental discharge of gas, air or spring-operated guns**

7 W34.010- **Accidental discharge of airgun**
 Accidental discharge of BB gun
 Accidental discharge of pellet gun

7 W34.011- **Accidental discharge of paintball gun**
 Accidental injury due to paintball discharge

7 W34.018- **Accidental discharge of other gas, air or spring-operated gun**

7 W34.09x- **Accidental discharge from other specified firearms**

Accidental discharge from Very pistol [flare]

W34.1 Accidental malfunction from other and unspecified firearms and guns

7 W34.10x- **Accidental malfunction from unspecified firearms or gun**

Firearm malfunction NOS

W34.11 Accidental malfunction of gas, air or spring-operated guns

7 W34.110- **Accidental malfunction of airgun**

Accidental malfunction of BB gun

Accidental malfunction of pellet gun

7 W34.111- **Accidental malfunction of paintball gun**

Accidental injury due to paintball gun malfunction

7 W34.118- **Accidental malfunction of other gas, air or spring-operated gun**

7 W34.19x- **Accidental malfunction from other specified firearms**

Accidental malfunction from Very pistol [flare]

7 W35.xxx- Explosion and rupture of boiler

Excludes1 *explosion and rupture of boiler on watercraft (V93.4)*

The appropriate 7th character is to be added to code W35

A *initial encounter*
 D *subsequent encounter*
 S *sequela*

W36 Explosion and rupture of gas cylinder

The appropriate 7th character is to be added to each code from category W36

A *initial encounter*
 D *subsequent encounter*
 S *sequela*

7 W36.1xx- **Explosion and rupture of aerosol can**

7 W36.2xx- **Explosion and rupture of air tank**

7 W36.3xx- **Explosion and rupture of pressurized-gas tank**

7 W36.8xx- **Explosion and rupture of other gas cylinder**

7 W36.9xx- **Explosion and rupture of unspecified gas cylinder**

W37 Explosion and rupture of pressurized tire, pipe or hose

The appropriate 7th character is to be added to each code from category W37

A *initial encounter*
 D *subsequent encounter*
 S *sequela*

7 W37.0xx- **Explosion of bicycle tire**

7 W37.8xx- **Explosion and rupture of other pressurized tire, pipe or hose**

7 W38.xxx- Explosion and rupture of other specified pressurized devices

The appropriate 7th character is to be added to code W38

A *initial encounter*
 D *subsequent encounter*
 S *sequela*

7 W39.xxx- Discharge of firework

The appropriate 7th character is to be added to code W39

A *initial encounter*
 D *subsequent encounter*
 S *sequela*