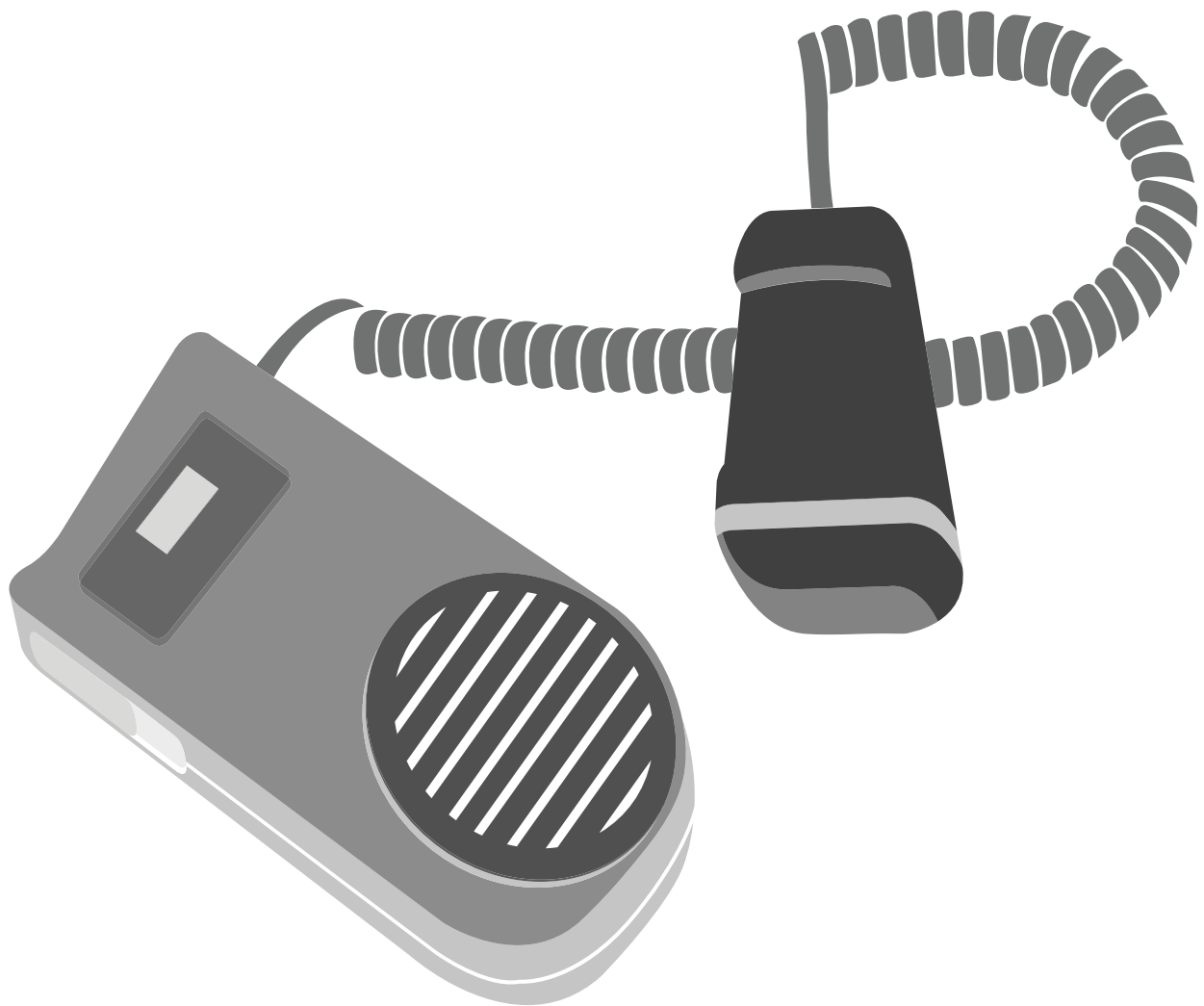


contexo | media

Illustrated Coding and Billing for
OB/GYN

A Comprehensive Specialty Guide



Expert

2010

Contents

Introduction	i	ICD-9-CM Diagnostic Coding	337
Medical Terms, Common Abbreviations, and Basic Anatomy.....	i	ICD-9-CM Format.....	337
Medical Documentation.....	i	ICD-9-CM Conventions.....	338
Reimbursement and Payers.....	i	ICD-9-CM Coding.....	339
CPT Procedural Coding.....	i	2010 OB/GYN Diagnostic Code Index.....	339
ICD-9-CM Diagnostic Coding.....	ii	HCPCS Level II Codes	365
HCPCS Level II Codes.....	ii	HCPCS Level II Code Structure.....	365
Modifiers.....	ii	HCPCS Level II Symbols.....	365
Evaluation and Management (E/M) Services.....	ii	How to Use HCPCS Level II Codes.....	365
Medicare Official Regulatory References.....	ii	HCPCS Level II Update.....	366
Coding Guidance.....	ii	Durable Medical Equipment.....	366
Terminology, Abbreviations, and Basic Anatomy	1	2010 OB/GYN HCPCS Level II Code Index.....	367
Medical Terminology.....	1	Modifiers	373
OB/GYN Terms.....	3	Modifier Usage.....	373
Abbreviations.....	21	CPT Modifiers.....	373
Anatomy.....	23	Approved Modifiers for Ambulatory Surgery Center (ASC) Hospital Outpatient Use.....	377
Anatomical Planes.....	23	2010 HCPCS Level II Modifiers.....	379
OB/GYN Anatomy.....	24	Evaluation and Management Services	387
Medical Documentation	29	Evaluation and Management Services Documentation.....	387
Medical Record Documentation Guidelines.....	29	Specific Definitions and Guidance for Exam Elements.....	389
Medical Record Components.....	29	OB/GYN Examination.....	392
Post-Payment Documentation.....	30	Medical Decision Making.....	395
Archiving Medical Records.....	30	Office or Other Outpatient Services (99201-99215).....	396
Release of Medical Record Information.....	30	Hospital Observation Services (99217-99220).....	396
HIPAA.....	32	Hospital Inpatient Services (99221-99239).....	396
Reimbursement and Payers	35	Consultations (99241-99255).....	396
Claim Forms.....	35	Emergency Department Services (99281-99285).....	397
The Collection Process.....	35	Critical Care Services (99291-99292).....	397
RBRVS and Fee Setting.....	38	Nursing Facility Services (99304-99318).....	397
Medicare.....	40	Preventive Medicine Services (99381-99397).....	398
Durable Medical Equipment.....	42	Appendix A: Medicare Policies	399
Medicaid.....	42	Pub. 100-02 Medicare Benefit Policy Manual.....	399
Medigap.....	42	Pub. 100-03 Medicare National Coverage Determinations Manual.....	400
Commercial Payers.....	43	Appendix B: Correct Coding Initiative	431
Blue Cross and Blue Shield Plans.....	43	A. Introduction.....	431
Managed Care Plans (HMOs/PPOs).....	43	B. Evaluation and Management (E&M) Services.....	431
TRICARE.....	43	C. Urinary System.....	431
CPT Procedural Coding	45	D. Male Genital System.....	433
The CPT Book.....	45	E. Female Genital System.....	433
Locating a CPT Code.....	46	F. Laparoscopy.....	433
CPT Symbols.....	47	G. Maternity Care and Delivery.....	433
Add-on Codes.....	47	H. Medical Unlikely Edits (MUEs).....	434
Modifiers.....	47	I. General Policy Statements.....	434
Unlisted Procedure or Service.....	47	Appendix C: Modifier Rules	437
Surgical Package.....	47	Mult Proc = Multiple Procedure (Modifier 51).....	437
Category II Codes.....	48	Bilat Surg = Bilateral Surgery (Modifier 50).....	437
Category III Codes.....	48	Asst Surg = Assistant at Surgery (Modifier 80).....	438
2010 OB/GYN CPT Codes and Crosswalks.....	48	Co Surg = Co-surgeons (Modifier 62).....	438
2010 OB/GYN CPT Index.....	315	Team Surg = Team Surgery (Modifier 66).....	438

57420

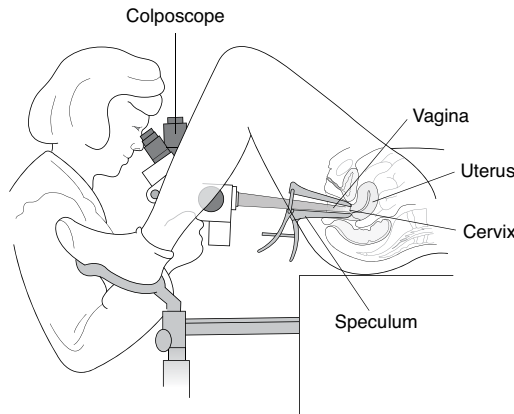
57420 Colposcopy of the entire vagina, with cervix if present;

Plain English Description

A colposcope is inserted into the vagina. This allows the physician to inspect the entire vagina all the way to the cervix.

Colposcopy of Vagina

The vagina and cervix are inspected through a colposcope and a tissue sample may be taken



CTI To add an endometrial biopsy – 58110. For colposcopy of the vulva – 56820; for colposcopy of the cervix – 57452. For colposcopy of vulva with biopsy – 56821; cervical colposcopy with biopsy – 57454-57455. Colposcopies of multiple sites may be reported using modifier 51

ICD-9-CM Diagnostic Codes (commonly used)

- 079.4** Human papillomavirus in conditions classified elsewhere and of unspecified site
- 182.0** Malignant neoplasm of corpus uteri, except isthmus ♀
- 616.0** Cervicitis and endocervicitis ♀
- 616.10** Vaginitis and vulvovaginitis, unspecified ♀
- 616.2** Cyst of Bartholin's gland ♀
- 616.3** Abscess of Bartholin's gland ♀
- 616.4** Other abscess of vulva ♀
- 616.81** Mucositis (ulcerative) of cervix, vagina, and vulva ♀
- 616.89** Other inflammatory disease of cervix, vagina, and vulva ♀
- 616.9** Unspecified inflammatory disease of cervix, vagina, and vulva ♀
- 617.0** Endometriosis of uterus ♀
- 617.8** Endometriosis of other specified sites ♀
- 618.09** Other prolapse of vaginal walls without mention of uterine prolapse ♀
- 618.1** Uterine prolapse without mention of vaginal wall prolapse ♀
- 618.2** Uterovaginal prolapse, incomplete ♀
- 618.3** Uterovaginal prolapse, complete ♀

- 618.4** Uterovaginal prolapse, unspecified ♀
- 618.5** Prolapse of vaginal vault after hysterectomy ♀
- 618.6** Vaginal enterocele, congenital or acquired ♀
- 618.82** Incompetence or weakening of rectovaginal tissue ♀
- 622.10** Dysplasia of cervix, unspecified ♀
- 623.0** Dysplasia of vagina ♀
- 623.1** Leukoplakia of vagina ♀
- 623.2** Stricture or atresia of vagina ♀
- 623.3** Tight hymenal ring ♀
- 623.4** Old vaginal laceration ♀
- 623.5** Leukorrhea, not specified as infective ♀
- 623.6** Vaginal hematoma ♀
- 623.7** Polyp of vagina ♀
- 623.8** Other specified noninflammatory disorders of vagina ♀
- 624.8** Other specified noninflammatory disorders of vulva and perineum ♀
- 625.5** Pelvic congestion syndrome ♀
- 626.2** Excessive or frequent menstruation ♀
- 627.3** Postmenopausal atrophic vaginitis ♀
- 795.00** Abnormal glandular Papanicolaou smear of cervix ♀
- 795.01** Papanicolaou smear of cervix with atypical squamous cells of undetermined significance (ASC-US) ♀
- 795.02** Papanicolaou smear of cervix with atypical squamous cells cannot exclude high grade squamous intraepithelial lesion (ASC-H) ♀
- 795.03** Papanicolaou smear of cervix with low grade squamous intraepithelial lesion (LSIL) ♀
- V76.2** Special screening for malignant neoplasms, cervix

HCPCS Code(s)

No crosswalks apply to this code or code range.

Anesthesia Code(s)

No crosswalks apply to this code or code range.

RVU(s)

Code	Work	PE Facility	PE Non-Facility	MP	Total Non-Facility	Total Facility	Global	Status
57420	1.6	.61	1.28	.19	3.07	2.4	000	A

Modifiers*

Code	Modifier	Code	Modifier	Code	Modifier	Code	Modifier
57420	50						

CCI

57420 00940⁰, 36000¹, 36410¹, 37202¹, 51701⁰, 51702⁰, 51703¹, 57061⁰, 57100⁰, 57180⁰, 57410⁰, 57452⁰, 62318¹, 62319¹, 64415¹, 64417¹, 64430¹, 64435¹, 64450¹, 64470¹, 64475¹, 69990⁰, 96360¹, 96365¹, 96372¹, 96374¹, 96375¹

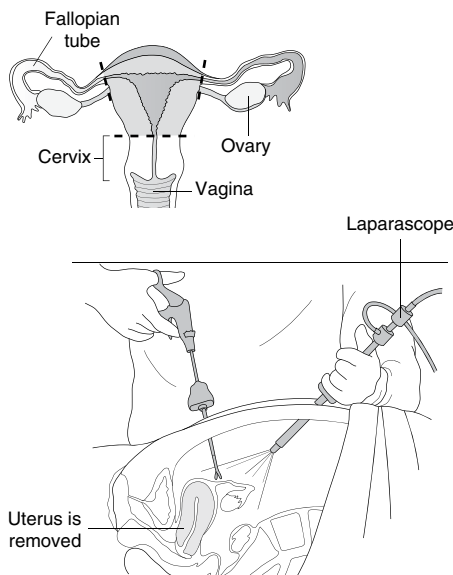
58541–58542

- 58541** Laparoscopy, surgical, supracervical hysterectomy, for uterus 250 g or less;
- 58542** Laparoscopy, surgical, supracervical hysterectomy, for uterus 250 g or less; with removal of tube(s) and/or ovary(s)

Plain English Description

Laparoscopic supracervical hysterectomy (LSH) is performed to remove a uterus 250g or less. LSH is a minimally invasive way to remove the uterus as an alternative to total abdominal hysterectomy. LSH maintains better pelvic support because the ligaments that hold up the vagina and cervix are left intact. This procedure also preserves sexual function by maintaining the cervix and its secretory glands. LSH is not done on cancer patients or those with history of precancerous cervical pathology. A retractor is placed vaginally into the cervix to aid in moving the uterus for visualization. A small belly button incision and two small hip bone area incisions are made for placing the laparoscopic instruments and the abdomen is inflated with carbon dioxide gas. The scope is inserted in the belly button incision and the cutting/grasping instrument and retractor are operated through the other two incisions. The uterus alone (58541) or the uterus along with the fallopian tubes and/or ovaries (58542) is separated from the blood supply and released from its attachment to the cervix. Permanent sutures are placed in the ligaments that hold up the cervix for greater support against later prolapse. The center of the cervix is coagulated to prevent bleeding problems, and then the cervix is covered with peritoneum, the lining of the abdomen. Instruments are then changed to a morcellator, a rounded blade on the end of a tube, and a small camera. The uterus with or without tubes and/or ovaries are delivered out of the abdomen in strips and sent to pathology. Bleeders are coagulated, instruments are removed, and the gas is emptied from the abdomen before closing the incisions.

Laparoscopic Supracervical Hysterectomy For uterus 250 g or less



CTI Do not code 49320, 57000, 57180, 57410, 58140-58146, 58545-58546, 58561, 58661, or 58670-58671.

ICD-9-CM Diagnostic Codes (commonly used)

- 180.9** Malignant neoplasm of cervix uteri, unspecified site ♀
- 182.0** Malignant neoplasm of corpus uteri, except isthmus ♀
- 182.1** Malignant neoplasm of isthmus ♀
- 182.8** Malignant neoplasm of other specified sites of body of uterus ♀
- 183.0** Malignant neoplasm of ovary ♀
- 183.2** Malignant neoplasm of fallopian tube ♀

- 184.0** Malignant neoplasm of vagina ♀
- 198.6** Secondary malignant neoplasm of ovary ♀
- 198.82** Secondary malignant neoplasm of genital organs
- 220** Benign neoplasm of ovary ♀
- 221.1** Benign neoplasm of vagina ♀
- 233.1** Carcinoma in situ of cervix uteri ♀
- 233.2** Carcinoma in situ of other and unspecified parts of uterus ♀
- 256.31** Premature menopause ♀
- 614.3** Acute parametritis and pelvic cellulitis ♀
- 614.4** Chronic or unspecified parametritis and pelvic cellulitis ♀
- 617.0** Endometriosis of uterus ♀
- 617.1** Endometriosis of ovary ♀
- 617.2** Endometriosis of fallopian tube ♀
- 617.3** Endometriosis of pelvic peritoneum ♀
- 617.4** Endometriosis of rectovaginal septum and vagina ♀
- 617.9** Endometriosis, site unspecified ♀
- 621.2** Hypertrophy of uterus ♀
- 626.2** Excessive or frequent menstruation ♀
- 626.4** Irregular menstrual cycle ♀
- 626.6** Menorrhagia ♀
- 626.8** Other disorders of menstruation and other abnormal bleeding from female genital tract ♀
- 627.0** Premenopausal menorrhagia ♀
- 627.1** Postmenopausal bleeding ♀
- 627.2** Symptomatic menopausal or female climacteric states ♀

HCPCS Code(s)

No crosswalks apply to this code or code range.

Anesthesia Code(s)

00840

RVU(s)

Code	Work	PE Facility	PE Non-Facility	MP	Total Non-Facility	Total Facility	Global	Status
58541	14.57	6.37	6.37	1.68	22.62	22.62	090	A
58542	16.43	6.94	6.94	1.69	25.06	25.06	090	A

Modifiers*

Code	Modifier	Code	Modifier	Code	Modifier	Code	Modifier
58541	50	58542	50				

CCI

- 58541** 36000¹, 36410¹, 37202¹, 43752¹, 44005⁰, 44180⁰, 49320¹, 50715¹, 51701¹, 51702¹, 51703¹, 57000¹, 57180¹, 57410⁰, 58100¹, 58140¹, 58145¹, 58146¹, 58260^{1E}, 58545¹, 58546¹, 58558¹, 58561¹, 58660⁰, 58661¹, 58670¹, 58671¹, 58672¹, 58673¹, 58700¹, 58720¹, 58940¹, 62318¹, 62319¹, 64415¹, 64416¹, 64417¹, 64430¹, 64435¹, 64450¹, 64470¹, 64475¹, 69990⁰, 96360¹, 96365¹, 96372¹, 96374¹, 96375¹
- 58542** 36000¹, 36410¹, 37202¹, 43752¹, 44005⁰, 44180⁰, 49320¹, 50715¹, 51701¹, 51702¹, 51703¹, 57000¹, 57180¹, 57410⁰, 58100¹, 58140¹, 58145¹, 58146¹, 58180^{1E}, 58260^{1E}, 58262^{1E}, 58270^{1E}, 58541¹, 58545¹, 58546¹, 58550^{1E}, 58558⁰, 58561¹, 58660⁰, 58661¹, 58670¹, 58671¹, 58672¹, 58673¹, 58700¹, 58720¹, 58940¹, 62318¹, 62319¹, 64415¹, 64416¹, 64417¹, 64430¹, 64435¹, 64450¹, 64470¹, 64475¹, 69990⁰, 96360¹, 96365¹, 96372¹, 96374¹, 96375¹

* See Appendix C for Modifier Rules

Do Not Code

GO Code

▲ Revised Code

● New Code

** See Appendix for CCI information

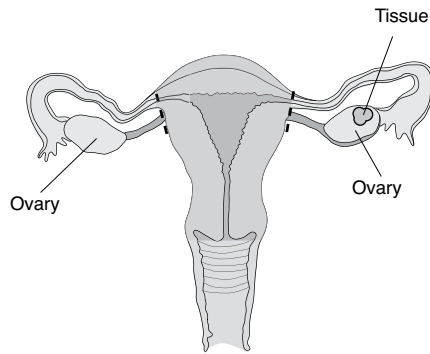
58900

58900 Biopsy of ovary, unilateral or bilateral (separate procedure)

Plain English Description

The physician creates an incision above the vulva or through the vagina to access one or both ovaries. As sample of tissue is obtained from one or both ovaries and the incision is closed with simple closure.

Biopsy of ovary, unilateral or bilateral (separate procedure)



The physician creates an incision above the vulva or through the vagina to access one or both ovaries. As sample of tissue is obtained from one or both ovaries and the incision is closed with simple closure

Coding Guidance

CTI For laparoscopic biopsy of ovary – 49321. Do not code 49203-49205 and/or 58956-58958.

ICD-9-CM Diagnostic Codes (commonly used)

- 183.0** Malignant neoplasm of ovary ♀
- 198.6** Secondary malignant neoplasm of ovary ♀
- 220** Benign neoplasm of ovary ♀
- 236.2** Neoplasm of uncertain behavior of ovary ♀
- 239.5** Neoplasm of unspecified nature of other genitourinary organs
- 552.1** Umbilical hernia with obstruction
- 614.0** Acute salpingitis and oophoritis ♀
- 614.1** Chronic salpingitis and oophoritis ♀
- 614.2** Salpingitis and oophoritis not specified as acute, subacute, or chronic ♀
- 617.1** Endometriosis of ovary ♀

- 620.0** Follicular cyst of ovary ♀
- 620.2** Other and unspecified ovarian cyst ♀
- 620.3** Acquired atrophy of ovary and fallopian tube ♀
- 620.4** Prolapse or hernia of ovary and fallopian tube ♀
- 620.5** Torsion of ovary, ovarian pedicle, or fallopian tube ♀
- 620.8** Other noninflammatory disorders of ovary, fallopian tube, and broad ligament ♀
- 620.9** Unspecified noninflammatory disorder of ovary, fallopian tube, and broad ligament ♀
- 625.3** Dysmenorrhea ♀
- 625.5** Pelvic congestion syndrome ♀
- 625.8** Other specified symptoms associated with female genital organs ♀
- 625.9** Unspecified symptom associated with female genital organs ♀
- 626.0** Absence of menstruation ♀
- 628.0** Infertility, female associated with anovulation ♀
- 789.04** Abdominal pain, left lower quadrant

HCPCS Codes

No crosswalks apply to this code or code range.

Anesthesia Code(s):

00840

RVU(s)

Code	Work	PE Facility	PE Non-Facility	MP	Total Non-Facility	Total Facility	Global	Status
58900	6.51	3.64	3.64	.69	10.84	10.84	090	A

Modifiers*

Code	Modifier	Code	Modifier	Code	Modifier	Code	Modifier
58900	N/A						

CCI

58900 10021¹, 10022¹, 36000¹, 36410¹, 37202¹, 44005⁰, 44180¹, 44820⁰, 44850⁰, 44950⁰, 49000⁰, 49002¹, 49010⁰, 49255⁰, 49570⁰, 50715¹, 51701¹, 51702¹, 51703¹, 57410⁰, 58140⁰, 58660¹, 58805⁰, 62318¹, 62319¹, 64415¹, 64416¹, 64417¹, 64450¹, 64470¹, 64475¹, 69990⁰, 96360¹, 96365¹, 96372¹, 96374¹, 96375¹

Count – continued

- complete blood count
 - differential WBC, 85004-85007, 85009
 - hematocrit, 85014
 - hemoglobin, 85018
 - hemogram
 - automated, 85025-85027
 - manual, 85032
 - microhematocrit, 85013
 - red blood cell (RBC), 85032-85041
 - reticulocyte, 85044-85046
 - smear, 85007-85008
- erythrocyte, 85032-85041
- leukocyte, 85032, 85048, 89055
- reticulocyte, 85044-85045

Cryo-

- preservation
 - cells, 88240-88241
 - embryo, 89258
 - thawing, 89352
 - oocyte, 89353
 - sperm, 89259
 - thawing, 89356
 - storage, 38207, 88240
 - testes, 89335
 - tissue, 89354
- surgery
 - lesion
 - anus, 46916, 46924
 - benign, 17110-17111
 - vagina, 57061-57065
 - vulva, 56501-56515
 - tumor

CT scan

- see computed tomography

Culture

- analysis
 - chromosome, 88230, 88233, 88235, 88237
- bacteria, 87040-87077, 87081, 87086-87088
- chlamydia, 87110
- oocytes, 89250-89251, 89272
- yeast, 87106

Curettage

- and dilation, 59840
 - cervical stump, 57558
 - cervix, 57520-57522, 57558, 57800
 - corpus uteri, 58120
 - hysteroscopy, 58558
 - injections, 59851
 - postpartum, 59160
 - suppositories, 59856
- endocervical, 57454-57456, 57505
- endometrial, 58356
- hydatidiform mole, 59870
- postpartum, 59160
- uterus, 58356, 59160

Cyst

- aspiration
 - breast, 19000-19001
 - ovarian, 49322
- destruction
 - intra-abdominal, 49203-49205
- drainage
 - injection, 49424, 76080
 - ovary, 58800-58805

Cyst

- excision
 - breast, 19120
 - gland
 - Bartholin's, 56740
 - lymph node, 38550-38555
 - intra-abdominal, 49203-49205
 - vagina, 57135
- repair
 - gland
 - Bartholin's, 56740

Cystectomy

- ovarian, 58925

Cytopathology

- cervical, 88141-88155, 88164-88167, 88174-88175
- evaluation, 88172-88173
- flow cytometry, 3170F, 88184-88189
- fluids, 88104-88107
- prep, 88142-88143, 88174-88175
- sex chromatin, 88130-88140
- slides
 - cervical or vaginal, 88150-88155, 88164-88167
- smears, 88107-88108
 - blood, 88140
 - cervical or vaginal, 88147-88148
 - other source, 88160-88162
- vaginal, 88141-88155, 88164-88167, 88174-88175

Delivery

- aborted fetus, 59850-59857
- cesarean, 01961, 01968, 59510-59515, 59618-59622
 - attempted vaginal, 59618-59622
- placenta, 59414
- vaginal, 59400-59410
 - cesarean, 59618-59622

Destruction

- cyst
 - abdominal, 49203-49205
- lesion
 - vagina, 57061-57065
 - vulva, 56501-56515
- tumor
 - abdominal, 49203-49205
 - uterus, 58356

Device

- removal
 - intrauterine, 58301

Diagnostic

- injection, 20501
 - intra-arterial, 96373, 96379
 - intramuscular, 96372
 - intravenous, 96374-96379
 - subcutaneous, 96372
- ultrasound
 - obstetrical, 76801-76828

Dilation

- cervix, 57558, 57800
- curettage
 - abortion, 59840, 59851, 59856
 - cervix, 58120
 - canal, 57800
 - conization, 57520-57522
 - stump, 57558
 - hysteroscopy, 58558
 - postpartum, 59160

Dilation – continued

evacuation, abotion, 59841, 59851
vagina, 57400

Dissection

lymph nodes, 38542, 38550-38555

Drainage

abscess
abdominal, 49020-49062
appendix, 44900-44901
ovary, 55820-55822, 58823
pelvic, 45000, 58823
pericolic, 58823
peritoneal, 49020-49021, 49060-49061
rectum, 45005-45020, 46040, 46060
amniotic fluid, 59000-59001
cyst
breast, 19000-19001
ovary, 58800-58805
hematoma
vagina, 57022-57023
paracentesis
abdominal, 49080-49081

Drug

analysis, 80103
delivery, 0186T, 96365-96379
insertion
intra-arterial, 36260
intravenous, 36563
removal
intra-arterial, 36262
repair
intravenous, 36576
replacement
intravenous, 36583
revision
intra-arterial, 36261
screen, 80100-80101, 82486

Dual

absorptiometry
photon, 78351
x-ray, 77080-77082

Duct

mammary
galactogram, 77053-77054
injection, 19030

Ectopic

pregnancy treatment, 59120-59151

Electrode

cervical loop biopsy, 57460-57461, 57522

Embryo

biopsy, 89290-89291
cryopreservation, 89258
culture, 89250-89251
hatching, 89253
inoculation, 87250
monitoring, 58050-59051, 99500
storage, 89342
thawing, 89352
transfer, 58974-58976
preparation, 89255
biopsy, 89290-89291
culture, 89250-89251, 89272
transfer, 58974-58976
preparation, 89255

Emission tomography

computerized
single photon (SPECT)
tumor, 78803

Emmet operation, 59300**Endometrial**

ablation, 58353-58356, 58563
biopsy, 58100-58110, 58558
destruction, 58353-58356, 58563
sampling, 58100-58110, 58558

Endometrioma, 49203-49205**Enterocoele, 57556, 58280****Episotomy, 59300****Erythrocyte**

antibody, 86850-86870
count, 85032-85041
hematocrit, 85014
morphology, 85007

Estex operation, 58825**Estradiol, 80415, 82670****Estriol, 82677****Estrogen, 3315F-3316F, 82671-82672, 84233****Estrone, 82679****Evacuation**

cervix, 59140
hydatidiform mole, 59870

Evaluation

sperm, 89329-89331

Evisceration, 58240,**Excision**

Bartholin's gland, 56740
duct, 56740
hemorrhoid, 46230
lesion
breast, 19120-19126
cervix, 57500
ovary, 58662
skin
benign, 11400-11446
malignant, 11600-11646
loop electrode, 57522
organ
cervix, 57540-57556
tumor
abdominal, 43610, 49203-49215
breast, 19120
uterus, 58140-58146
vaginal, 57135

Exenteration

pelvic, malignancy, 58240

Exploration

abdominal, 49000-49002, 49010
breast, 19020
nipple, 19110
vaginal, 57000

External

cephalic version, 59412

Fallopian tube

catheterization, 58345, 74742
excision, 58700-58720
laparoscopy, 58660-58679
ligation, 58600-58611