

contexo | media

Healthcare Common
Procedure Coding System

HCPCS

National Level II Codes



Professional

2010

Contents

Introductory Material

Introduction	i
HCPCS Level II Use and Conventions.....	v
HCPCS Level II Code Changes for 2010	viii

Alphabetical Index

Alphabetical Index for HCPCS Level II Codes	1
---	---

Tabular Index

Transportation Services Including Ambulance (A0021 - A0999) A Codes	1
Medical and Surgical Supplies (A4206 - A8004) A Codes	1
Administrative, Miscellaneous, and Investigational (A9150 - A9999) A Codes	11
Enteral and Parenteral Therapy (B4034 - B9999) B Codes.....	13
Pass-Through Items (C1300 - C9728) C Codes.....	14
Dental Procedures (D0120 - D9999) D Codes	18
Durable Medical Equipment (E0100 - E8002) E Codes.....	29
Procedures/Professional Services (G0008 - G9140) G Codes	40
Alcohol and Drug Abuse Treatment Services (H0001 - H2037) H Codes.....	54
Drugs Administered Other Than Oral Method (J0120 - J8999) J Codes	55
Chemotherapy Drugs (J9000 - J9999) J Codes	67
DME Supplies (K0001 - K0899) K Codes.....	70

Orthotic Procedures (L0112 - L4398) L Codes	72
Prosthetic Procedures (L5000 - L9900) L Codes	82
Medical Services (M0064 - M0301) M Codes	90
Laboratory and Pathology (P2028 - P9615) P Codes	91
Temporary Codes (Q0035 - Q9967) Q Codes	92
Diagnostic Radiology Services (R0070 - R0076) R Codes.....	96
Temporary National Codes (Non-Medicare) (S0012 - S9999) S Codes.....	96
National Codes Established for State Medicaid Agencies (T1000 - T5999) T Codes.....	105
Vision and Hearing Services (V2020 - V5364) V Codes.....	106

Appendices

HCPCS Level II Modifiers (Appendix A)	1
Table of Drugs (Appendix B)	5
Medicare References (Appendix C) National Coverage Decisions (NCD).....	33
Internet Only Manuals (Pub 100 References)	76
Social Security Act (SSA).....	177
Code of Federal Regulations (CFR)	188
Jurisdiction List (Appendix D)	189
Deleted Code Crosswalk (Appendix E)	195

Introduction

The information provided here is an abridged version of the procedures the Centers for Medicare and Medicaid Services (CMS) follows in making coding decisions for the Healthcare Common Procedure Coding System (HCPCS) Level II. To view the full text of the document, visit the CMS website at http://www.cms.hhs.gov/MedHCPCSGenInfo/Downloads/02_HCPCSCODINGPROCESS.asp#TopOfPage.

A. HCPCS Background Information

Each year in the United States, healthcare insurers process over five billion claims for payment. To ensure that these claims are processed in an orderly and consistent manner, standardized coding systems are essential. The HCPCS Level II code set is one of the standard code sets used for this purpose. The HCPCS is divided into two principal subsystems, referred to as Level I and Level II. Level I of the HCPCS is comprised of CPT (Current Procedural Terminology), a numeric coding system maintained by the American Medical Association (AMA). Healthcare professionals use the CPT to identify services and procedures for which they bill public or private health insurance programs. Decisions regarding the addition, deletion, or revision of CPT codes are made by the AMA.

Level II of the HCPCS is a standardized coding system used primarily to identify products, supplies, and services not included in the CPT codes, such as ambulance service, durable medical equipment, prosthetics, orthotics, and supplies (DMEPOS) when used outside a physician's office. Because Medicare and other insurers cover a variety of services, supplies, and equipment that are not identified by CPT codes, the Level II HCPCS codes were established for submitting claims for these items. Level II codes are also referred to as alpha-numeric codes because they consist of a single alphabetical letter followed by four numeric digits, while CPT codes are identified using five numeric digits.

In October of 2003, the Secretary of Health and Human Services (HHS) delegated authority under the Health Insurance Portability and Accountability Act (HIPAA) of 1996 legislation to CMS to maintain and distribute HCPCS Level II Codes.

Prior to December 31, 2003, Level III HCPCS were developed and used by Medicaid State agencies, Medicare contractors, and private insurers in their specific programs or local areas of jurisdiction. For purposes of Medicare, Level III codes were also referred to as local codes. Local codes were established when an insurer preferred that suppliers use a local code to identify a service, for which there is no Level I or Level II code, rather than use a "miscellaneous or not otherwise classified" code.

HIPAA required CMS to adopt standards for coding systems that are used for reporting healthcare transactions. Regulations provided for the elimination of Level III local codes by October 2002, at which time, the Level I and Level II code sets could be used. The elimination of local codes was postponed, as a result of section 532(a) of BIPA, which continued the use of local codes through December 31, 2003.

B. HCPCS Level II Codes

The regulation that CMS published on August 17, 2000 (45 CFR 162.10002), to implement the HIPAA requirement for standardized coding systems established the HCPCS Level II codes as the standardized coding system for describing and identifying healthcare

equipment and supplies in healthcare transactions that are not identified by the HCPCS Level I CPT codes. The HCPCS Level II coding system was selected as the standardized coding system because of its wide acceptance among both public and private insurers.

HCPCS is a system for identifying items and services. It is not a methodology or system for making coverage or payment determinations, and the existence of a code does not determine coverage or non-coverage for an item or service. While these codes are used for billing purposes, decisions regarding the addition, deletion, or revision of HCPCS codes are made independent of the process for making determinations regarding coverage and payment.

Currently, there are national HCPCS codes representing over 4,000 separate categories of similar items or services that encompass millions of products from different manufacturers. When submitting claims, suppliers are required to use one of these codes to identify the items they are billing. The descriptor that is assigned to a code represents the definition of the items and services that can be billed using that code.

C. Types of HCPCS Level II Codes

There are several types of HCPCS Level II codes, depending on the purpose for the codes and who is responsible for establishing and maintaining them.

Permanent National Codes

National permanent HCPCS Level II codes are maintained by the CMS HCPCS Workgroup. The Workgroup is responsible for making decisions about additions, revisions, and deletions to the permanent national alpha-numeric codes. These codes are for use by all private and public health insurers. Since HCPCS is a national coding system, all payers will be represented in the Workgroup including private insurance agencies, Pricing, Data Analysis, and Coding (PDAC), and Medicaid.

The permanent national codes serve the important function of providing a standardized coding system that is managed jointly by private and public insurers.

Dental Codes

The dental codes are a separate category of national codes. The Current Dental Terminology (CDT) is a publication copyrighted by the American Dental Association (ADA) that lists codes for billing dental procedures and supplies. The CDT is included in HCPCS Level II. Decisions regarding the revision, deletion, or addition of CDT codes are made by the ADA and not the CMS HCPCS Workgroup.

Miscellaneous Codes

National codes also include "miscellaneous/not otherwise classified" codes. These codes are used when a supplier is submitting a bill for an item or service and there is no existing national code that adequately describes the item or service being billed. The importance of miscellaneous codes is that they allow suppliers to begin billing immediately for a service or item as soon as it is allowed to be marketed by the Food and Drug Administration (FDA) even though there is no distinct code that describes the service or item. A miscellaneous code can be used during the period of time a request for a new code is being considered under the HCPCS review process. The use of miscellaneous codes also helps avoid the inefficiency and

Elastic

- bandage, A6448-A6455
- compression stocking, A6530-A6549

Elastoplast adhesive tape, A4450, A4452**Elavil**, J1320**Elbow**

- disarticulation, L6200-L6205, L6450
- electronic, L7170-L7191
- orthosis (EO), E1800-E1801, L3700-L3740, L3762
- prosthesis, L6100-L6130
- protector, E0191
- splint, S8452

Electrical work, dialysis equipment, A4870**Electrodes**, A4556

- automated external defibrillator, K0609

Electrodiagnostic testing, S3905**Electron beam computed tomography**, S8092**Electronic Medical Record (EMR)**

- documented encounter, G8447-G8449

Elevating leg rest, K0195 **Elevator, air pressure, heel**, E0370**Elitek**, J2783**Ellence**, J9178**Elliott's B solution**, J9175**Eloxatin**, J9263**Elspar**, J9020**Emend**, J1453**Emergency transport**

- ALS level 1, A0427
- BLS, A0429
- neonatal, one way, A0225

EMG, E0746**Eminase**, J0350**Empirc antibiotic prescription**

- patient not documented, G8367

Enbrel, J1438**Encounter, clinic**, T1015**End-stage renal disease**

- no documentation
- hematocrit or hemoglobin, G8387
- URR or Kt/V value, G8388

Endarterectomy, chemical, M0300**Endodontic procedures**, D3110-D3999

- periapical services, D3410-D3470
- pulp capping, D3110, D3120
- root canal therapy, D3310-D3353

Endoscope sheath, A4270**Endoskeletal system**, L5810-L5999**Enema, barium**, G0106, G0120, G0122**Enfuvirtide**, J1324**Enlive, enteral nutrition**, B4155**Enovil®**, J1320**Enoxaparin sodium**, J1650**Entera, enteral nutrition**

- isotonic, B4150
- isotonic fiber, B4150
- OPD, B4154

Enteral

- feeding supply kit, gravity, B4036
- pump, B4035
- syringe fed, B4034
- formulae, B4149-B4162
- Amin-Aid, B4154
- Casec, B4155
- Controlyte, B4155
- Criticare HN, B4153
- Enlive®, B4155
- Enrich, B4150
- Ensure, B4150, B4152
- Entera, B4150, B4154

Enteral – continuedformulae – *continued*

- Gerval Protein, B4155
- Hepatic-Aid, B4154
- Isotein, B4153
- Jevity®, B4150, B4152
- Lonalac Powder, B4150
- Magnacal, B4152
- MCT Oil, B4155
- Meritene, B4150
- Microlipids, B4155
- Moducal, B4155
- Nutrifocus™, B4154
- Osmolite®, B4150
- Polycose®, B4155
- Portagen Powder, B4150
- Precision, B4153
- Promix, B4155
- Propac Plus, B4155
- Renu, B4150
- Resurgex, B4155
- Sumacal, B4155
- Sustacal, B4150, B4152
- Sustagen Powder, B4150
- Traumacal, B4154
- Travasorb, B4153, B4154
- Vital HN®, B4153
- Vivonex, B4153, B4154
- gastronomy tube, B4087-B4088
- nutrition infusion pump with alarm, B9002
- without alarm, B9000
- supplies, not otherwise classified, B9998

Enuresis alarm, S8270**Epinephrine**, J0170**Epirubicin HCl**, J9178**Epoetin alpha**, J0886, Q4081

- for non ESRD use, J0885

Epogen, J0885, J0886**Epoprostenol**, J1325

- dilutant, sterile, S0155

Equestrian/hippotherapy (horse), S8940**Ergonovine maleate**, J1330**Ertapenem sodium**, J1335**Erythromycin lactobionate**, J1364**ESRD (End Stage Renal Disease; see also**

- Dialysis)
- machines and accessories, E1500-E1699
- plumbing, A4870
- services, E1510-E1699
- supplies, A4651-A4932

Estra-D, J1000**Estradiol**, J1000, J1060

- cypionate and testosterone cypionate, J1060
- L.A., J1380
- L.A. 20, J1390
- L.A. 40, J0970
- valerate and testosterone enanthate, J0900

Estra-L,

- 20, J1390
- 40, J0970

Estra-Testrin, J0900**Estro-Cyp**, J1000**Estrogen conjugated**, J1410**Estroject L.A.**, J1000**Estrone 5**, J1435**Estrone Aqueous**, J1435**Estronol**, J1435

- L.A., J1000

Ethanolamine oleate, J1430**Ethylol**, J0207**Etidronate disodium**, J1436**Etonogestrel implant system**, J7307**Etopophos**, J9181

- oral, J8560

Etoposide, J9181

- oral, J8560

Euflexxa, J7323**Everone**, J3120, J3130**Examination**

- breast and pelvic, G0101
- digital rectal, G0102, S0605
- foot care for diabetic with LOPS, G0245-G0246
- gynecological, S0610-S0613
- ophthalmological, S0620-S0621, S3000
- oral, D0120-D0160, D0472-D0474
- physical, college, S0622
- pinworm, Q0113

Exercise equipment, A9300, E0935**External**

- ambulatory infusion pump, E0781, E0784
- ambulatory insulin delivery system, A9274
- power, battery components, L7360-L7368
- power, elbow, L7170-L7499
- urinary supplies, A4356-A4358

Extractions, dental, D7250**Extraoral films**, D0250, D0260**Extremity belt/harness**, E0945**EXU-DRY®**

- Buttocks, Face, Neck, Arm, Knee, Dressing, A6253
- Incision Dressings, A6252
- Infant Boot/Foot Dressing, A6253
- Large Burn Jacket, Vest, A6253
- Pad, Non-Permeable, A6253
- Slit Tube Dressings, A6251-A6252
- Wound Dressings, A6251-A6253

Eye

- case, V2756
- lens (spectacle), V2100-V2615
- dispensing, S0595
- pad, A6410-A6411
- patch, A6412
- prosthetic, V2623-V2629
- service (miscellaneous), V2700-V2799

EZBrace LSO, L0631**E-Z Ject lancets**, A4259**E-Z Lets lancet device**, A4258**E-Z Lite Wheelchair**, E1250, K0003**E-Z Max LSO**, L0631**EzPAP® pressure system**, E0484**F****Faceplate, ostomy**, A4361**Face tent, oxygen**, A4619**Factor IX**

- anti-hemophilic factor
- non-recombinant, J7193
- recombinant, J7195
- complex, J7194

Factor VIIa, coagulation factor, recombinant, J7189**Factor VIII, anti-hemophilic factor**, J7190-J7192**Factor IX**, J7193-J7195**Factrel**, J1620**Family planning education**, H1010**Famotidine**, S0028**Faslodex**, J9395**Fee, coordinated care**, G9001-G9011**Fentanyl citrate**, J3010

- and droperidol, J1810

Fern test, Q0114**Feronim**, J1750**Filgrastim (G-CSF)**, J1440, J1441

Filler, wound

- alginate dressing, A6199
- collagen, A6010-A6011, A6024
- foam dressing, A6215
- gel, A6261
- hydrocolloid dressing, A6240-A6241
- hydrogel dressing, A6248
- not elsewhere classified, A6262
- paste, A6261

Film

- radiographic, dental, D0210-D0340
- transparent, A6257- A6259

Finger

- orthosis, L3925, L3927, L3929, L3931

Filter

- aerosol compressor, A7013-A7014
- cap, A7503
- carbon, A4680
- CPAP device, A7038-A7039
- dialysis, carbon, A4680
- holder, A7503, A7507, A7509
- ostomy, A4368
- tracheostoma, A4481, A7504
- ultrasonic generator, A7014

Fistula cannulation set, A4730

Fixation

- percutaneous, skeletal
- pelvic bone/ring, G0413

Flebogamma, J1572

Flexderm®, hydrogel dressing, A6242-A6244

FlexiGel®

- Hydrogel Sheet Dressing, A6242-A6243
- Island Dressing, A6245

Flexoject, J2360

Flexon, J2360

Flexzan®, foam dressing, A6209-A6214

Fliolan, J1325

Flow rate meter, A4614

Flowmeter, E0440, E0555, E0580

Floxuridine, J9200

Fluconazole, injection, J1450

Fludara, J9185

Fludarabine phosphate, J9185

Fluid barrier, dialysis, E1575

Flunisolide, inhalation solution, J7641

Fluocinolone, J7311

Fluoride

- sodium F-18, diagnostic, A9580
- treatment, D1203-D1204

Fluorine-18 flurodeoxyglucose imaging, A9552, S8085

Fluorouracil, J9190

Fluphenazine decanoate, J2680

Flutamide, S0175

Flutter device, S8185

Foam dressing, A6209-A6215

Foam pad, A5126

FoamWalker™, L4360

Folding walker, E0135, E0143-E0144, E0148-E0149

Folex, J9260

- PFS, J9260

Foley catheter, A4311-A4316, A4338-A4346

Follow-up

- inpatient telehealth consultation, G0406-G0408

Follutein, J0725

Fomepizole, J1451

Fomivirsen sodium intraocular, J1452

Fondaparinux sodium, J1652

Foot drop splint, L4398

Foot pressure

- off loading/supportive device, A9283

Footplate, E0175, E0970, K0040-K0042, L3031

Footwear

- evaluation
- documented patient not eligible, G8416
- not performed, G8415
- performed, G8410
- orthopedic, L3201-L3265

Forearm crutches, E0110-E0111

Formoterol

- fumarate, J7606
- inhalation solution, J7640

Fortaz, J0713

Fosaprepitant, J1453

Foscarnet sodium, J1455

Foscavir, J1455

Fosphenytoin, Q2009

- sodium, S0078

Foster care

- adult, S5140-S5141
- child, H0041-H0042, S5145-S5146

Four Poster, fracture frame, E0946

Fracture

- bed pan, E0276
- frame, E0920, E0930, E0946-E0948
- orthosis, L2106-L2136, L3917, L3980-L3984
- orthotic additions, L2180-L2192, L2840-L2850, L3995

Fragmin, J1645

Frames

- glasses, S0516, S0518, V2020, V2025
- sales tax, S9999
- safety, for hospital bed, E0316
- traction, E0840-E0900

Freamine HBC, parenteral nutrition, B5100

Freedom 60 Syringe Infusion System, E0780

Frejka, hip orthosis, L1600

- Replacement cover, L1610

FUDR, J9200

Fulvestrant, J9395

Fungizone, J0285

Furomide MD, J1940

Furosemide, J1940

Fusilev, J0641

G

Gadolinium, A9579

Gadoxetate disodium, C4246

Gait trainer, E8000-E8002

Gallium Ga-67, A9556

- nitrate, J1457

Galsulfase, J1458

Gamastan, J1460-J1560

Gammagard liquid, J1569

Gamma globulin, J1460-J1560

Gammagraft, Q4111

Gammar, J1566, J1567

Gamulin RH, J2788, J2790

Gamunex, J1561

Ganciclovir

- implant, J7310
- sodium, J1570

Garamycin, J1580

Gas system

- compressed, E0424, E0425
- oxygen
- gaseous, E0430, E0431, E0441, E0443
- liquid, E0434-E0440, E0442, E0444

Gastric

- suction pump, E2000

Gastrostomy/jejunostomy tubing, B4087-B4088

Gatifloxacin, J1590

- Gauze, A6216-A6230, A6266**
- impregnated, A6222-A6233, A6266
- nonelastic, A6441
- non-impregnated, A6216-A6221, A6402-A6404

Gefitinib, J8565

Gel

- becaplermin, S0157
- conductive, A4558
- pressure pad, E0185, E0196
- spermicide, A4269

Gemcitabine HCl, J9201

Gemtuzumab ozogamicin, J9300

GemZar, J9201

Generator

- implantable neurostimulator, L8685-L8688
- pulse, ear, E2120
- ultrasonic with aerosol nebulizer, E0574

Genetic testing, S3800-S3855

Gentamicin (sulfate), J1580

Gentran, J7100, J7110

Geodon, J3486

Gingival procedures, D4210-D4240

Glasses

- air conduction, V5070
- binaural, V5120-V5150
- bone conduction, V5080
- frames, V2020, V2025
- hearing aid, V5150, V5190, V5230
- lens, V2100-V2499, V2610, V2718, V2730, V2755, V2770, V2780

Glatiramer acetate, J1595

Glaucoma screening, G0117-G0118

Global fee

- extracorporeal lithotripsy, S0400
- urgent care center, S9083

Gloves, dialysis, A4927, A4930

Glucagon HCl, J1610

Glucose

- monitor, E0607, E2100-E2101, S1030-S1031
- test strips, A4253, A4772

Glukor, J0725

Gluteal pad, L2650

Glycopyrrolate, inhalation solution

- concentrated, J7642
- unit dose, J7643

Gold

- brachytherapy source, C1716
- foil dental restoration, D2410-D2430
- sodium thiomalate, J1600

Gomco

- compact gastro suction drainage pump, E2000
- drain bottle, A4911
- mobile aspirator, E0600

Gonadorelin HCl, J1620

Gonic, J0725

GoodKnight Nasal CPAP System, E0601

Goserelin acetate implant, J9202

Grab bar, trapeze, E0910, E0940

Grade-aid, wheelchair, E0974

Graftjacket, Q4107

Granisetron HCl, J1626, Q0166, S0091

Gravity traction device, E0941

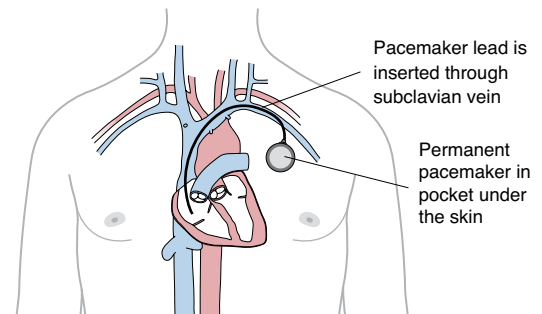
Gravlee jet washer, A4470

Gross and microscopic examination, prostate, G0416-G0419

① C1756	Catheter, pacing, transesophageal Medicare Statute 1833(t)	N N I
① C1757	Catheter, thrombectomy/embolectomy Medicare Statute 1833(t)	N N I
① C1758	Catheter, ureteral Medicare Statute 1833(t)	N N I
① C1759	Catheter, intracardiac echocardiography Medicare Statute 1833(t)	N N I
① C1760	Closure device, vascular (implantable/insertable) Medicare Statute 1833(t)	N N I
① C1762	Connective tissue, human (includes fascia lata) Medicare Statute 1833(t)	N N I
① C1763	Connective tissue, non-human (includes synthetic) Medicare Statute 1833(t)	N N I
① C1764	Event recorder, cardiac (implantable) Medicare Statute 1833(t)	N N I
① C1765	Adhesion barrier Medicare Statute 1833(t)	N N I
① C1766	Introducer/sheath, guiding, intracardiac electrophysiological, steerable, other than peel-away Medicare Statute 1833(t)	N N I
① C1767	Generator, neurostimulator (implantable), non-rechargeable Medicare Statute 1833(t) AHA: 1Q 2007, 8 Pub 100-4, 32, 40-40.5	N N I
① C1768	Graft, vascular Medicare Statute 1833(t)	N N I
① C1769	Guide wire Medicare Statute 1833(t) AHA: 2Q 2007, 7	N N I
① C1770	Imaging coil, magnetic resonance (insertable) Medicare Statute 1833(t)	N N I
① C1771	Repair device, urinary, incontinence, with sling graft Medicare Statute 1833(t) AHA: 2Q 2008, 9	N N I
① C1772	Infusion pump, programmable (implantable) Medicare Statute 1833(t)	N N I
① C1773	Retrieval device, insertable (used to retrieve fractured medical devices) Medicare Statute 1833(t)	N N I
① C1776	Joint device (implantable) Medicare Statute 1833(t)	N N I
① C1777	Lead, cardioverter-defibrillator, endocardial single coil (implantable) Medicare Statute 1833(t) AHA: 2Q 2006, 9	N N I
① C1778	Lead, neurostimulator (implantable) Medicare Statute 1833(t) AHA: 1Q 2007, 8 Pub 100-4, 32, 40-40.5	N N I
① C1779	Lead, pacemaker, transvenous VDD single pass Medicare Statute 1833(t)	N N I
① C1780	Lens, intraocular (new technology) Medicare Statute 1833(t)	N N I
① C1781	Mesh (implantable) Medicare Statute 1833(t)	N N I
① C1782	Morcellator Medicare Statute 1833(t)	N N I
① C1783	Ocular implant, aqueous drainage assist device Medicare Statute 1833(t)	N N I
① C1784	Ocular device, intraoperative, detached retina Medicare Statute 1833(t)	N N I
① C1785	Pacemaker, dual chamber, rate-responsive (implantable) Medicare Statute 1833(t)	N N I

① C1786	Pacemaker, single chamber, rate-responsive (implantable) Medicare Statute 1833(t)	N N I
---------	--	-------

Pacemaker Implantation



① C1787	Patient programmer, neurostimulator Medicare Statute 1833(t)	N N I
① C1788	Port, indwelling (implantable) Medicare Statute 1833(t)	N N I
① C1789	Prosthesis, breast (implantable) Medicare Statute 1833(t)	N N I
① C1813	Prosthesis, penile, inflatable Medicare Statute 1833(t)	N N I
① C1814	Retinal tamponade device, silicone oil Medicare Statute 1833(t) AHA: 2Q 2006, 9	N N I
① C1815	Prosthesis, urinary sphincter (implantable) Medicare Statute 1833(t)	N N I
① C1816	Receiver and/or transmitter, neurostimulator (implantable) Medicare Statute 1833(t)	N N I
① C1817	Septal defect implant system, intracardiac Medicare Statute 1833(t)	N N I
① C1818	Integrated keratoprosthesis Medicare Statute 1833(t)	N N I
① C1819	Surgical tissue localization and excision device (implantable) Medicare Statute 1833(t)	N N I
① C1820	Generator, neurostimulator (implantable), with rechargeable battery and charging system Medicare Statute 1833(t)	N N I
① C1821	Interspinous process distraction device (implantable) Medicare Statute 1833(t)	N J 7
① C1874	Stent, coated/covered, with delivery system Medicare Statute 1833(t) AHA: 3Q 2002, 9	N N I
① C1875	Stent, coated/covered, without delivery system Medicare Statute 1833(t) AHA: 3Q 2002, 9	N N I
① C1876	Stent, non-coated/non-covered, with delivery system Medicare Statute 1833(t) AHA: 3Q 2002, 9	N N I
① C1877	Stent, non-coated/non-covered, without delivery system Medicare Statute 1833(t) AHA: 3Q 2002, 9	N N I
① C1878	Material for vocal cord medialization, synthetic (implantable) Medicare Statute 1833(t)	N N I
① C1880	Vena cava filter Medicare Statute 1833(t)	N N I

C1756 – C1880

- ① E2510 Speech generating device, synthesized speech, permitting multiple methods of message formulation and multiple methods of device access
NCD 50.1 Y
- ① E2511 Speech generating software program, for personal computer or personal digital assistant
NCD 50.1 Y
- ① E2512 Accessory for speech generating device, mounting system
NCD 50.1 Y
- ① E2599 Accessory for speech generating device, not otherwise classified
NCD 50.1 Y

Additional Wheelchair Accessory

- 🛋 E2601 General use wheelchair seat cushion, width less than 22 inches, any depth Y
- 🛋 E2602 General use wheelchair seat cushion, width 22 inches or greater, any depth Y
- 🛋 E2603 Skin protection wheelchair seat cushion, width less than 22 inches, any depth Y
- 🛋 E2604 Skin protection wheelchair seat cushion, width 22 inches or greater, any depth Y
- 🛋 E2605 Positioning wheelchair seat cushion, width less than 22 inches, any depth Y
- 🛋 E2606 Positioning wheelchair seat cushion, width 22 inches or greater, any depth Y
- 🛋 E2607 Skin protection and positioning wheelchair seat cushion, width less than 22 inches, any depth Y
- 🛋 E2608 Skin protection and positioning wheelchair seat cushion, width 22 inches or greater, any depth Y
- 🛋 E2609 Custom fabricated wheelchair seat cushion, any size Y
- 🛋 E2610 Wheelchair seat cushion, powered B
- 🛋 E2611 General use wheelchair back cushion, width less than 22 inches, any height, including any type mounting hardware Y
- 🛋 E2612 General use wheelchair back cushion, width 22 inches or greater, any height, including any type mounting hardware Y
- 🛋 E2613 Positioning wheelchair back cushion, posterior, width less than 22 inches, any height, including any type mounting hardware Y
- 🛋 E2614 Positioning wheelchair back cushion, posterior, width 22 inches or greater, any height, including any type mounting hardware Y
- 🛋 E2615 Positioning wheelchair back cushion, posterior-lateral, width less than 22 inches, any height, including any type mounting hardware Y
- 🛋 E2616 Positioning wheelchair back cushion, posterior-lateral, width 22 inches or greater, any height, including any type mounting hardware Y
- 🛋 E2617 Custom fabricated wheelchair back cushion, any size, including any type mounting hardware Y
- 🛋 E2619 Replacement cover for wheelchair seat cushion or back cushion, each Y
- 🛋 E2620 Positioning wheelchair back cushion, planar back with lateral supports, width less than 22 inches, any height, including any type mounting hardware Y
- 🛋 E2621 Positioning wheelchair back cushion, planar back with lateral supports, width 22 inches or greater, any height, including any type mounting hardware Y

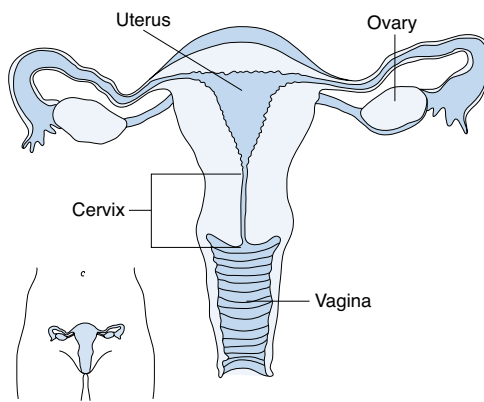
Gait Trainer

- ⊖ E8000 Gait trainer, pediatric size, posterior support, includes all accessories and components E
- ⊖ E8001 Gait trainer, pediatric size, upright support, includes all accessories and components E
- ⊖ E8002 Gait trainer, pediatric size, anterior support, includes all accessories and components E

Procedures/Professional Services G0008–G9140

- 🛋 G0008 Administration of influenza virus vaccine
Pub 100-4, 18, 10-10.5 S
- 🛋 G0009 Administration of pneumococcal vaccine
Pub 100-4, 18, 10-10.5 S
- 🛋 G0010 Administration of hepatitis B vaccine
Pub 100-4, 18, 10-10.5 B
- 🛋 G0027 Semen analysis; presence and/or motility of sperm excluding Huhner ♂ A
- ① G0101 Cervical or vaginal cancer screening; pelvic and clinical breast examination ♀ Y PQR

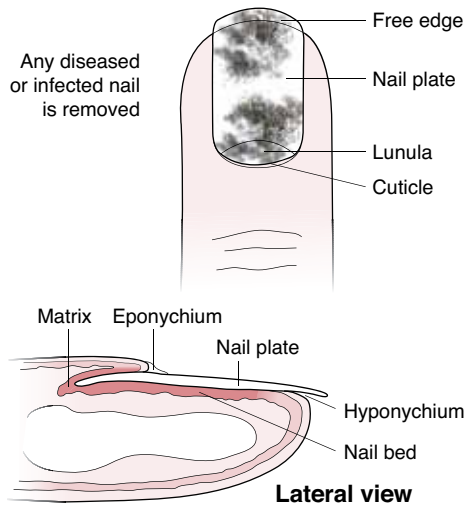
Cervical or vaginal cancer screening



- ① G0102 Prostate cancer screening; digital rectal examination
NCD 210.1; Pub 100-4, 18, 50-50.8 ♂ A N
- ① G0103 Prostate cancer screening; prostate specific antigen test (PSA)
NCD 210.1; Pub 100-4, 18, 50-50.8 ♂ A
- ① G0104 Colorectal cancer screening; flexible sigmoidoscopy S P 3
Pub 100-4, 18, 60-60.8
- ① G0105 Colorectal cancer screening; colonoscopy on individual at high risk T A 2
Pub 100-4, 18, 60-60.8
- ① G0106 Colorectal cancer screening; alternative to G0104, screening sigmoidoscopy, barium enema S
Pub 100-4, 18, 60-60.8
- 🛋 G0108 Diabetes outpatient self-management training services, individual, per 30 minutes A PQR
Pub 100-4, 18, 120-120.2.2
- 🛋 G0109 Diabetes outpatient self-management training services, group session (2 or more), per 30 minutes A PQR
- 🛋 G0117 Glaucoma screening for high risk patients furnished by an optometrist or ophthalmologist S
AHA: 3Q 2001, 12
Pub 100-4, 18, 70-70.5
- 🛋 G0118 Glaucoma screening for high risk patient furnished under the direct supervision of an optometrist or ophthalmologist S
AHA: 3Q 2001, 12
- ① G0120 Colorectal cancer screening; alternative to G0105, screening colonoscopy, barium enema S
Pub 100-4, 18, 60-60.8
- ① G0121 Colorectal cancer screening; colonoscopy on individual not meeting criteria for high risk T A 2
Pub 100-4, 18, 60-60.8
- ⊖ G0122 Colorectal cancer screening; barium enema E
Pub 100-4, 18, 60-60.8

- ① G0123 Screening cytopathology, cervical or vaginal (any reporting system), collected in preservative fluid, automated thin layer preparation, screening by cytotechnologist under physician supervision ♀ A NCD 190.2
- ① G0124 Screening cytopathology, cervical or vaginal (any reporting system), collected in preservative fluid, automated thin layer preparation, requiring interpretation by physician ♀ B NCD 190.2; Pub 100-4, 18, 30-30.9
- ① G0127 Trimming of dystrophic nails, any number T P 3 Pub 100-2, 15, 290; 100-2, 15, 290

Trimming of dystrophic nails



- ① G0128 Direct (face-to-face with patient) skilled nursing services of a registered nurse provided in a comprehensive outpatient rehabilitation facility, each 10 minutes beyond the first 5 minutes B Medicare Statute 1833(a)
- 🏠 G0129 Occupational therapy services requiring the skills of a qualified occupational therapist, furnished as a component of a partial hospitalization treatment program, per session (45 minutes or more) P
- ① G0130 Single energy x-ray absorptiometry (SEXA) bone density study, one or more sites; appendicular skeleton (peripheral) (e.g., radius, wrist, heel) X Z 3 NCD 150.3
- 🏠 G0141 Screening cytopathology smears, cervical or vaginal, performed by automated system, with manual rescreening, requiring interpretation by physician ♀ B Pub 100-4, 18, 30-30.9
- 🏠 G0143 Screening cytopathology, cervical or vaginal (any reporting system), collected in preservative fluid, automated thin layer preparation, with manual screening and rescreening by cytotechnologist under physician supervision ♀ A Pub 100-4, 18, 30-30.9
- 🏠 G0144 Screening cytopathology, cervical or vaginal (any reporting system), collected in preservative fluid, automated thin layer preparation, with screening by automated system, under physician supervision ♀ A Pub 100-4, 18, 30-30.9
- 🏠 G0145 Screening cytopathology, cervical or vaginal (any reporting system), collected in preservative fluid, automated thin layer preparation, with screening by automated system and manual rescreening under physician supervision ♀ A Pub 100-4, 18, 30-30.9
- 🏠 G0147 Screening cytopathology smears, cervical or vaginal, performed by automated system under physician supervision ♀ A Pub 100-4, 18, 30-30.9

- 🏠 G0148 Screening cytopathology smears, cervical or vaginal, performed by automated system with manual rescreening ♀ A Pub 100-4, 18, 30-30.9
- 🏠 G0151 Services of physical therapist in home health setting, each 15 minutes B
- 🏠 G0152 Services of occupational therapist in home health setting, each 15 minutes B
- 🏠 G0153 Services of speech and language pathologist in home health setting, each 15 minutes B
- 🏠 G0154 Services of skilled nurse in home health setting, each 15 minutes B
- 🏠 G0155 Services of clinical social worker in home health setting, each 15 minutes B
- 🏠 G0156 Services of home health aide in home health setting, each 15 minutes B
- ① G0166 External counterpulsation, per treatment session T NCD 20.20; Pub 100-4, 32, 130-130.2
- 🏠 G0168 Wound closure utilizing tissue adhesive(s) only AHA: 1Q 2005, 5; 4Q 2001, 12; 3Q 2001, 13 B
- ① G0173 Linear accelerator based stereotactic radiosurgery, complete course of therapy in one session S Z 2
- 🏠 G0175 Scheduled interdisciplinary team conference (minimum of three exclusive of patient care nursing staff) with patient present V
- ① G0176 Activity therapy, such as music, dance, art or play therapies not for recreation, related to the care and treatment of patient's disabling mental health problems, per session (45 minutes or more) P
- ① G0177 Training and educational services related to the care and treatment of patient's disabling mental health problems per session (45 minutes or more) P
- 🏠 G0179 Physician re-certification for Medicare-covered home health services under a home health plan of care (patient not present), including contacts with home health agency and review of reports of patient status required by physicians to affirm the initial implementation of the plan of care that meets patient's needs, per re-certification period M
- 🏠 G0180 Physician certification for Medicare-covered home health services under a home health plan of care (patient not present), including contacts with home health agency and review of reports of patient status required by physicians to affirm the initial implementation of the plan of care that meets patient's needs, per certification period M
- 🏠 G0181 Physician supervision of a patient receiving Medicare-covered services provided by a participating home health agency (patient not present) requiring complex and multidisciplinary care modalities involving regular physician development and/or revision of care plans, review of subsequent reports of patient status, review of laboratory and other studies, communication (including telephone calls) with other health care professionals involved in the patient's care, integration of new information into the medical treatment plan and/or adjustment of medical therapy, within a calendar month, 30 minutes or more M
- 🏠 G0182 Physician supervision of a patient under a Medicare-approved hospice (patient not present) requiring complex and multidisciplinary care modalities involving regular physician development and/or revision of care plans, review of subsequent reports of patient status, review of laboratory and other studies, communication (including telephone calls) with other health care professionals involved in the patient's care, integration of new information into the medical treatment plan and/or adjustment of medical therapy, within a calendar month, 30 minutes or more M
- 🏠 G0186 Destruction of localized lesion of choroid (for example, choroidal neovascularization); photocoagulation, feeder vessel technique (one or more sessions) T R 2
- 🏠 G0202 Screening mammography, producing direct digital image, bilateral, all views Pub 100-4, 18, 20-20.8.2