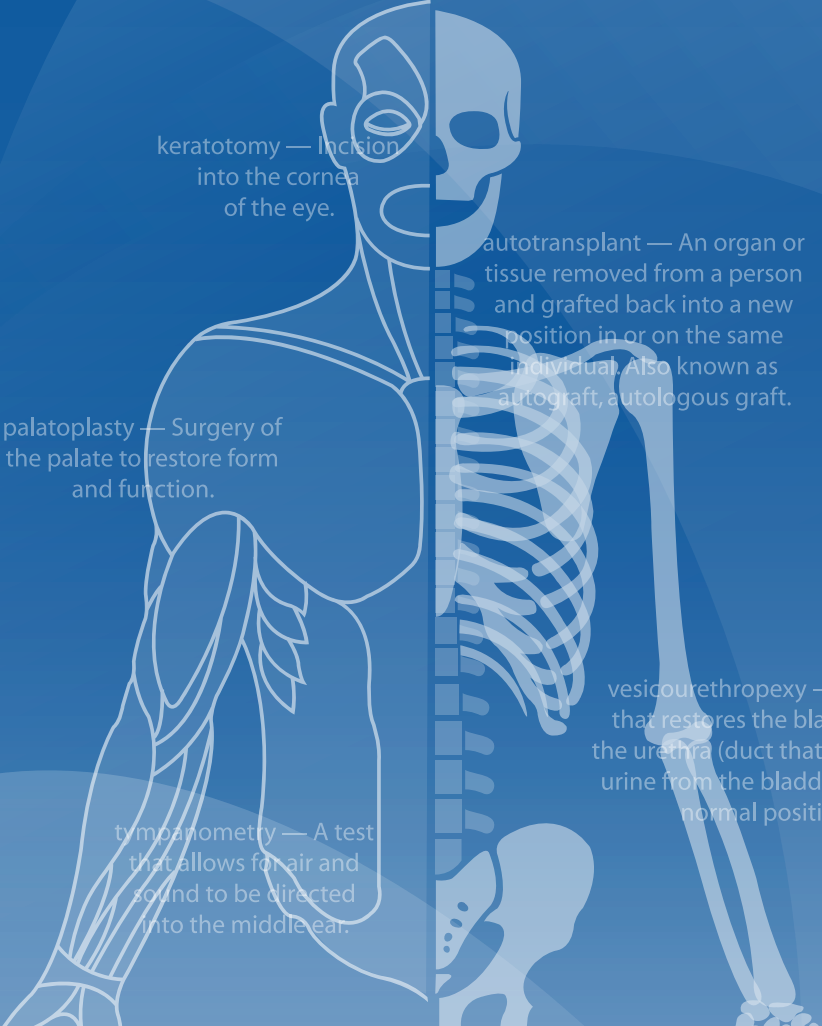


Plain English Descriptions for Coding Terms



keratotomy — Incision into the cornea of the eye.

palatoplasty — Surgery of the palate to restore form and function.

tympanometry — A test that allows for air and sound to be directed into the middle ear.

autotransplant — An organ or tissue removed from a person and grafted back into a new position in or on the same individual. Also known as autograft, autologous graft.

vesicourethropexy — Surgery that restores the bladder and the urethra (duct that discharges urine from the bladder) to their normal position.

Acronyms/Abbreviations/ Root Words/Prefixes/Suffixes

A majority of medical terms are composed of Greek and Latin word parts and are broken down into different elements. One element is the root word. The root word is the foundation of the medical term and contains the fundamental meaning of the word. All medical terms have one or more roots.

Examples:

hydr = water
lith = stone
path = disease

Combining forms (or vowel, usually “o”) links the root word to the suffix or to another root word. This combining vowel does not have a meaning on its own; it only joins one part of a word to another.

Prefixes and suffixes are two of the other elements used in medical terminology and consist of one or more syllables (prepositions or adverbs) placed before or after root words to show various kinds of relationships. Prefixes are before the root word and suffixes are after the root word and consist of one or more letters grouped together. They are never used independently; however, they can modify the meaning of the other word parts. Many prefixes and suffixes are added to other words with a hyphen, but medical dictionary publishers are opting to drop the hyphen on many of the more common prefixed medical words.

Examples:

Prefixes:

micro = small
peri = surrounding

Suffixes:

algia = pain
an = pertaining to

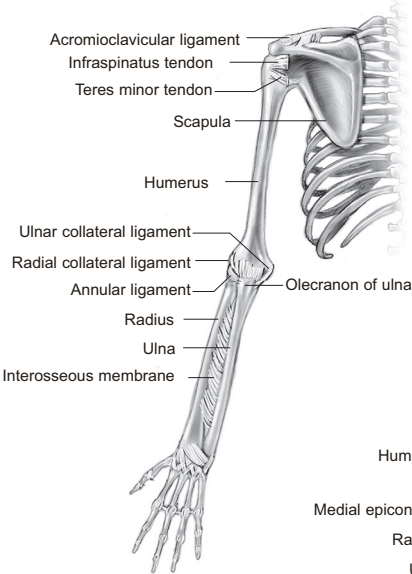
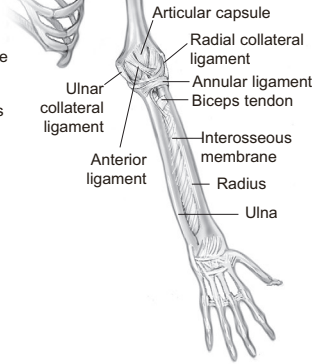
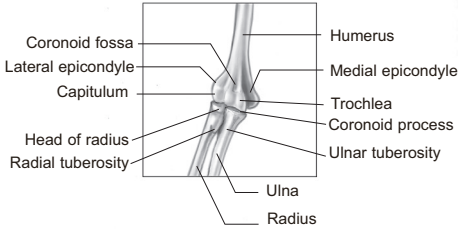
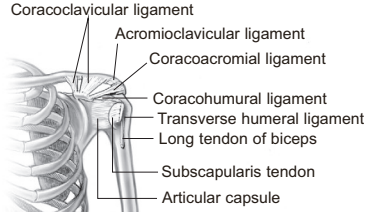
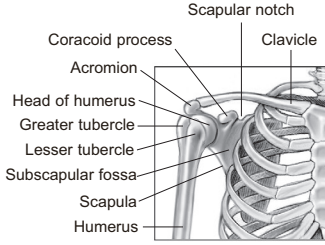
The following are lists of prefixes and suffixes typically seen in coding:

Root Words/Combining Forms

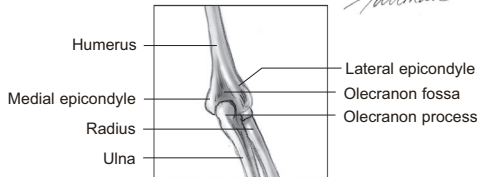
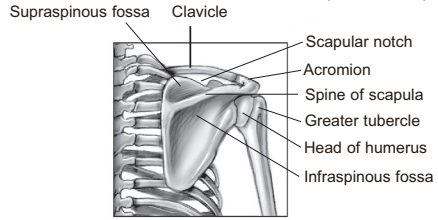
abdomin/o	abdomen
acous/o	hearing
acr/o	extremities, top, extreme point
aden/o	gland
adip/o	fat
andr/o	male
ankyl/o	stiff, bent, crooked
anter/o	front
arthr/o	joint
ather/o	yellowish, fatty plaque
audi/o	hearing
aur/o	ear
aut/o	self
axill/o	armpit
balan/o	glans penis
bi/o	life
blast/o	developing cell
blephr/o	eyelid
brach/o	arm
bronch/o	bronchial tubes
carcin/o	cancer
card/o	heart
cheil/o	lip
chol/o	gall, bile
cholangi/o	bile duct
chondr/o	cartilage
cis/o	to cut
colp/o	vagina
coron/o	heart
cost/o	ribs
crani/o	skull
cry/o	cold
cutane/o	skin
cyan/o	blue
cyt/o	cell

Shoulder and Elbow

(Anterior View)



(Posterior View)



© Fairman Studios, LLC, 2002. All Rights Reserved.

alpha-fetoprotein (AFP) A protein normally produced by a fetus. AFP levels are usually undetectable in the blood of healthy adult men or women (who are not pregnant). An elevated level of AFP suggests the presence of either a primary liver cancer or germ cell tumor.

Alphanate Drug used to form clots to stop bleeding. Used to temporarily prevent or control bleeding episodes in patients with hemophilia A.

HCPCS II J7190

AlphaNine SD Drug used to prevent or control bleeding episodes in persons with low factor levels. Also used to reverse the effects of warfarin blood thinner.

HCPCS II J7193-J7195

Alport's syndrome A hereditary condition characterized by kidney disease, sensorineural hearing loss, and some difficulties with eye defects.

ICD-9-CM Dx 759.89

alprostadil Drug used in the temporary treatment of men with erectile dysfunction.

HCPCS II J0270

alprostadil, urethral suppository Drug used to treat male impotence.

HCPCS II J0275

alteplase recombinant Drug used to dissolve blood clots that may form within patient's IV lines.

HCPCS II J2997

Alupent Drug used to treat the symptoms of asthma, bronchitis, emphysema and other lung diseases.

HCPCS II J7667, J7668, J7669, J7670

alveolar Pertaining to the air sacs of the lungs.

alveolar macrophage (AM) A cell in in the lungs which engulfs bacteria and foreign material and produces enzymes to digest them and protect the lung from invasion.

alveolar process The ridge on the surface of the upper and lower jaw containing the tooth sockets.

alveolectomy Surgical removal of a portion of the alveolar process (containing tooth sockets) to facilitate the fitting of a dental prosthesis.

CPT 41830

alveoli Air sacs in the lungs where oxygen and carbon dioxide are exchanged to and from the bloodstream.

alveoplasty Surgical preparation of the tooth sockets for the reception of dentures.

CPT 41874

Alzheimer's disease A neurological disorder causing a gradual loss of brain function, resulting in progressive behavioral changes, and the loss of memory and cognitive function; the most common type of dementia.

ICD-9-CM Dx 331.0

amastia Congenital absence of one or both breasts. Also known as amazia.

ICD-9-CM Dx 611.8

ambisexual Containing sexual characteristics, or structure, found in both sexes.

ICD-9-CM Dx 752.7

AmBisome Used to help the body overcome serious infections caused by fungus or protozoa.

HCPCS II J0289

amblyopia Condition which occurs when one of the eyes appears healthy and normal yet produces poor or blurred vision. Also known as lazy eye.

ICD-9-CM Dx 300.11, 368.00-368.03, 368.55-368.60, 377.34

amblyopia exanopsia A loss of visual function resulting from long disuse.

ICD-9-CM Dx 368

Amcort Drug used to treat incapacitating allergic disorders intractable to adequate trials of conventional treatment.

HCPCS II J3302

amebiasis Infection by a disease-causing ameba.

ICD-9-CM Dx 006, 007.8

amelanotic melanoma A type of skin cancer in which the cells do not make melanin. Skin lesions are often irregular and may be pink, red, or have light brown, tan, or gray at the edges.

ICD-9-CM Dx 172.0-172.9

Amen Drug used to promote menstruation when women do not begin naturally to menstruate at puberty or if they stop menstruating before menopause.

HCPCS II J1051, J1055

amenorrhea Abnormal suppression or absence of menstruation.

ICD-9-CM Dx 256.8, 626.0

CNS prophylaxis Chemotherapy or radiation therapy given to the central nervous system (CNS) as a preventive treatment. It is given to kill cancer cells that may be in the brain and spinal cord, even though no cancer has been detected there

CPT 61517, 96450

CNS Region Specified level of central nervous system involvement where injury, disease, or its effects are located, and include the brainstem, cervical, thoracic, or lumbosacral spinal cord areas.

CNS tumors Tumors of the central nervous system, including brain stem glioma, craniopharyngioma, medulloblastoma, and meningioma.

ICD-9-CM Dx 191.7, 194.0, 194.3

co-morbid Two or more disease conditions that occur simultaneously within the same person. A diagnosis of chronic fatigue syndrome (CFS) requires that certain other conditions that may also cause fatigue, such as cancer, are not present.

co-surgery Two separate medical professionals performing a distinct part of a procedure.

coactivated T cells T cells that have been coated with monoclonal antibodies to enhance their ability to kill tumor cells.

coagulation The process of clotting.

coagulopathy Any disorder of blood coagulation (blood clotting).

ICD-9-CM Dx 286.6, 286.9, 776.2

coal workers' pneumoconiosis A lung disease caused by deposition of coal dust in the lungs, usually characterized by centrilobular emphysema (retention of air affecting the elasticity of the bronchioles).

ICD-9-CM Dx 500

coarctation Narrowing or stricture of the aorta or of a blood vessel.

ICD-9-CM Dx 747.10, 747.3

cobalt chrome A term that is used in referring to cobalt-chromium-molybdenum alloy, a mixture of metals, used in many surgical implants.

Cobex Drug used to treat pernicious anemia, nutritional vitamin B12 deficiency, malabsorption of vitamin B12 and any other B12 deficiency.

HCPCS II J3420

coccidioidomycosis A fungal disease which results from infection with *Coccidioides immitis*.

Coccidioidomycosis or valley fever is common only in a limited geographic area.

ICD-9-CM Dx 114.0-114.9

coccydynia Pain around the coccyx. Often caused by local trauma, but may also be a referred pain syndrome from the lumbar spine.

ICD-9-CM Dx 724.79

coccygeal sinuses Cavity or channel just over or close to the tip of the coccyx.

coccyx The small, triangular bone at the base of the spinal column formed by the fusion of four rudimentary (imperfected developed) vertebra. Also known as the tail bone.

cochlea The winding tubular cavity within the inner ear, shaped like a snail-shell, which contains the organ of Corti, the end-organ of hearing. It changes the pressure waves of sound into nerve impulses.

cochlear implant An electronic device designed to stimulate the hearing mechanism. It utilizes a coil of wire embedded under the skin behind the ear with an extension of wire into the fluid of the inner ear (cochlea).

HCPCS II L8614, L8619

cochlear nerve The eighth cranial (acoustic) nerve that arises in the cochlea and conveys sound stimuli to the brain.

cochlear otosclerosis A disease that causes the tiny filaments in the cochlea that transmits sound to harden, causing hearing loss.

ICD-9-CM Dx 387.2

codeine phosphate Used to treat mild to moderate pain.

HCPCS II J0745

Codimal-A Temporarily relieving runny nose, watery eyes, sneezing and itchy nose, eyes, and associated with hay fever or other allergies.

HCPCS II J0945

codon A sequence of three bases that specifies a particular amino acid; a building block of the cell's genetic material, DNA and RNA.

Haldol A drug used to manage nervous, emotional, and mental disorders, such as mania, schizophrenia, psychosis, and psychomotor agitation and to control Tourette's disorder symptoms. Also called haloperidol.

HCPCS II J1630

half life The amount of time required for half of a given substance to be eliminated from the body.

half-value layer The thickness of any material required to reduce the intensity of an x-ray or gamma-ray beam to one-half its original value.

hallucinations False sensory experiences that may be visual or auditory, such as seeing a person when nobody is there, or hearing a voice with no one there speaking,

ICD-9-CM Dx 291.3, 292.12, 368.16, 780.1

hallucinogens Psychedelic (mind-manifesting) drugs that distort perceptions and produce non-existent sensory images when there are no sensory stimuli to produce them.

hallux Refers to the big toe.

hallux dolorosus A painful condition of the great toe, usually associated with flatfoot.

hallux malleus Hammer toe affecting the great toe.

ICD-9-CM Dx 735.3

hallux rigidus A painful flexion deformity of the great toe with limitation of motion at the metatarsophalangeal joint. Also known as stiff toe.

ICD-9-CM Dx 268.1, 735.2, 755.66

hallux valgus A foot deformity in which the large toe turns inward, creating a bunion.

ICD-9-CM Dx 735.0, 755.6

hallux varus Angulation of the great toe away from the other toes.

ICD-9-CM Dx 735.1, 755.66

halo 1) A luminous or colored circle, such as is seen around a light in glaucoma. 2) A ring seen around the macula lutea, the yellowish area near the center of the retina, in ophthalmoscopic examinations. 3) The imprint of the ciliary processes on the vitreous body. 4) A metal or plastic band that encircles the head or neck, providing support and stability to an orthotic apparatus used to support, align, prevent, or correct deformities.

haloperidol A drug used to manage nervous, emotional, and mental disorders, such as mania, schizophrenia, psychosis, psychomotor agitation, and to control Tourette's disorder symptoms. Also called Haldol.

HCPCS II J1630

haloperidol decanoate A drug used to manage nervous, emotional, and mental disorders, such as mania, schizophrenia, psychosis, psychomotor agitation, and to control Tourette's disorder symptoms. Also known as Haldol decanoate.

HCPCS II J1631

Halsted radical mastectomy Surgery for breast cancer in which the breast, chest muscles, and all of the lymph nodes under the arm are removed. Used only when the tumor has spread to the chest muscles.

CPT 19200-19220, 19303-19306

hamartoma A benign tumorlike malformation resulting from faulty development in an organ, and composed of an abnormal mixture of mature cells and tissue elements of the affected part, growing in a disorganized manner.

ICD-9-CM Dx 213.0, 213.1, 757.32, 759.6

hammer toe A toe that is chronically curled downward as the result of an imbalance of the muscle structures of the toes, causing the toes become crooked, bent, or buckle under with the joints protruding.

ICD-9-CM Dx 268.1, 726.91, 735.4, 755.66

hamstrings Muscles located in the posterior compartment of the thigh, made up of the semitendinosus, semimembranosus, and biceps femoris muscles, sometimes included is the hamstring head of the adductor magnus.

hangman's fracture Fracture through the pedicles of the axis (C2 vertebra) with or without subluxation (dislocation) of the second or third cervical vertebra.

haptometer Instrument for measuring sensitivity to touch.

hard palate The bony portion of the roof of the mouth which separates the mouth from the nose.

Harrington rod Medical device applied surgically to treat curvature of the spine (scoliosis). The device is a stainless steel rod fitted with hooks at both ends and a ratchet, implanted through a posterior spinal approach, securing the hooks onto the vertebral laminae.

laronidase Used in the treatment of mucopolysaccharidosis.

HCPCS II J1931

laryngeal atresia Congenital lack of a normal opening in the voicebox.

ICD-9-CM Dx 748.3

laryngeal cancer, stage I Cancer is still in the area of the larynx where it started.

ICD-9-CM Dx 161.0-161.9

laryngeal cancer, stage II In only the larynx, but can be found in the supraglottis, or upper part of the larynx above the vocal cords; in the glottis, or middle part of larynx, or in the subglottis.

ICD-9-CM Dx 161.0-161.9

laryngeal cancer, stage III The cancer is on the larynx and may affect the vocal chords or the lymph nodes in the area.

ICD-9-CM Dx 161.0-161.9

laryngeal cancer, stage IV The cancer has spread to tissues around the larynx, such as the pharynx or the tissues in the neck, or the cancer has spread to more than one lymph node on the same side of the neck.

ICD-9-CM Dx 161.0-161.9

laryngeal neoplasms Abnormal growths in the voice box that can be cancerous or noncancerous.

ICD-9-CM Dx 161.0-161.9, 212.1

laryngeal nodules Noncancerous, callous-like growths on the inner parts of the vocal cords.

ICD-9-CM Dx 478.79

laryngeal paralysis Loss of function or feeling of one or both of the vocal folds.

ICD-9-CM Dx 478.30

laryngectomy Surgery to remove part or all of the larynx, or voice box.

CPT 31360-31382

laryngitis Hoarseness or complete loss of the voice because of irritation or inflammation of the vocal cords.

There are too many ICD-9-CM codes to list. Refer to the ICD-9-CM book for appropriate diagnosis(es).

laryngocele An air sac connected to the voicebox through the ventricle, often bulging outward into the tissue of the neck, especially during coughing.

ICD-9-CM Dx 748.3

laryngofissure Surgical opening in the voicebox usually made through the midline of the thyroid cartilage.

CPT 31300

laryngography Radiography of the voice box.

CPT 70373

laryngoplasty Repairing or plastic surgery of the larynx (voice box).

CPT 31580, 31582, 31584, 31587, 31588

laryngoscope A thin, lighted catheter instrument used to view the larynx, or voice box.

laryngotomy Incision into the voice box.

CPT 31300, 31320

laryngotracheitis Inflammation of the larynx (voicebox) and the trachea (windpipe).

lasegue sign Pain in the back of the leg on flexing a patient's hip and knee and then extending the knee while the hip is flexed, resulting from dural irritation, usually by a prolapsed disc.

laser ablation The process of removing tissue by irradiating it with a laser beam.

laser beam Light amplification by stimulated emission of radiation. A strong, controlled beam of coherent light powerful enough to cut, destroy, fuse, or vaporize body tissues. Laser beams can be precisely focused for use in delicate operations such as eye surgery.

laser therapy Use of low-powered lasers for the treatment of pain, swelling, inflammation, and for the promotion of healing.

LASIK A surgical procedure in which the surface of the cornea is reshaped with a laser beam to correct poor eyesight.

CPT 65760

Lasix A medication that reduces swelling and fluid retention in patients with hypertension or edema caused by conditions such as congestive heart failure, kidney disorders, or liver disease by causing the kidneys to rid the body of excess salt and water. Also called furosemide.

HCPCS II J1940

latent allergy A positive allergy identified from testing but without clinical allergy symptoms developed.

latent content The underlying, more hidden, but true meaning of a dream.

tetracycline An antibiotic used to kill infections of the skin, bone, stomach, respiratory tract, sinuses, ear and urinary tract as well as some sexually transmitted diseases.

HCPCS II J0120

tetralogy of Fallot A congenital heart defect consisting of a ventricular septal defect, pulmonic stenosis, overriding aorta, and right ventricular hypertrophy.

ICD-9-CM Dx 745.2

thalassemia Any of a group of inherited forms of anemia occurring chiefly among people of Mediterranean descent, caused by faulty synthesis of part of the hemoglobin (iron-containing pigment in red blood cells) molecule. Also known as Mediterranean anemia.

ICD-9-CM Dx 282.41, 282.42, 282.49

thalidomide A teratogenic drug belonging to the angiogenesis inhibitors used to prevent the growth of new blood vessels into a solid tumor.

thallium stress test An x-ray study that follows the path of radioactive potassium carried by the blood into heart muscle. Damaged or dead muscles can be defined, as can the extent of narrowing in an artery.

thallous chloride (TI-201) Drug used in myocardial perfusion imaging and exercise testing.

HCPCS II A9505

theelin aqueous Drug used to treat genital skin conditions, and inflammation of the vagina and urethra.

HCPCS II J1435

thelitis Inflammation of a nipple.

ICD-9-CM Dx 611.0, 675.0x

thenar muscle The body of muscle on the palm of the human hand just beneath the thumb.

theophylline Drug used in the treatment of asthma, chronic bronchitis, and emphysema.

HCPCS II J2810

theophylline ethylenediamine Drug used to relax bronchial smooth muscle and pulmonary blood vessels; it stimulates central respiratory drive and increases diaphragmatic contractility.

HCPCS II J0280

TheraCys Drug used as a solution run into the bladder to treat cancer and used as a vaccine to prevent tuberculosis.

HCPCS II J9031

therapeutic abortion Termination of a pregnancy due to severe abnormalities in the fetus or in cases where the mother's physical or mental health is at risk.

therapeutic community A term of British origin, now widely used, for a specially structured mental hospital environment that encourages patients to function within the range of social norms.

therapeutic device Physical structure with or without movable parts that is intended to serve as a therapeutic intervention providing a treatment effect.

therapeutic window A well-defined range of blood levels that demonstrate an optimal clinical response to a drug. Levels above or below the window are associated with a poor response and may indicate a potentially dangerous condition.

therapy Treatment of a disease or disorder by means of a curative process.

TheraSkin A cryopreserved human skin allograft that contains both dermis and epidermis and is biological active, containing a supply of growth factors, cytokines, and collagen that promote wound healing and a natural barrier against infection.

HCPCS II Q4121

thermal ablation A procedure using heat to remove tissue or destroy its function.

thermalgesia Extreme sensitivity to warmth or heat.

ICD-9-CM Dx 782.0

thermogram A regional temperature map of the surface of a part of the body made by a thermograph (instrument that records temperature).

CPT 93760, 93762

thermolabile Easily affected by heat.

thermoplegia Sunstroke.

ICD-9-CM Dx 992.0

thermoreceptor afferents The peripheral afferent fibers which respond to caloric stimulation (i.e. heat or cold stimuli). Some C fibers encode increases in heat while some A-delta and C fibers encode temperature decreases.

thermotherapy Medical therapy involving the application of heat.

CPT 53850-53853

ureterostomy Surgical establishment of an external opening into the ureter (duct that carries urine from the kidney to the bladder).

CPT 50684, 50686, 50860, 50951

ureterotomy Incision of the ureter (duct that carries urine from the kidney to the bladder).

CPT 50600, 50605

ureteroureterostomy The establishment of an anastomosis (joining of parts) between two ureters (duct that carries from the kidney to the bladder) or between two segments of the same ureter.

CPT 50760-50770, 50830

ureterovisceral Pertaining to the ureter and intestines.

urethral diverticulum A sac-like outpouching of the urethral (the duct that discharges urine from the bladder) wall, either from a congenital defect, or from chronic penetrating inflammation.

ICD-9-CM Dx 599.2, 753.8

urethral balloon dilation A treatment for benign prostatic hyperplasia or prostate enlargement in which a tiny balloon is inflated via a catheter inside the urethra to make it wider for unobstructed urine can pass from the bladder.

CPT 53600

urethral caruncle Deep red growth on the mucous membrane of the urinary meatus (opening or passage) in women.

ICD-9-CM Dx 599.3

urethral obstruction A blockage in the urethra, with kidney stone being the most common cause.

urethral pressure profile A test that measures pressures along the length of the urethra.

CPT 51727, 51729

urethral pressure static Refers to measurement of pressure at a single point in the urethra.

urethrectomy Excision of a part or all of the urethra (duct in which urine is discharged).

CPT 53210, 53215

urethritis Inflammation of the urethra (duct that discharges urine from the bladder).

urethrocele A condition in which the urethra prolapses into the vagina.

ICD-9-CM Dx 599.5, 618.03, 618.2-618.4

urethrocytography Radiographic examination of the urethra (tube that takes discharges urine from the bladder) and bladder by filling of the bladder during retrograde urethrography (examination of urethra by retrograde injection of contrast medium).

CPT 51600, 51605, 51610, 74450-74455

urethrocytoscopy A test that detects structural abnormalities, inflammation of the bladder wall, or masses that might not show up on a x-ray. A thin cystoscope instrument is inserted through the urethra (the duct that discharges urine) into the bladder.

urethromeatoplasty Minor surgical procedure to enlarge the size of the hole of the tip of the penis.

CPT 53450-53460

urethropexy A surgical procedure performed to reinforce the bladder neck to prevent urine leakage.

There are too many CPT codes to list. Refer to the CPT book for appropriate codes.

urethroplasty A surgical procedure performed to repair the lower portion of the bladder and the upper portion of the urethra.

There are too many CPT codes to list. Refer to the CPT book for appropriate codes.

urethrorrhaphy Suture of the urethra (duct that discharges urine from the bladder).

CPT 53502-53515

urethrorrhea An abnormal discharge from the urethra (duct that discharges urine from the bladder).

ICD-9-CM Dx 788.7

urethroostomy Surgical formation of a permanent opening of the urethra (duct in which urine is discharged).

CPT 53000-53010

urethrotomy Surgical incision of the urethra (duct in which urine is discharged).

CPT 53000-53010

urethrovaginal Pertaining to both the urethra and the vagina, or the space between the two structures.

urethrovaginal septal fibrosis Fibrosis tissue that grows in the space between the urethra and vagina.

urge incontinence The inability to hold urine.

ICD-9-CM Dx 788.31